

MILTON, FLORIDA

# COPTER TACAN 004

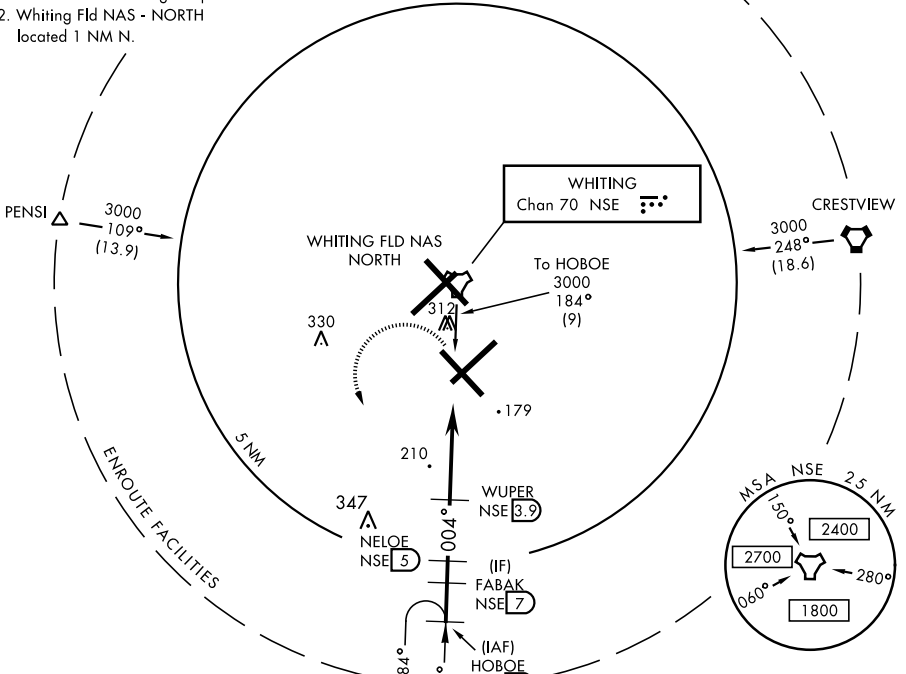
TACAN NSE Chan <b>70</b>	APCH CRS <b>004°</b>	Rwy ldg TDZE Arprt Elev <b>5996 N/A 178</b>	AL-1909 [USN]	WHITING FLD NAS - SOUTH (KNDZ)
-----------------------------	-------------------------	---	---------------	--------------------------------

Maximum airspeed 90 KIAS.

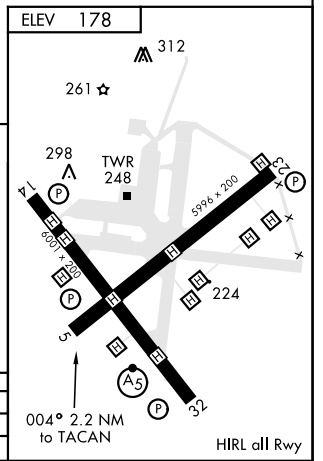
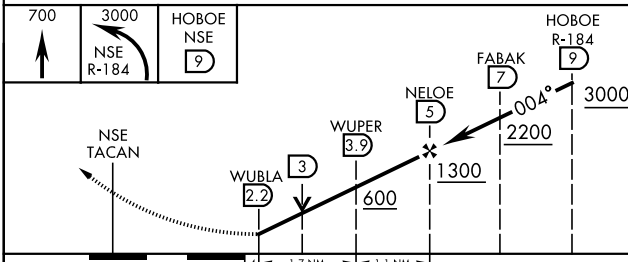
MISSED APPROACH: Climb to 700. Then climbing left turn to 3000. Intercept NSE TACAN R-184 to HOBEO and hold. Contact Pensacola Approach Control.

ATIS ★ <b>273.575</b>	PENSACOLA APP CON <b>124.85 385.4</b>	SOUTH WHITING TOWER ★ <b>121.4 348.675</b>	GND CON <b>317.65</b>	CLNC DEL <b>355.6</b>	ASR/PAR
--------------------------	--	---	--------------------------	--------------------------	---------

- CAUTION:
1. Intensive VFR training all quadrants.
  2. Whiting Fld NAS - NORTH located 1 NM N.



EMERG SAFE ALT 100 NM 3500



CATEGORY	COPTER	
H-004	600-½	422 (500-½)
CIRCLING	NOT AUTHORIZED	

MILTON, FLORIDA 30°42'N-87°01'W WHITING FLD NAS - SOUTH (KNDZ)

Amdt 5 04JAN18

# COPTER TACAN 004

SE-3, 10 OCT 2019 to 07 NOV 2019

SE-3, 10 OCT 2019 to 07 NOV 2019