

WAAS CH 82615 W30A	APP CRS 305°	Rwy Idg TDZE Apt Elev	5301 1142 1157
--	------------------------	-----------------------------	---

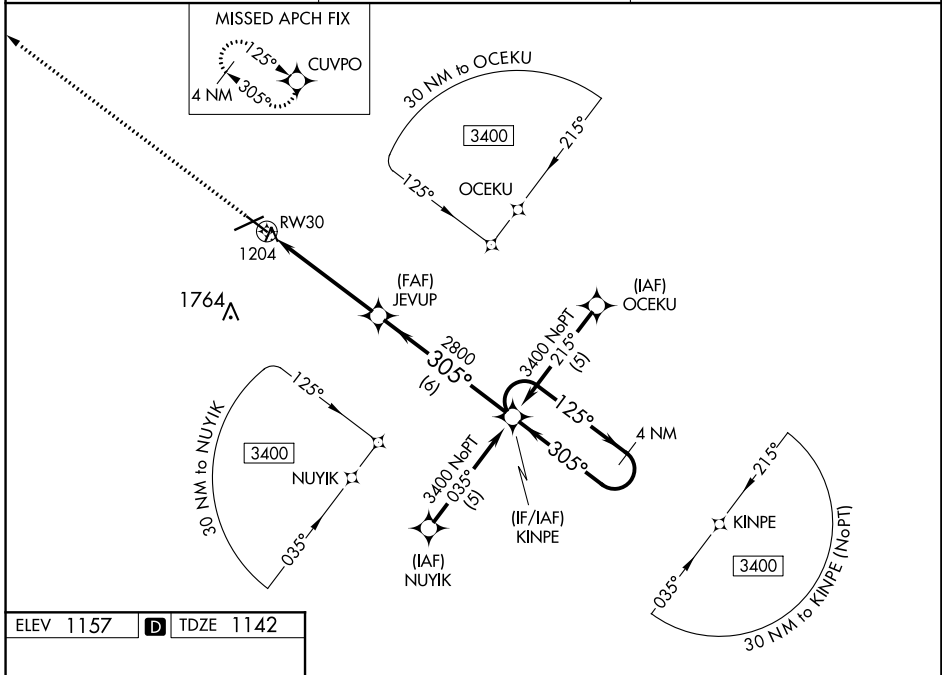
RNAV (GPS) RWY 30

FORT DODGE RGNL (FOD)

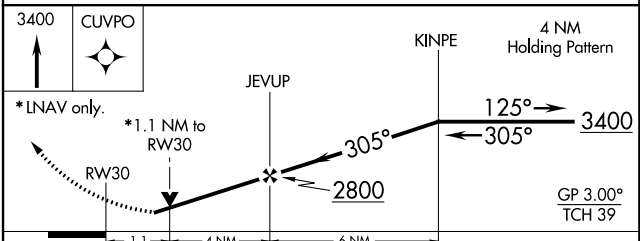
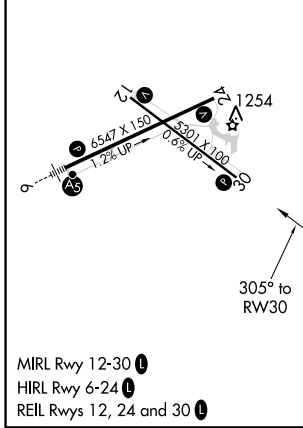
⚠ For uncompensated Baro-VNAV systems, LNAV/VNAV NA below -17°C (2°F) or above 54°C (130°F). DME/DME RNP-0.3 NA. Helicopter visibility below ¼ SM NA. VDP and Baro-VNAV NA when using Webster City altimeter setting. When local altimeter setting not received, use Webster City altimeter setting and increase all DA 42 feet and all MDA 60 feet, increase LPV all Cats and LNAV Cats C and D visibility ¼ mile.

MISSED APPROACH: Climb to 3400 direct CUVPO and hold.

AWOS-3PT 118.775	MINNEAPOLIS CENTER 134.0 288.3	UNICOM 123.0 (CTAF) 0
----------------------------	--	---------------------------------



ELEV 1157	D	TDZE 1142
-----------	----------	-----------



CATEGORY	A	B	C	D
LPV DA		1424-1	282 (300-1)	
LNAV/VNAV DA		1474-1¼	332 (400-1¼)	
LNAV MDA		1520-1	378 (400-1)	1520-1¼ 378 (400-1¼)
CIRCLING	1560-1 403 (500-1)	1620-1 463 (500-1)	1620-1½ 463 (500-1½)	1720-2 563 (600-2)

NC-3, 10 OCT 2019 to 07 NOV 2019

NC-3, 10 OCT 2019 to 07 NOV 2019