

WAAS CH <b>45815</b> <b>W24A</b>	APP CRS <b>243°</b>	Rwy Idg TDZE Apt Elev	<b>6547</b> <b>1156</b> <b>1157</b>
--	------------------------	-----------------------------	---

# RNAV (GPS) RWY 24

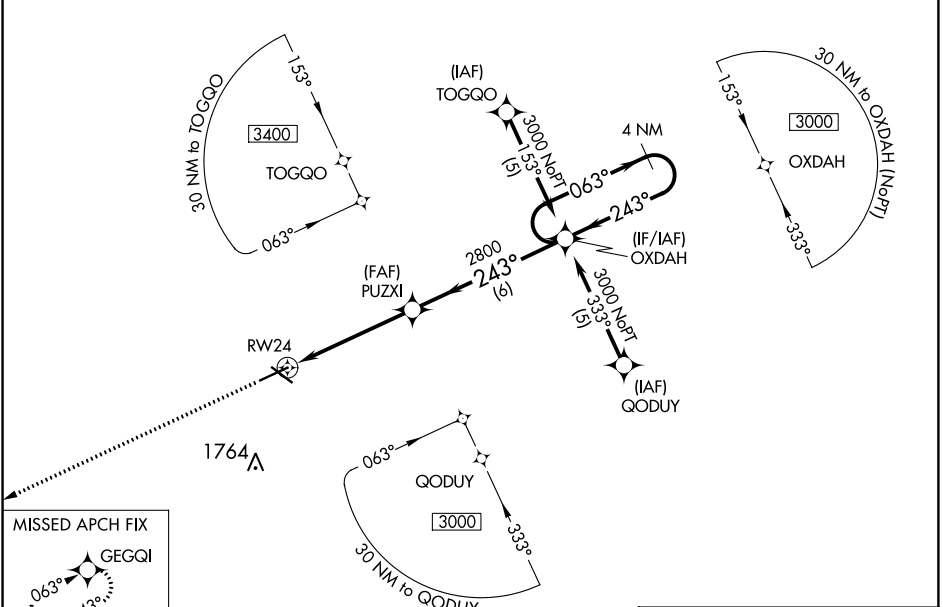
FORT DODGE RGNL (FOD)

RNP APCH

Baro-VNAV and VDP NA when using Webster City altimeter setting. For uncompensated Baro-VNAV systems, LNAV/VNAV NA below -17°C or above 46°C. When local altimeter setting not received, use Webster City altimeter setting and increase all DA 42 feet and all MDA 60 feet, increase LNAV Cats C and D visibility 1/4 mile.

MISSED APPROACH:  
Climb to 3000 direct GEGQI and hold.

AWOS-3PT <b>118.775</b>	MINNEAPOLIS CENTER <b>134.0 288.3</b>	UNICOM <b>123.0 (CTAF) 0</b>
----------------------------	--	---------------------------------



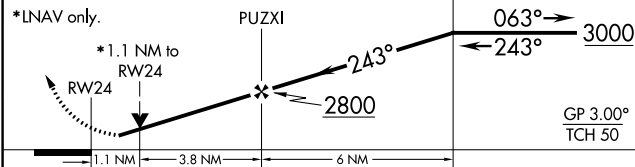
NC-3, 10 OCT 2019 to 07 NOV 2019

NC-3, 10 OCT 2019 to 07 NOV 2019

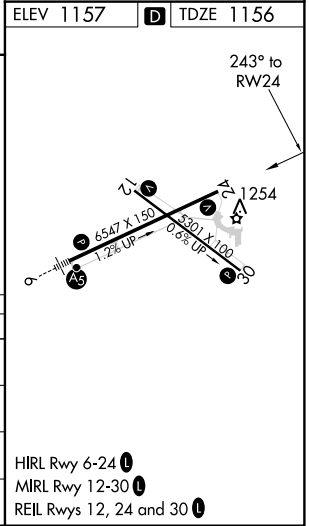
ELEV 1157	TDZE 1156
-----------	-----------

3000 GEGQI VGSi and RNAV glidepath not coincident (VGSi Angle 3.00/TCH 41).

\*LNAV only.



CATEGORY	A	B	C	D
LPV DA		1406-1	250 (300-1)	
LNAV/VNAV DA		1504-1 1/4	348 (400-1 1/4)	
LNAV MDA	1560-1	404 (500-1)	1560-1 1/8 404 (500-1 1/8)	1560-1 1/4 404 (500-1 1/4)
CIRCLING	1560-1 403 (500-1)	1620-1 463 (500-1)	1620-1 1/2 463 (500-1 1/2)	1720-2 563 (600-2)



HIRL Rwy 6-24 0  
MIRL Rwy 12-30 0  
REIL Rwy 12, 24 and 30 0