

SW-3, 10 OCT 2019 to 07 NOV 2019

D-ATIS 124.25
CLNC DEL 118.1
CPDIC GND CON 121.9 257.8
ONTARIO TOWER 120.6 360.775
SOCAL DEP CON 135.4 377.125

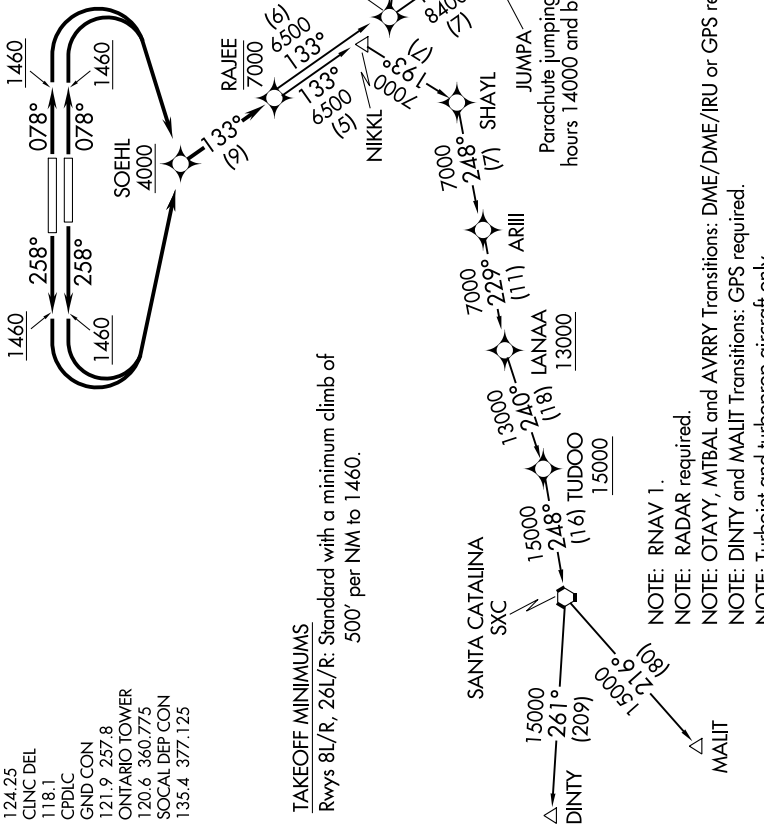
TAKEOFF MINIMUMS

Rwys 8L/R, 26L/R: Standard with a minimum climb of 500' per NM to 1460.

**TOP ALTITUDE
DINTY AND MALIT TRANSITIONS:
15000**
**ALL OTHER TRANSITIONS:
ASSIGNED BY ATC**

TTRUE ✧
WURMO ✧
LVELL ✧

NOTE: Parachute jumping and ultralight activities over L65, 14500' and below, north of track between ELLBO and ARRDY.



NOTE: RNAV 1.

NOTE: RADAR required.

NOTE: OTAYY, MTBAL and AVRRY Transitions: DME/DME/IRU or GPS required.

NOTE: DINTY and MALIT Transitions: GPS required.

NOTE: Turbojet and turboprop aircraft only.

NOTE: MALIT and DINTY Transitions available between 2200 and 0600 local only.

NOTE: DINTY Transition ATC assigned only.

NOTE: For non-GPS equipped aircraft on the AVRRY Transition, JULIAN VORTAC (JUL) must be operational.

NOTE: Chart not to scale.

(NARRATIVE ON FOLLOWING PAGE)

SW-3, 10 OCT 2019 to 07 NOV 2019