


WAAS CH 90199 W28A	APP CRS 288°	Rwy Idg TDZE 341 Apt Elev 342
--	------------------------	---

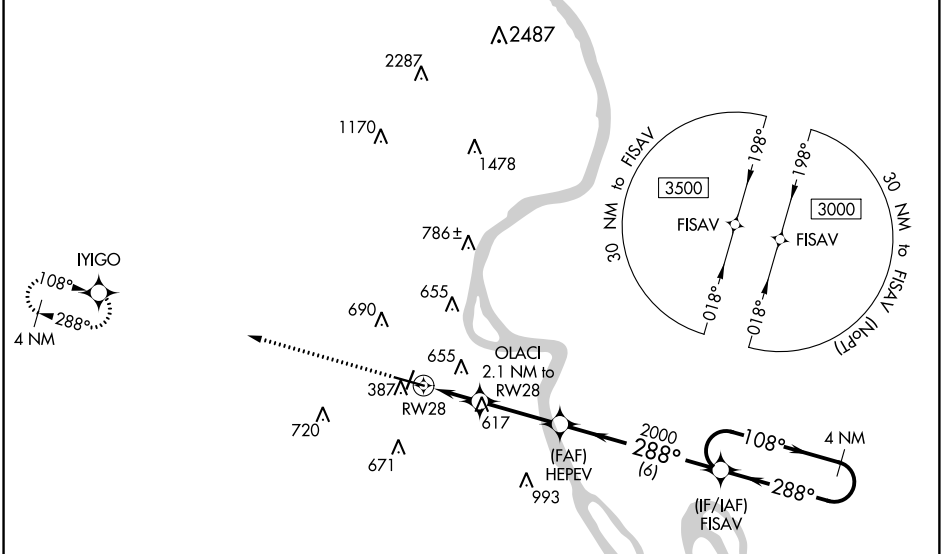
RNAV (GPS) RWY 28

CAPE GIRARDEAU RGNL (CGI)

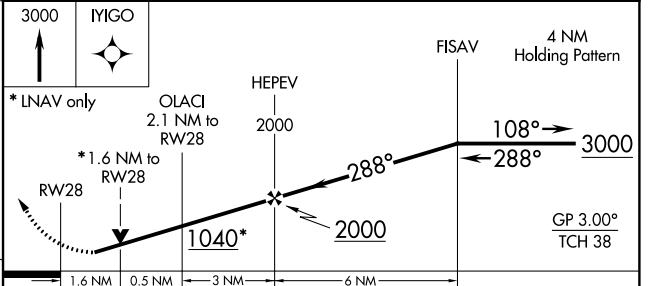
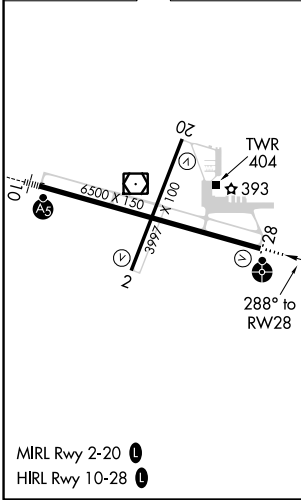
⚠ DME/DME RNP-0.3 NA. When local altimeter setting not received, use Cairo Rgnl altimeter setting and increase all DA 48 feet and all MDA 60 feet; increase LPV all Cats, LNAV/VNAV all Cats, and Circling Cat C/D visibility 1/8 mile and LNAV Cat C/D visibility 1/8 mile. VDP NA when using Cairo Rgnl altimeter setting. Helicopter visibility reduction below 3/4 SM NA. For inop ODALS, increase LPV all Cats, LNAV/VNAV all Cats and LNAV Cat C/D visibilities 1/8 mile. When using Cairo Rgnl altimeter setting, for inop ODALS, increase LPV all Cats, LNAV/VNAV all Cats and LNAV Cat C/D visibilities 1/8 mile. Baro-VNAV NA.

ODALS  **MISSED APPROACH:** Climb to 3000 direct IYIGO and hold.

ASOS 120.55	MEMPHIS CENTER 133.65 292.15	CAPE GIRARDEAU TOWER ★ 125.525 (CTAF) 	GND CON 121.6	UNICOM 122.95
-----------------------	--	---	-------------------------	-------------------------



ELEV 342	D	TDZE 341
-----------------	----------	-----------------



CATEGORY	A	B	C	D
LPV DA		723-1 1/8	382 (400-1 1/8)	
LNAV/VNAV DA		821-1 1/2	480 (500-1 1/2)	
LNAV MDA	880-3/4	539 (600-3/4)	880-1 3/8	539 (600-1 3/8)
C CIRCLING	880-1 538 (600-1)	960-1 618 (700-1)	1000-1 3/4 658 (700-1 3/4)	1080-2 1/4 738 (800-2 1/4)

NC-3, 10 OCT 2019 to 07 NOV 2019

NC-3, 10 OCT 2019 to 07 NOV 2019