

WAAS CH <b>42832</b> <b>W20A</b>	APP CRS <b>203°</b>	Rwy Idg TDZE Apt Elev	<b>3996</b> <b>339</b> <b>342</b>
--	------------------------	-----------------------------	---

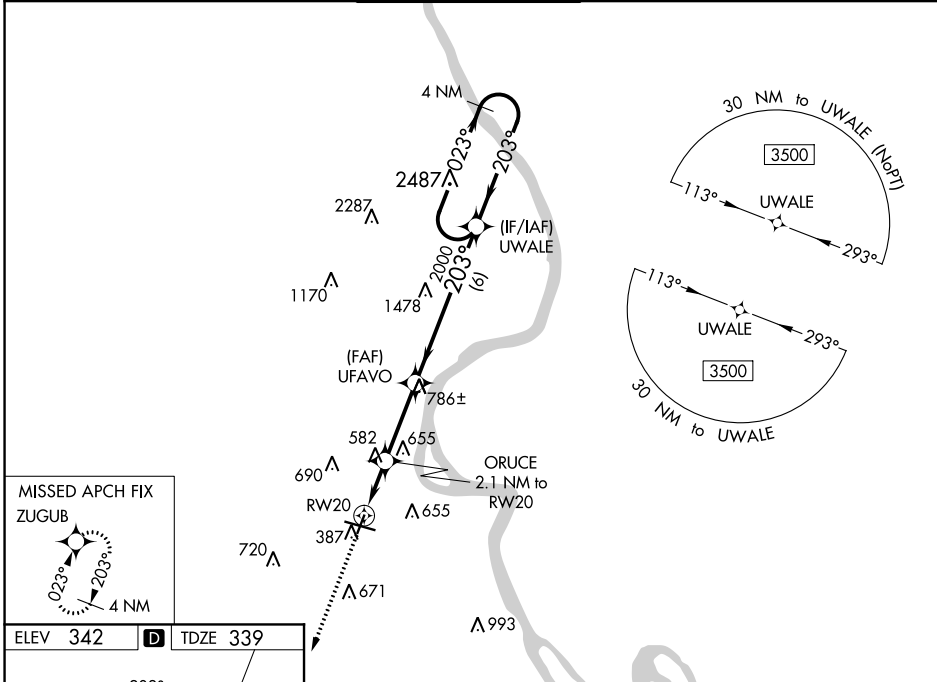
# RNAV (GPS) RWY 20

CAPE GIRARDEAU RGNL (CGI)

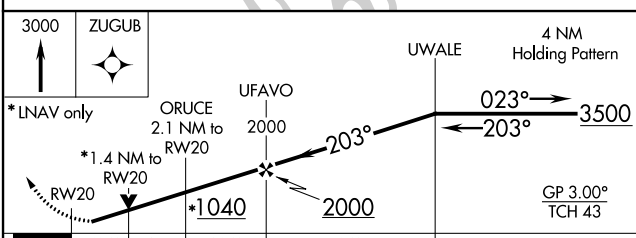
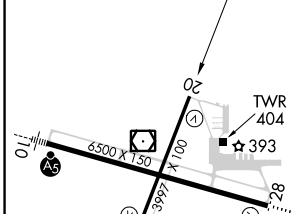
**⚠** For uncompensated Baro-VNAV systems, LNAV/VNAV NA below -17°C (2°F) or above 54°C (130°F). DME/DME RNP-0.3 NA. When local altimeter setting not received, use Cairo Rgnl altimeter setting and increase all DA 48 feet and all MDA 60 feet; increase LNAV Cat C/D visibility and Circling Cat C/D visibility ¼ mile. Helicopter visibility reduction below ¾ SM NA. Baro-VNAV and VDP NA when using Cairo Rgnl altimeter setting.

**MISSED APPROACH:**  
Climb to 3000 direct ZUGUB and hold.

ASOS <b>120.55</b>	MEMPHIS CENTER <b>133.65 292.15</b>	CAPE GIRARDEAU TOWER * <b>125.525 (CTAF) 0</b>	GND CON <b>121.6</b>	UNICOM <b>122.95</b>
-----------------------	--	---	-------------------------	-------------------------



ELEV <b>342</b>	<b>D</b>	TDZE <b>339</b>
-----------------	----------	-----------------



CATEGORY	A	B	C	D
LPV DA		589-1	250 (300-1)	
LNAV/VNAV DA		603-1	264 (300-1)	
LNAV MDA	840-1	501 (500-1)	840-1 <sup>3</sup> / <sub>8</sub>	501 (500-1 <sup>3</sup> / <sub>8</sub> )
<b>C</b> CIRCLING	860-1 518 (600-1)	960-1 618 (700-1)	1000-1 <sup>3</sup> / <sub>4</sub> 658 (700-1 <sup>3</sup> / <sub>4</sub> )	1080-2 <sup>1</sup> / <sub>4</sub> 738 (800-2 <sup>1</sup> / <sub>4</sub> )

NC-3, 10 OCT 2019 to 07 NOV 2019

NC-3, 10 OCT 2019 to 07 NOV 2019