

LOC/DME I-CGI	APP CRS	Rwy Idg	6499
109.5	108°	TDZE	337
Chan 32		Apt Elev	342

# ILS or LOC RWY 10

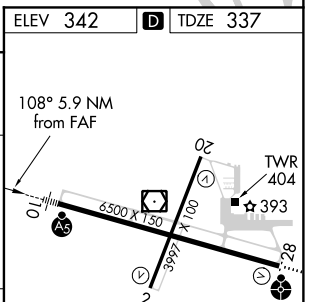
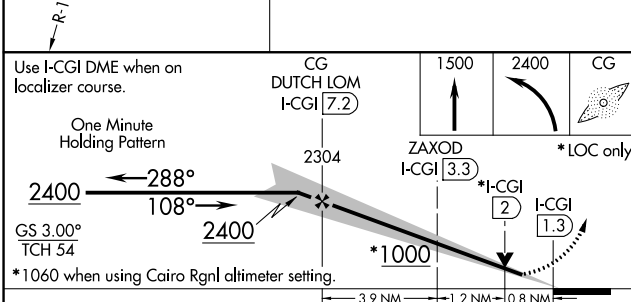
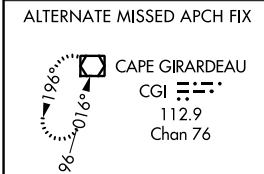
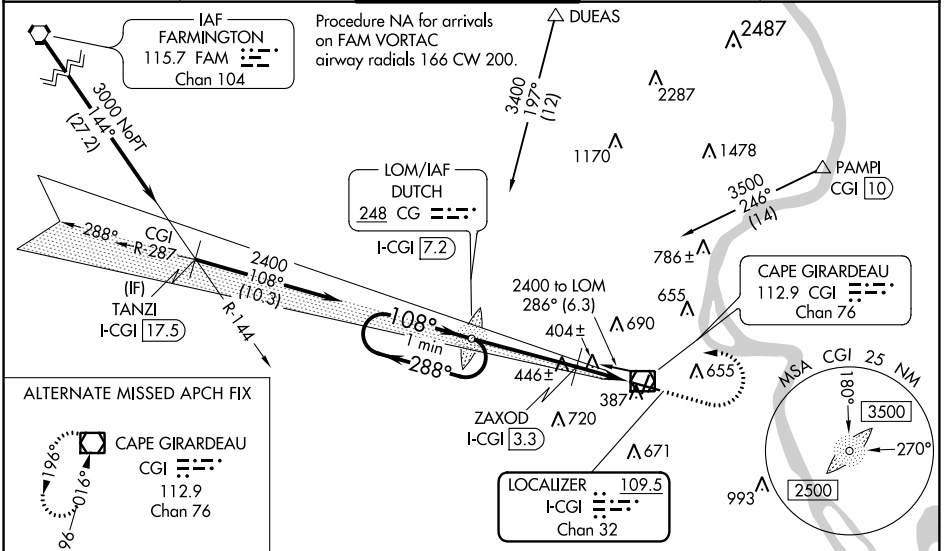
CAPE GIRARDEAU RGNL (CGI)

**⚠** When local altimeter setting not received, use Cairo Rgnl altimeter setting and increase all DA 48 feet and all MDA 60 feet; increase S-LOC 10 Cat C and D visibility 1/8 mile and Circling Cat C visibility 1/8 mile and Circling Cat D visibility 1/4 mile; increase ZAXOD fix minimums S-LOC Cat C/D visibility 1/8 mile and Circling Cats C and D visibility 1/4 mile. VDP NA when using Cairo Rgnl altimeter setting. ADF or DME Required. For inop MALS/R, increase S-LOC 10 Cat C and D visibility 3/8 mile. For inop MALS/R, when using Cairo Rgnl altimeter setting, increase S-LOC 10 Cat C and D visibility 3/8 mile.

**MALS/R**

**MISSED APPROACH:**  
Climb to 1500 then climbing left turn to 2400 direct DUTCH LOM/I-CGI 7.2 DME and hold.

ASOS	MEMPHIS CENTER	CAPE GIRARDEAU TOWER ★	GND CON	UNICOM
120.55	133.65 292.15	125.525 (CTAF) 0	121.6	122.95



CATEGORY	A	B	C	D
S-ILS 10	537-1/2 200 (200-1/2)			
S-LOC 10	1000-1/2	663 (700-1/2)	1000-1 1/2	663 (700-1 1/2)
<b>C</b> CIRCLING	1000-1	658 (700-1)	1000-1 7/8	1080-2 1/4
ZAXOD FIX MINIMUMS				
S-LOC 10	660-1/2 323 (400-1/2)			
<b>C</b> CIRCLING	860-1	960-1	1000-1 3/4	1080-2 1/4
	518 (600-1)	618 (700-1)	658 (700-1 3/4)	738 (800-2 1/4)

MIRL Rwy 2-20 0

HIRL Rwy 10-28 0

FAF to MAP 5.9 NM

Knots	60	90	120	150	180
Min:Sec	5:54	3:56	2:57	2:22	1:58

NC-3, 10 OCT 2019 to 07 NOV 2019

NC-3, 10 OCT 2019 to 07 NOV 2019