

WAAS CH <b>61099</b> <b>W36A</b>	APP CRS <b>356°</b>	Rwy Idg <b>5602</b> TDZE <b>1307</b> Apt Elev <b>1324</b>
--	------------------------	---

# RNAV (GPS) RWY 36

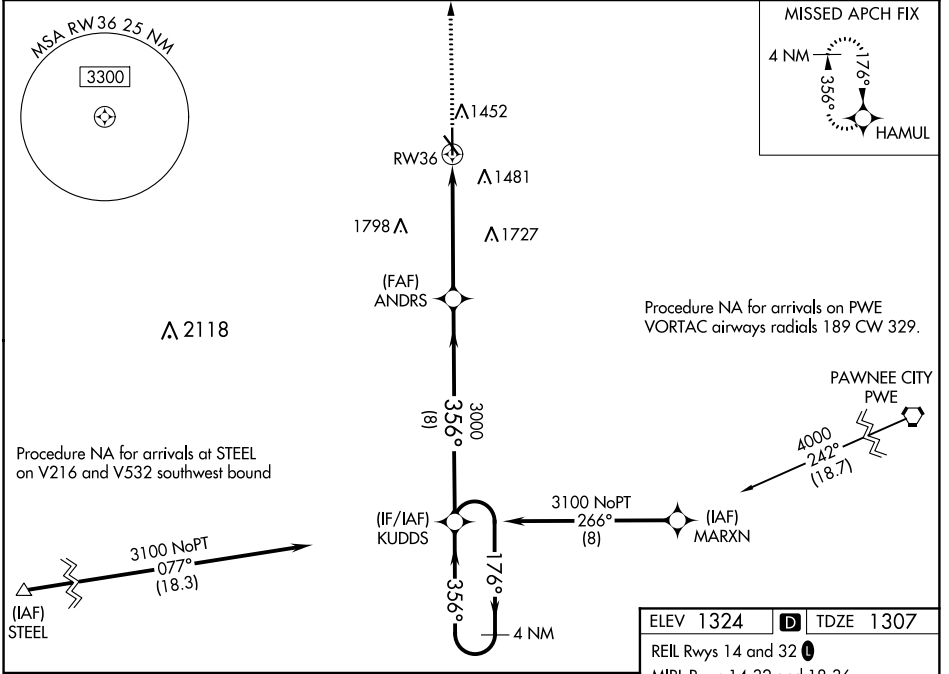
BEATRICE MUNI (BIE)

**⚠** Inoperative table does not apply to LPV all Cats. For uncompensated Baro-VNAV systems, LNAV/VNAV NA below -22°C (-7°F) or above 54°C (130°F). For inoperative MALSRL, increase LNAV/VNAV all Cats visibility to ½ mile and LNAV Cat A/B visibility to 1. DME/DME RNP-0.3 NA.

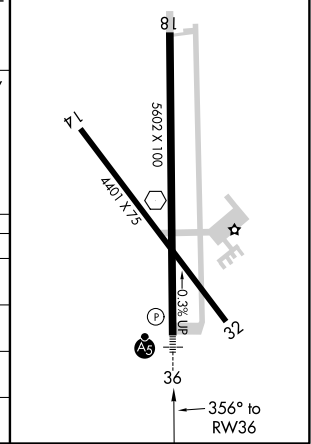
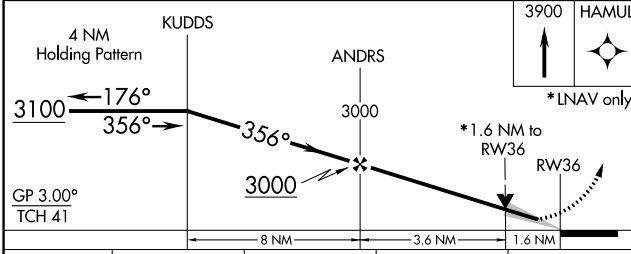
**MALSRL**

**MISSED APPROACH:** Climb to 3900 direct HAMUL and hold.

AWOS-3 <b>125.325</b>	MINNEAPOLIS CENTER <b>126.4 317.7</b>	COLUMBUS RADIO <b>122.5</b>	UNICOM <b>122.8 (CTAF)</b>
--------------------------	--	--------------------------------	-------------------------------



ELEV 1324	<b>D</b>	TDZE 1307
REIL Rwy 14 and 32		
MIRL Rwy 14-32 and 18-36		



CATEGORY	A	B	C	D
LPV DA		1507-¾	200 (200-¾)	
LNAV/VNAV DA		1559-¾	252 (300-¾)	
LNAV MDA	1840-¾	533 (600-¾)	1840-1	533 (600-1)
<b>C</b> CIRCLING	1840-1	516 (600-1)	2000-2 676 (700-2)	2100-2½ 776 (800-2½)

NC-2, 10 OCT 2019 to 07 NOV 2019

NC-2, 10 OCT 2019 to 07 NOV 2019