

WAAS CH 69620 W14A	APP CRS 139°	Rwy Idg TDZE Apt Elev	4401 1319 1324
--	------------------------	-----------------------------	---

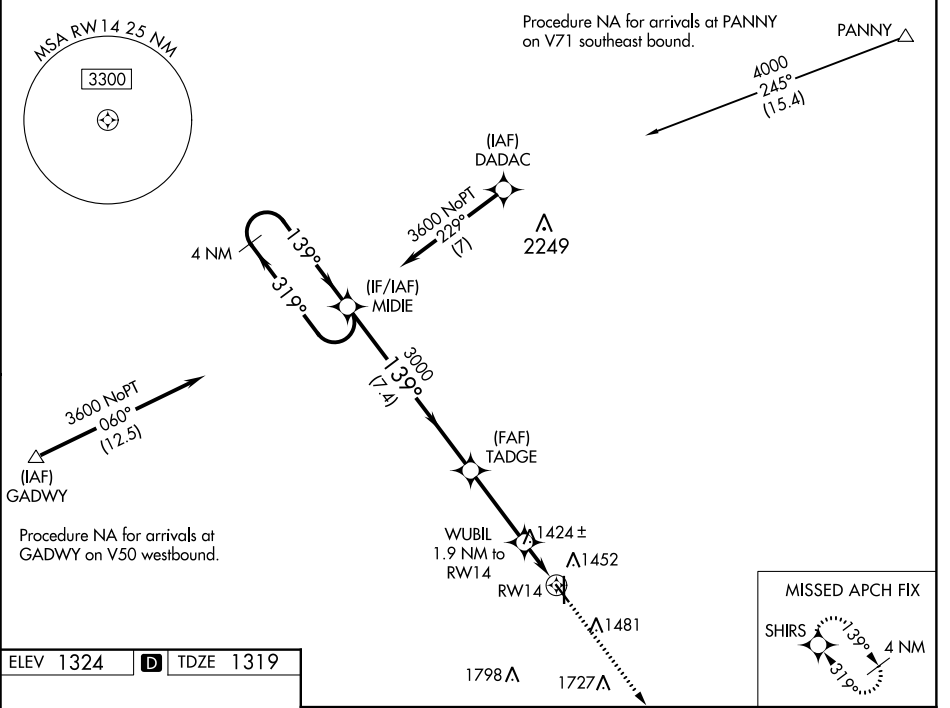
RNAV (GPS) RWY 14

BEATRICE MUNI (BIE)

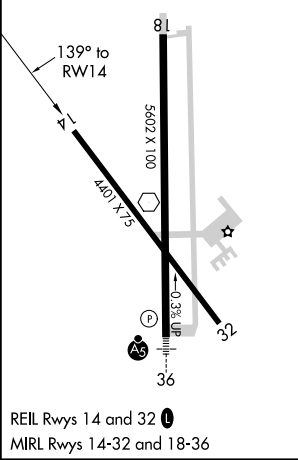
▼ For uncompensated Baro-VNAV systems, LNAV/VNAV NA below -17°C (2°F) or above 35°C (95°F).
▲ DME/DME RNP-0.3 NA.

MISSED APPROACH: Climb to 3600 direct SHIRS and hold.

AWOS-3 125.325	MINNEAPOLIS CENTER 126.4 317.7	COLUMBUS RADIO 122.5	UNICOM 122.8 (CTAF) 0
--------------------------	--	--------------------------------	---------------------------------



ELEV 1324	D	TDZE 1319
-----------	----------	-----------



	4 NM Holding Pattern	MIDIE	TADGE	WUBIL 1.9 NM to RW14	SHIRS
	3600	319°	139°	3000	3600
	GP 3.00° TCH 45	7.4 NM	3.2 NM	*1.2 NM to RW14	*LNAV only
				0.7	
CATEGORY	A	B	C	D	
LPV DA		1569-1	250 (300-1)		
LNAV/VNAV DA		1569-1	250 (300-1)		
LNAV MDA	1760-1	441 (500-1)	1760-1 $\frac{2}{3}$	441 (500-1 $\frac{2}{3}$)	
C CIRCLING	1820-1	496 (500-1)	2000-2 676 (700-2)	2100-2 $\frac{1}{2}$ 776 (800-2 $\frac{1}{2}$)	

NC-2: 10 OCT 2019 to 07 NOV 2019

NC-2: 10 OCT 2019 to 07 NOV 2019