


WAAS CH 45621 W23A	APP CRS 229°	Rwy Idg TDZE Apt Elev	5998 183 187
--	------------------------	-----------------------------	---

RNAV (GPS) Z RWY 23

MORRISTOWN MUNI (MMU)

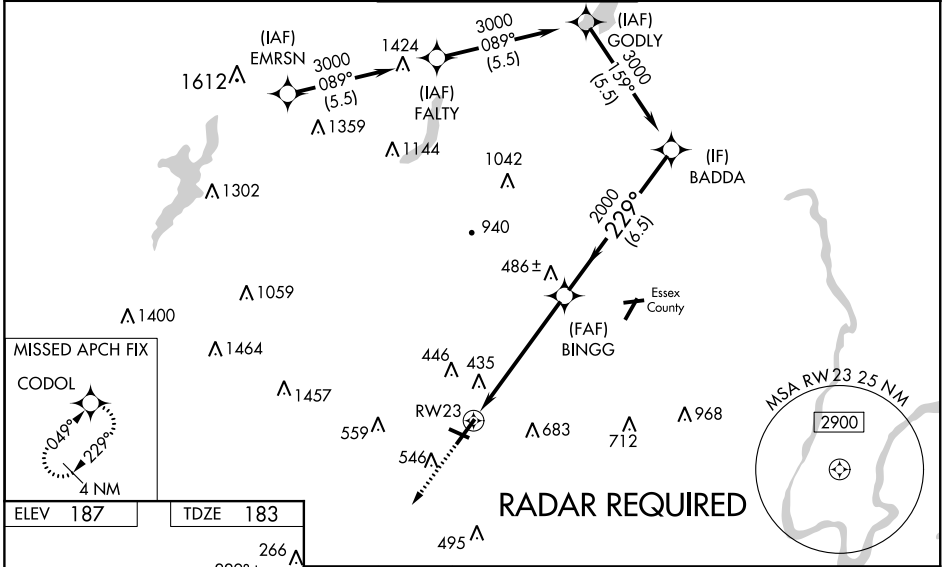
▼ For uncompensated Baro-VNAV systems, LNAV/VNAV NA below -15 °C (5°F) or above 54 °C (130°F). For inop MALS, increase LNAV/VNAV all Cats visibility to 1½ and LNAV Cats C and D visibility to 1¾ mile. DME/DME RNP-0.3 NA. VDP and Baro-VNAV NA when using Newark Liberty Intl altimeter setting. Circling Rwy 13, 31 NA at night. Rwy 23 helicopter visibility reduction below 1 SM NA. Rwy 13, 31 helicopter visibility reduction below 1 SM NA. For inop ALS, increase LNAV/VNAV all Cats visibility to 1½ SM, and LNAV Cat A/B to 1 SM, and Cat C/D to 1¾ SM. For inop ALS when using Newark Liberty Intl altimeter setting, increase LPV all Cats visibility to 1½ SM, and LNAV/VNAV all Cats to 2½ SM, and LNAV Cat A/B to 1 SM, and LNAV Cat C/D to 1¾ SM. When local altimeter setting not received, use Newark Liberty Intl altimeter setting and increase LPV DA to 542 feet, and LNAV/VNAV DA to 809 feet, and LNAV/VNAV visibility ½ SM; increase all MDAs 60 feet and LNAV visibility Cat C and D ½ SM.

MALS R

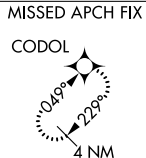
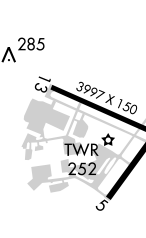


MISSED APPROACH:
Climb to 2000 direct
CODOL and hold.

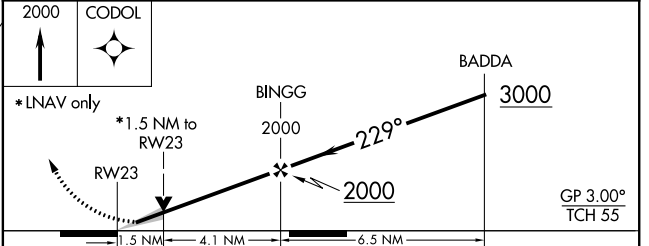
ATIS 124.25	NEW YORK APP CON 127.6 379.9	MORRISTOWN TOWER * 118.10 (CTAF) 353.9	GND CON 134.2	CLNC DEL 128.6
-----------------------	--	--	-------------------------	--------------------------



ELEV 187 TDZE 183

REIL Rwys 5 and 31
HIRL Rwy 5-23
MIRL Rwy 13-31



CATEGORY	A	B	C	D
LPV DA		488-½	305 (400-½)	
LNAV/VNAV DA		755-1½	572 (600-1½)	
LNAV MDA	700-¾	517 (600-¾)	700-1	517 (600-1)
CIRCLING	860-1 673 (700-1)	900-1 713 (800-1)	1000-2½ 813 (900-2½)	1200-3 1013 (1100-3)

NE-2, 10 OCT 2019 to 07 NOV 2019

NE-2, 10 OCT 2019 to 07 NOV 2019