

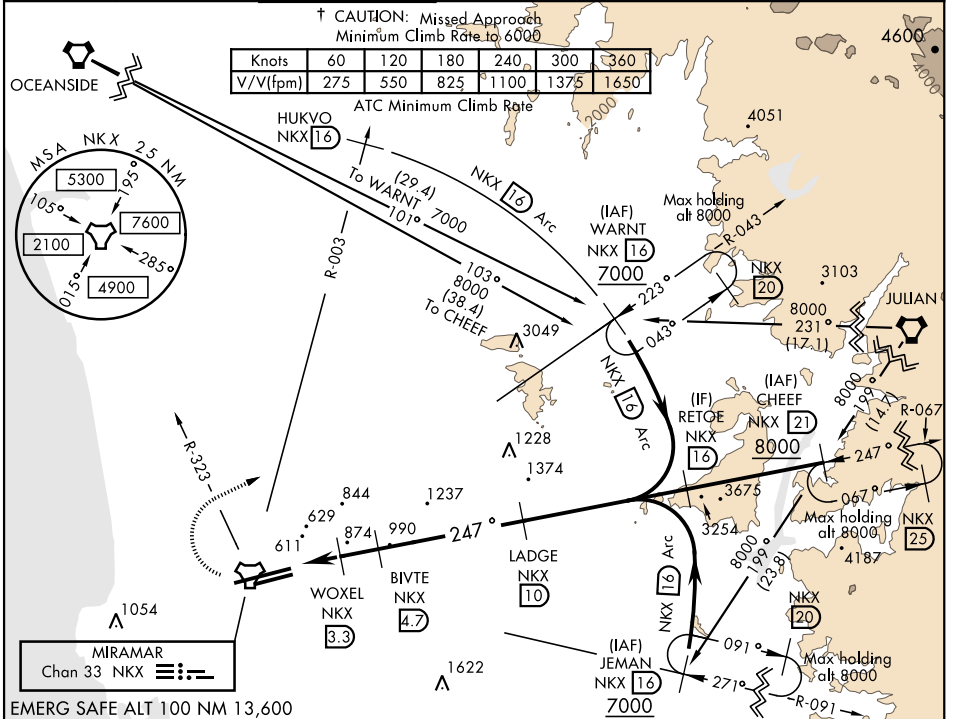
TACAN RWY 24R

TACAN NKX Chan 33	APCH CRS 247°	Rwy ldg TDZE 24R 12,000 24L 475 Arpt Elev 477	24L 8001 24L 477	AL-903 [USN] MIRAMAR MCAS (JOE FOSS FLD) (KNKX)
----------------------	------------------	---	---------------------	--

* When ALS inop, increase CAT AB vis to 1 mile, CAT CD to 1/8 miles.

 † MISSED APPROACH: Climb to 1500, then climbing right turn to 7000 via NKX TACAN R-003 to HUKVO. Arc NE of NKX via the 16 mile arc to WARNT and hold. Cross NKX R-323 at 3000 mandatory, cross HUKVO at 6000 mandatory.

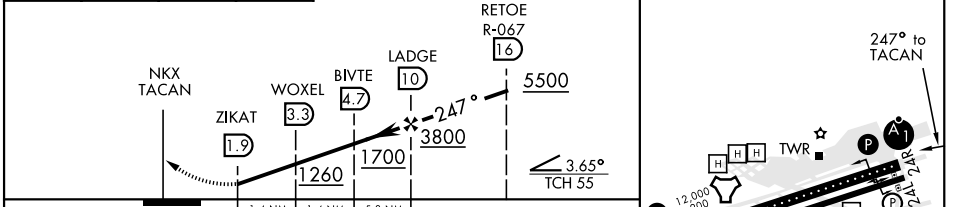
ATIS * 352.0	SOCAL APP CON 132.2 269.1	FOSS TOWER * 135.2 298.925 0	GND CON 128.625 307.325	CLNC DEL 125.975 254.325	LA CENTER 291.7	ASR/PAR
-----------------	------------------------------	---------------------------------	----------------------------	-----------------------------	--------------------	---------



SW-3, 10 OCT 2019 to 07 NOV 2019

SW-3, 10 OCT 2019 to 07 NOV 2019

1500	7000	HUKVO NKX [16]	VGSI and descent angles not coincident.	ELEV 477	TDZE 24R 475 TDZE 24L 477
------	------	----------------	---	----------	------------------------------



CATEGORY	A	B	C	D
S-24R *	1140-1/2	665 (700-1/2)	1140-1 1/2	665 (700-1 1/2)
SIDE-STEP 24L	1140-1	663 (700-1)	1140-1 7/8	663 (700-1 7/8)
CIRCLING	1140-1	663 (700-1)	1140-1 7/8 663 (700-1 7/8)	1180-2 1/4 703 (800-2 1/4)

HIRL Rwy 6L-24R
HIRL Rwy 6R-24L

TACAN RWY 24R