

SAN DIEGO, CALIFORNIA

RNAV (GPS) RWY 24L

WAAS CH 54028 W24A	APCH CRS 243°	Rwy ldg TDZE Arpt Elev	8001 477 477
--------------------------	------------------	------------------------------	--------------------

AL-903 [USN]

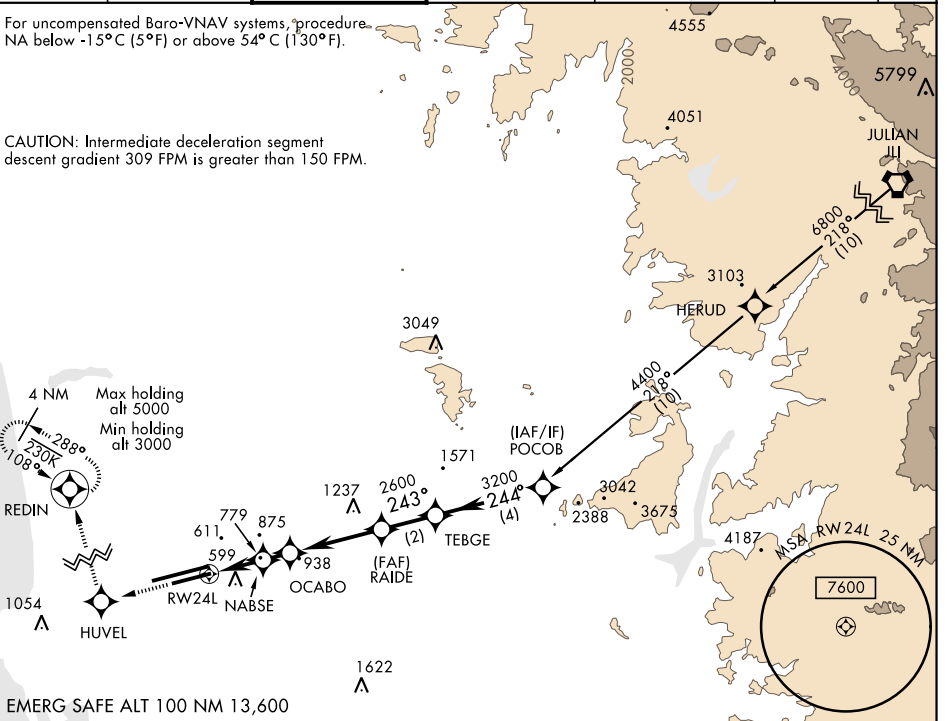
MIRAMAR MCAS (JOE FOSS FLD) (KNKX)

▼ DME/DME RNP-0.3 NA		MISSED APPROACH: Climb to 3000 direct HUVEL, 288° track to REDIN and hold.			
----------------------	--	--	--	--	--

ATIS ★ 352.0	SOCAL APP CON 132.2 269.1	FOSS TOWER ★ 135.2 298.925 0	GND CON 128.625 307.325	CLNC DEL 125.975 254.325	LA CENTER 291.7	ASR/ PAR
-----------------	------------------------------	---------------------------------	----------------------------	-----------------------------	--------------------	-------------

For uncompensated Baro-VNAV systems, procedure NA below -15°C (5°F) or above 54°C (130°F).

CAUTION: Intermediate deceleration segment descent gradient 309 FPM is greater than 150 FPM.

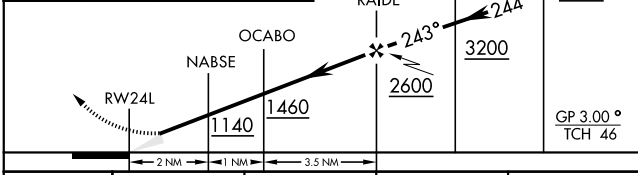


SW-3, 10 OCT 2019 to 07 NOV 2019

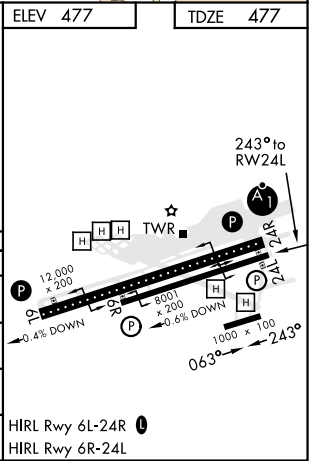
SW-3, 10 OCT 2019 to 07 NOV 2019

EMERG SAFE ALT 100 NM 13,600

3000	HUVEL	REDIN	ELEV 477	TDZE 477
------	-------	-------	----------	----------



CATEGORY	A	B	C	D
LPV DA	677- ⁷ / ₈ 200		(200- ³ / ₄)	
LNAV/VNAV DA	733- ⁷ / ₈ 256 (300- ⁷ / ₈)	744- ⁷ / ₈ 267 (300- ⁷ / ₈)	752- ⁷ / ₈ 275 (300- ⁷ / ₈)	763- ⁷ / ₈ 286 (300- ⁷ / ₈)
LNAV MDA	1040-1 563 (600-1)		1040-1 ⁵ / ₈ 563 (600-1 ⁵ / ₈)	
CIRCLING	1040-1 563 (600-1)		1040-1 ⁵ / ₈ 563 (600-1 ⁵ / ₈)	1180-2 ¹ / ₄ 703 (800-2 ¹ / ₄)



SAN DIEGO, CALIFORNIA
Amdt 3 13SEP18

32°52'N-117°09'W

MIRAMAR MCAS (JOE FOSS FLD) (KNKX)

RNAV (GPS) RWY 24L