

SAN DIEGO, CALIFORNIA

# ILS or LOC/DME RWY 24R

LOC I-NKX <b>111.15</b>	APCH CRS <b>243°</b>	Rwy Idg <b>8001</b>	24R <b>12,000</b>
		TDZE <b>477</b>	<b>475</b>
		Arprt Elev <b>477</b>	<b>477</b>

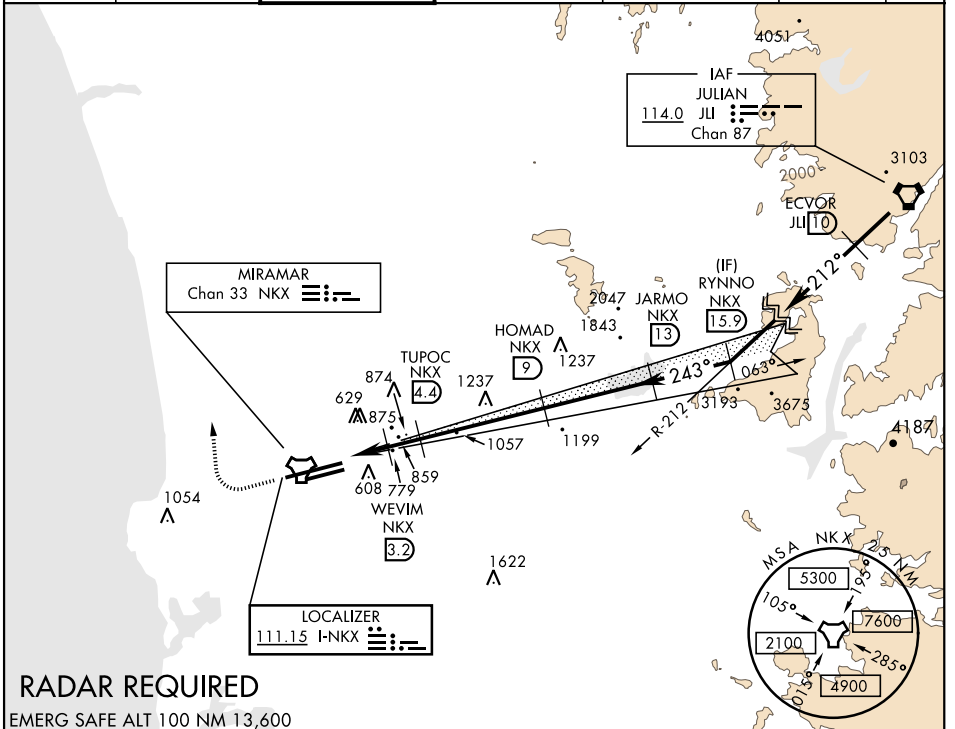
AL-903 [USN] MIRAMAR MCAS (JOE FOSS FLD) (KNKX)

**ALSF-1**

**MISSED APPROACH:** Climb to 1500, then climbing right turn to 3000 via heading 340°. Expect radar vectors.

\* When ALS inop, increase CAT ABDE vis to 3/4 mile.  
 \*\* When ALS inop, increase CAT AB vis to 1 mile, CAT CDE vis to 1 3/8 miles.  
 \*\*\* CAT E circling not authorized S of Rwy 6R-24L.

ATIS ★ <b>352.0</b>	SOCAL APP CON <b>132.2 269.1</b>	FOSS TOWER ★ <b>135.2 298.925</b>	GND CON <b>128.625 307.325</b>	CLNC DEL <b>125.975 254.325</b>	LA CENTER <b>291.7</b>	ASR/PAR
------------------------	-------------------------------------	--------------------------------------	-----------------------------------	------------------------------------	---------------------------	---------



SW-3, 10 OCT 2019 to 07 NOV 2019

SW-3, 10 OCT 2019 to 07 NOV 2019

## RADAR REQUIRED

EMERG SAFE ALT 100 NM 13,600

1500	3000	VGSI and descent angles not coincident.					ELEV 477	TDZE 24L 477	
								TDZE 24R 475	
								243° 7.6 NM from FAF	
								GS 3.00° TCH 53	
CATEGORY	A	B	C	D	E				
S-ILS 24R *	675-1/2		200	(200-1/2)					
S-LOC/DME 24R **	920-1/2	445 (500-1/2)	920-7/8	445 (500-7/8)					
SIDESTEP 24L	920-1	443 (500-1)	920-13/8	443 (500-13/8)					
CIRCLING ***	940-1	960-1	960-1 1/2	1180-2 1/4	1360-3	HIRL Rwy 6L-24R			
	463 (500-1)	483 (500-1)	483 (500-1 1/2)	703 (800-2 1/4)	883 (900-3)				

SAN DIEGO, CALIFORNIA

32° 52'N-117° 09'W

MIRAMAR MCAS (JOE FOSS FLD) (KNKX)

Amcl 3 13SEP18

# ILS or LOC/DME RWY 24R