

WAAS CH <b>97736</b> <b>W19A</b>	APP CRS <b>195°</b>	Rwy Idg TDZE Apt Elev	<b>6230</b> <b>6</b> <b>8</b>
----------------------------------------	------------------------	-----------------------------	-------------------------------------

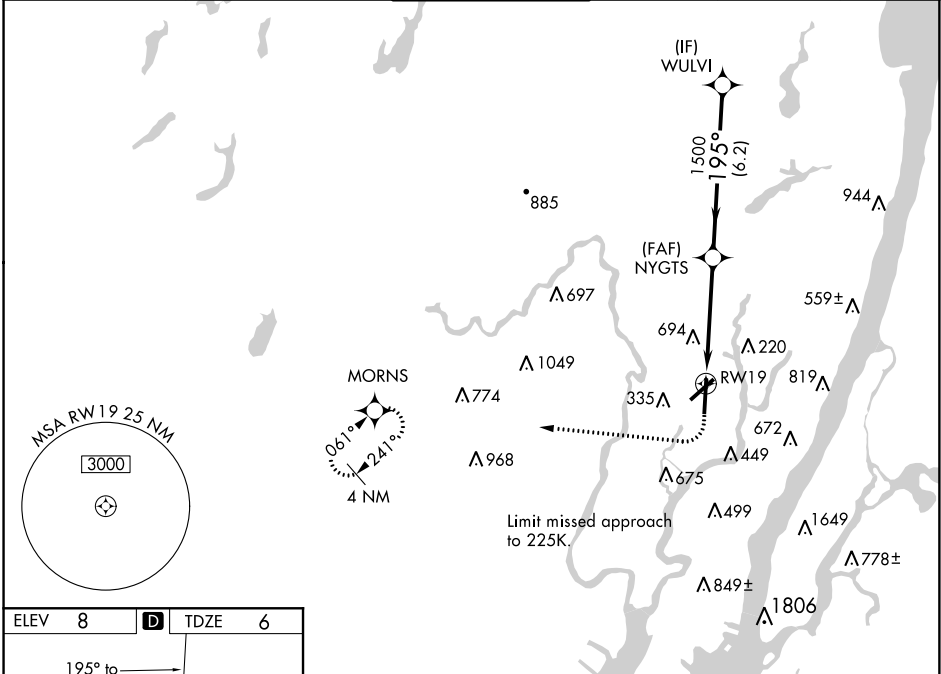
# RNAV (GPS) Y RWY 19

TETERBORO (TEB)

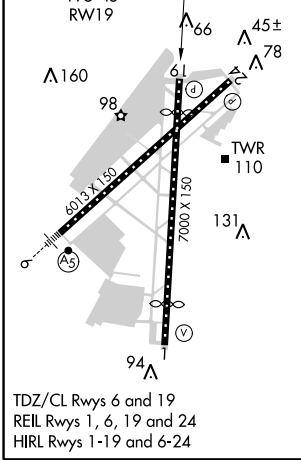
RNP APCH.  
 RADAR required for procedure entry.  
 For uncompensated Baro-VNAV systems, LNAV/VNAV NA below -12°C (11°F) or above 54°C (130°F). Circling NA for Cats B, C, and D NW of Rwy 6 and 19.  
 Circling Rwy 24 NA at night. Rwy 19 helicopter visibility reduction below 3/4 SM NA.

MISSED APPROACH: Climb to 420 then immediate climbing right turn to 3000 direct MORN5 and hold.

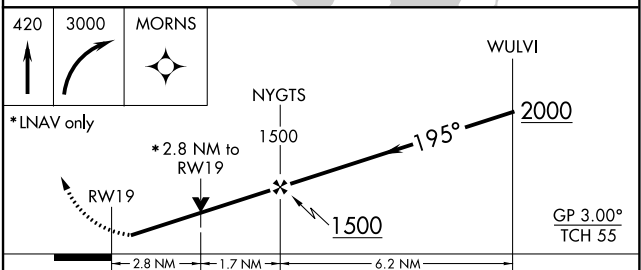
D-ATIS <b>114.2 132.85</b>	NEW YORK APP CON <b>127.6 379.9</b>	TETERBORO TOWER <b>119.5</b>	GND CON <b>121.9</b>	CLNC DEL <b>128.05</b>	CPDLC
-------------------------------	----------------------------------------	---------------------------------	-------------------------	---------------------------	-------



ELEV 8	<b>D</b>	TDZE 6
--------	----------	--------



TDZ/CL Rws 6 and 19  
 REIL Rws 1, 6, 19 and 24  
 HIRL Rws 1-19 and 6-24



CATEGORY	A	B	C	D
LPV DA		218-3/4	212 (300-3/4)	
LNAV/VNAV DA		1090-4	1084 (1100-4)	
LNAV MDA	960-1 1/4 954 (1000-1 1/4)	960-1 1/2 954 (1000-1 1/2)	960-3	954 (1000-3)
<b>C</b> CIRCLING	960-1 1/4 952 (1000-1 1/4)	960-1 1/2 952 (1000-1 1/2)	960-3 952 (1000-3)	1040-3 1032 (1100-3)

NE-2, 10 OCT 2019 to 07 NOV 2019

NE-2, 10 OCT 2019 to 07 NOV 2019