

LOC/DME I-TJL 110.15 Chan 38 (Y)	APP CRS 195°	Rwy Idg TDZE Apt Elev	6230 7 8
--	------------------------	-----------------------------	-------------------------------------

ILS or LOC RWY 19

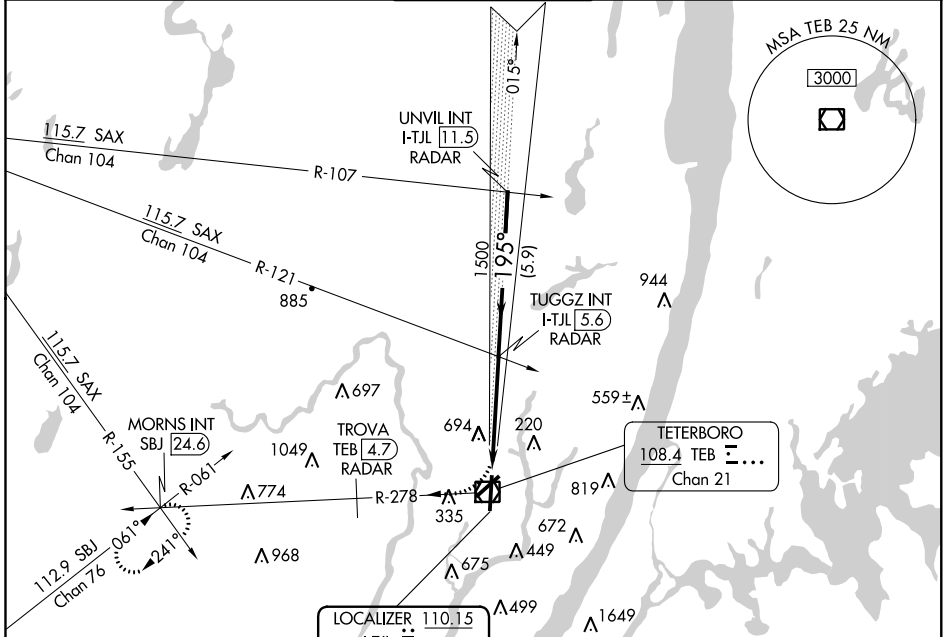
TETERBORO (TEB)

RADAR required.

▼ Circling NA for Cats B, C and D NW of Rwy 6 and 19. When Circling to Rwy 24 at night, operational VGSI required, remain on or above VGSI glidepath until threshold.

▲ MISSED APPROACH: Immediate climbing right turn to 1500 on heading 205° and TEB VOR/DME R-278 to TROVA/4.7 DME/RADAR, then climb to 3000 on TEB R-278 to MORNIS INT and hold.

D-ATIS 114.2 132.85	NEW YORK APP CON 127.6 379.9	TETERBORO TOWER 119.5	GND CON 121.9	CLNC DEL 128.05	CPDLC
-------------------------------	--	--	-------------------------	---------------------------	-------



NE-2, 10 OCT 2019 to 07 NOV 2019

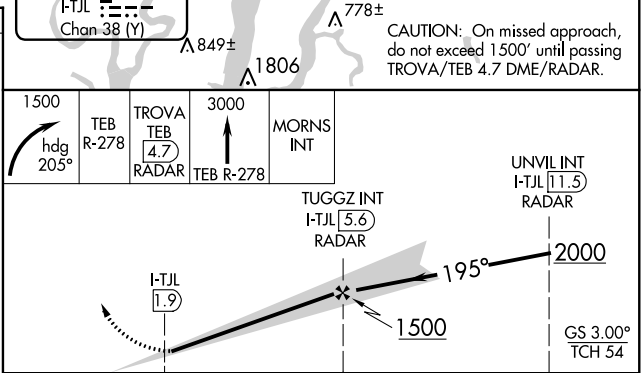
NE-2, 10 OCT 2019 to 07 NOV 2019

ELEV 8	D	TDZE 7
195° 4.5 NM from FAF		
△ 160	△ 66	△ 45±
△ 98	△ 61	△ 78
△ 131	△ 130	△ 131
△ 94	△ 94	△ 94

TDZ/CL Rwy 6 and 19
REIL Rwy 1, 6, 19 and 24
HIRL Rwy 1-19 and 6-24

FAF to MAP 3.7 NM

Knots	60	90	120	150	180
Min:Sec	3:42	2:28	1:51	1:29	1:14



CATEGORY	A	B	C	D
S-ILS 19	307-1 300 (300-1)			
S-LOC 19	580-1	573 (600-1)	580-1½ 573 (600-1½)	580-1¾ 573 (600-1¾)
C CIRCLING	760-1 751 (800-1)	760-1¼ 751 (800-1¼)	820-2½ 812 (900-2½)	1040-3 1032 (1100-3)