

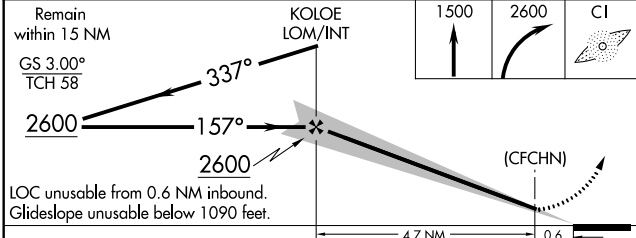
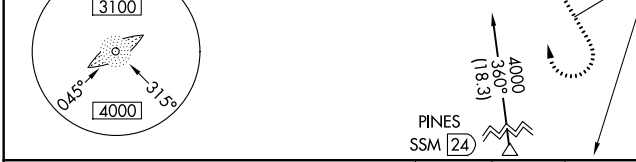
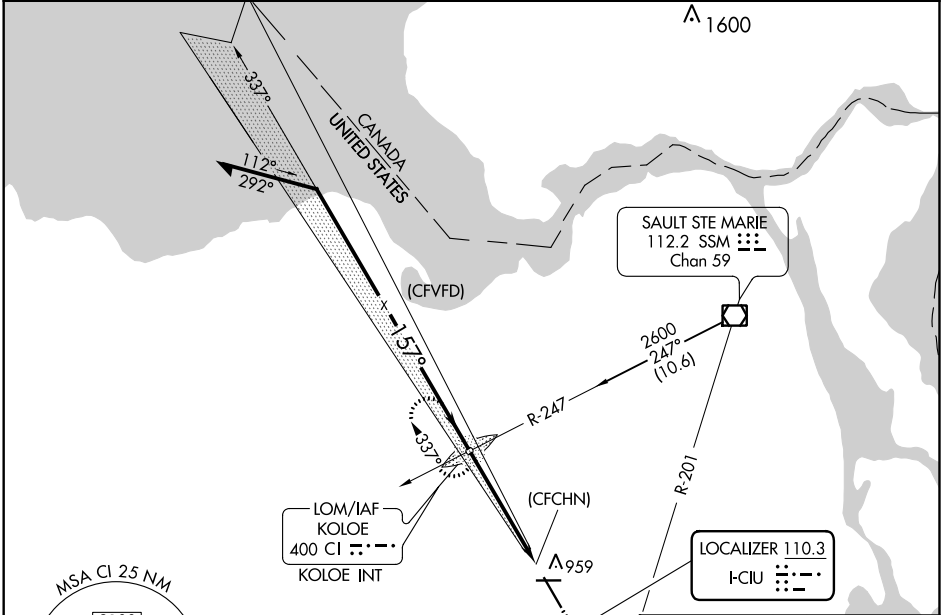
LOC I-CIU <b>110.3</b>	APP CRS <b>157°</b>	Rwy Idg <b>7203</b>
		TDZE <b>799</b>
		Apt Elev <b>799</b>

# ILS or LOC RWY 16

CHIPPEWA COUNTY INTL (CIU)

ADF required.	MALSR AS	MISSED APPROACH: Climb to 1500 then climbing right turn to 2600 direct KOLOE LOM/INT and hold. (TACAN aircraft climb to 5000 on heading 160° and SSM VOR/DME R-201 to PINES/SSM 24 DME and hold south, right turn, 021° inbound.)
▼ ▲NA Autopilot coupled approach NA below 1380.		

AWOS-3PT <b>127.575</b>	TORONTO CENTER <b>132.65 344.5</b>	UNICOM <b>123.0 (CTAF)</b>
----------------------------	---------------------------------------	-------------------------------



CATEGORY	A	B	C	D	E
S-ILS 16	1090-1/2 291 (300-1/2)				
S-LOC 16	1160-1/2	361 (400-1/2)	1160-5/8	361 (400-5/8)	
CIRCLING	1260-1	461 (500-1)	1260-1 1/2	1360-2	1380-2
			461 (500-1 1/2)	561 (600-2)	581 (600-2)

