

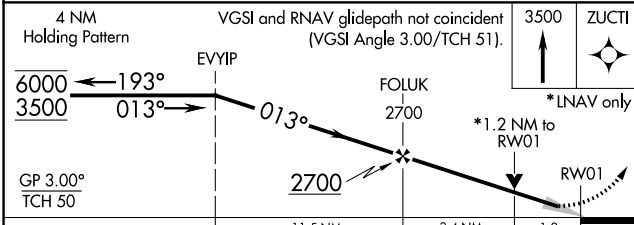
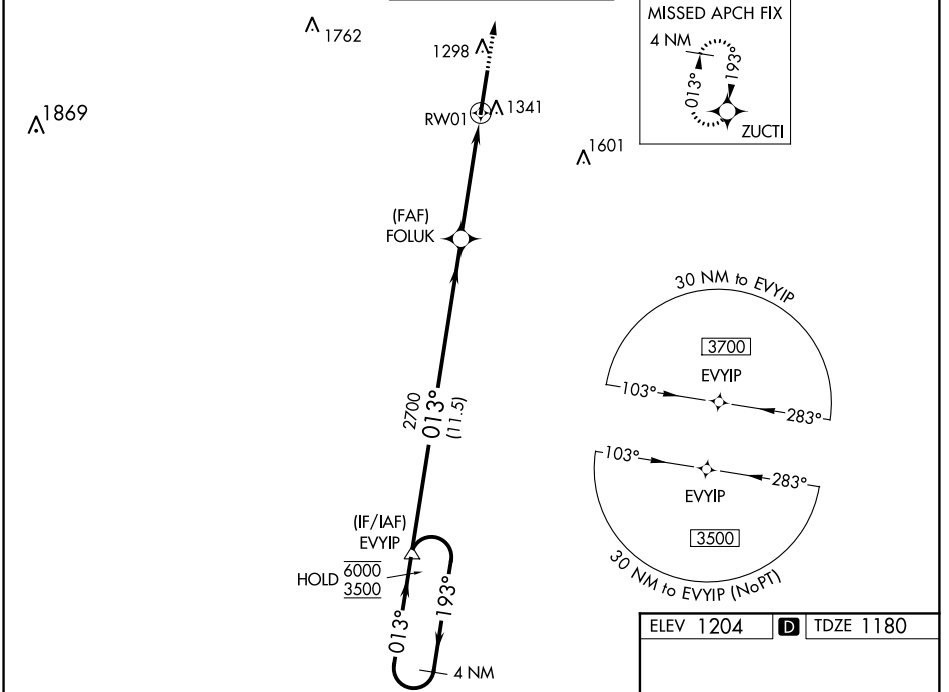
WAAS CH 97431 W01A	APP CRS 013°	Rwy Idg TDZE Apt Elev	9072 1180 1204
--	------------------------	-----------------------------	---

RNAV (GPS) RWY 1

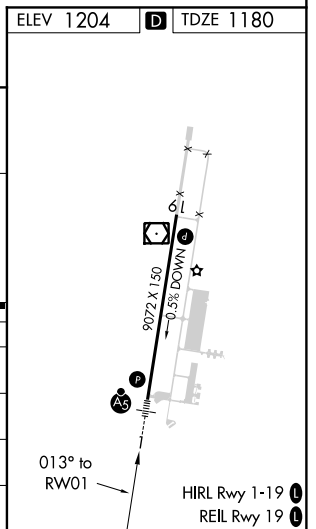
SAWYER INTL (SAW)

RNP APCH.	MALSR 	MISSED APPROACH: Climb to 3500 direct ZUCTI and hold.
<p>▼ For inop ALS, increase LNAV Cat C/D visibility to 1 1/8 SM. For uncompensated Baro-VNAV systems, LNAV/VNAV NA below -17°C or above 54°C.</p>		

AWOS-3 118.375	MINNEAPOLIS CENTER 119.1 290.2	SAWYER TOWER ★ 119.975 (CTAF) 0	GND CON 121.65	UNICOM 122.7
--------------------------	--	--	--------------------------	------------------------



CATEGORY	A	B	C	D
LPV DA		1380-1/2	200 (200-1/2)	
LNAV/VNAV DA		1503-1/2	323 (300-1/2)	
LNAV MDA	1600-1/2	420 (400-1/2)	1600-3/4	420 (400-3/4)
C CIRCLING	1680-1	476 (500-1)	1820-1 3/4 616 (700-1 3/4)	1820-2 616 (700-2)



EC-1, 10 OCT 2019 to 07 NOV 2019

EC-1, 10 OCT 2019 to 07 NOV 2019