

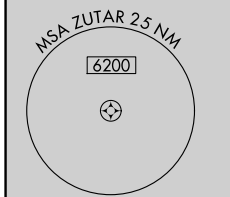
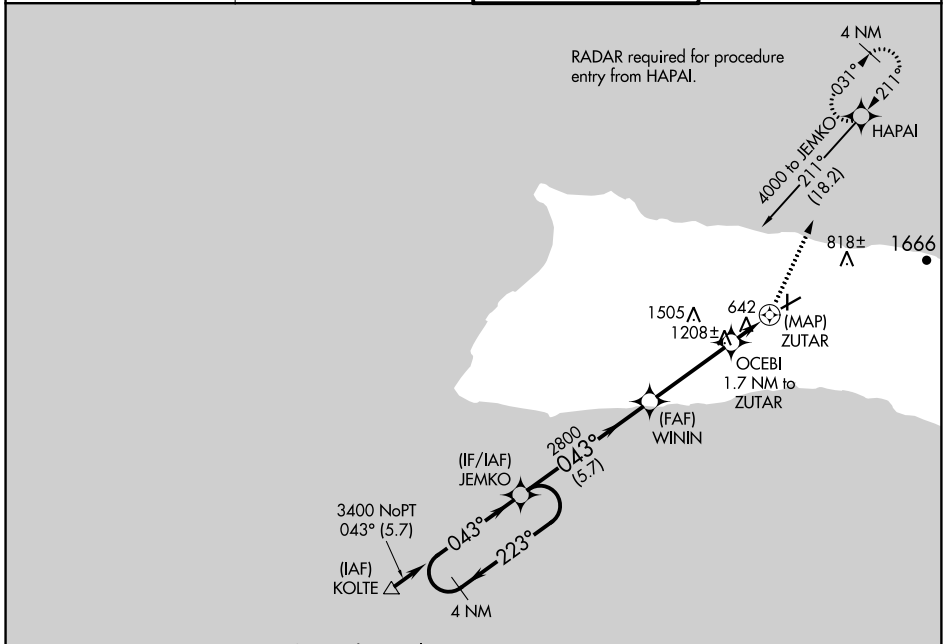
APP CRS 043°	Rwy Idg TDZE Apt Elev	N/A N/A 454
------------------------	-----------------------------	--

RNAV (GPS)-B

MOLOKAI (MKK)(PHMK)

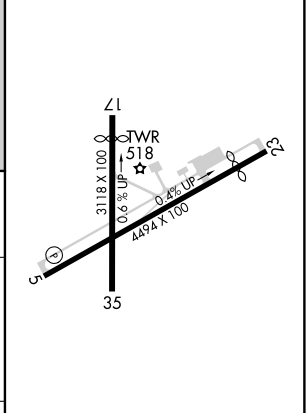
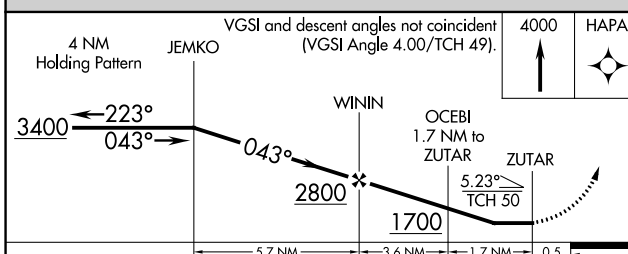
<p>▽ DME/DME RNP-0.3 NA. ▲ Circling to Rwy 5/17/23 NA at night. Helicopter visibility reduction below 1 SM not authorized.</p>	<p>MISSED APPROACH: Climb to 4000 direct HAPAI and hold, continue climb-in-hold to 4000.</p>
--	--

<p>ATIS 128.2</p>	<p>HCF CENTER 124.1 317.5</p>	<p>MOLOKAI TOWER ★ 125.7 (CTAF) 0 306.2</p>	<p>GND CON 121.9</p>
------------------------------	--	--	---------------------------------



Procedure NA for arrival at KOLTE on V2 northwest bound.

ELEV 454	D
----------	----------



CATEGORY	A	B	C	D
C CIRCLING	1000-1 546 (600-1)	1160-1 706 (800-1)	1680-3 1226 (1300-3)	1940-3 1486 (1500-3)

REIL Rwy 5 **0**
MIRL Rwy 5-23 and 17-35 **0**

PAC, 10 OCT 2019 to 05 DEC 2019

PAC, 10 OCT 2019 to 05 DEC 2019