

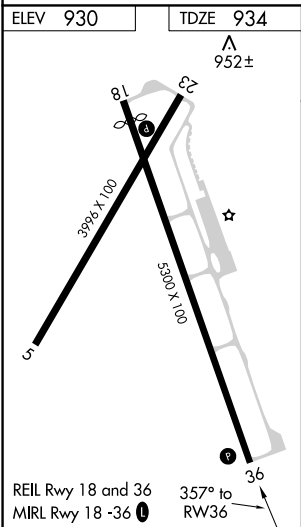
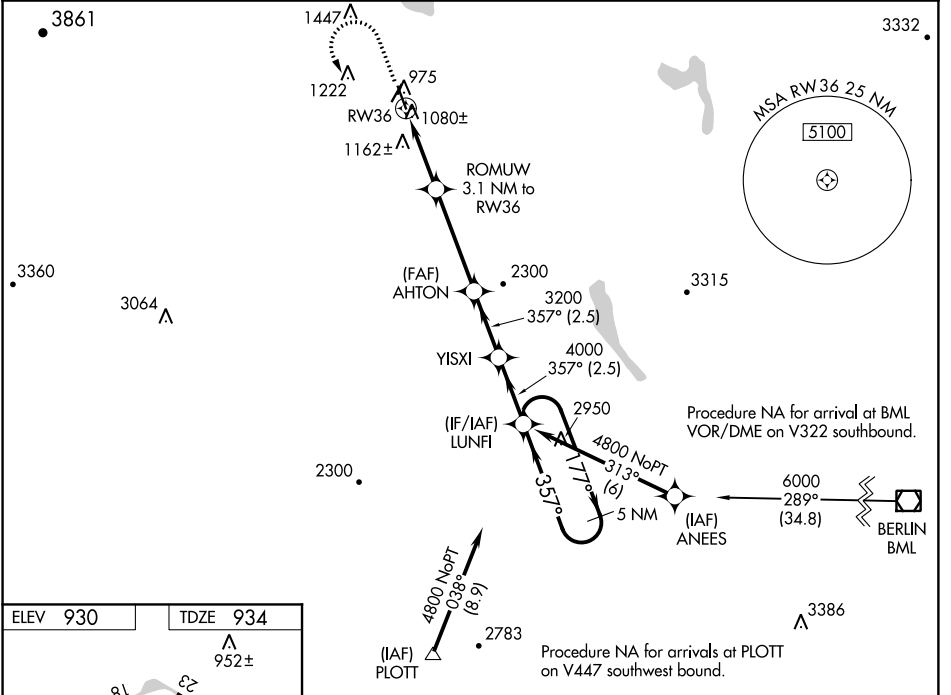
WAAS CH 82737 W36A	APP CRS 357°	Rwy Idg TDZE Apt Elev	5300 934 930
--	------------------------	-----------------------------	---

RNAV (GPS) RWY 36

NORTHEAST KINGDOM INTL (EFK)

<p>▽ DME/DME RNP-0.3 NA. ▲ Procedure NA at night. ❄ -30°C Rwy 36 helicopter visibility reduction below 1 SM NA.</p>	<p>MISSED APPROACH: Climb to 2300 then climbing left turn to 4800 direct LUNFI and hold, continue climb-in-hold to 4800.</p>
--	--

AWOS-3 118.275	BURLINGTON RADIO 122.5 255.4	UNICOM 122.8 (CTAF) 0
--------------------------	--	---------------------------------



2300	4800	LUNFI	VGSI and descent angles not coincident (VGSI Angle 3.00/TCH 44).	5 NM Holding Pattern																				
<table border="1"> <tr> <th>CATEGORY</th> <th>A</th> <th>B</th> <th>C</th> <th>D</th> </tr> <tr> <td>LP MDA</td> <td>1340-1</td> <td>406 (500-1)</td> <td>1340-1½ 406 (500-1½)</td> <td>NA</td> </tr> <tr> <td>LNAV MDA</td> <td>1420-1</td> <td>486 (500-1)</td> <td>1420-1¾ 486 (500-1¾)</td> <td>NA</td> </tr> <tr> <td>CIRCLING</td> <td>1440-1 510 (600-1)</td> <td>1600-1 670 (700-1)</td> <td>2020-3 1090 (1100-3)</td> <td>NA</td> </tr> </table>	CATEGORY	A	B	C	D	LP MDA	1340-1	406 (500-1)	1340-1½ 406 (500-1½)	NA	LNAV MDA	1420-1	486 (500-1)	1420-1¾ 486 (500-1¾)	NA	CIRCLING	1440-1 510 (600-1)	1600-1 670 (700-1)	2020-3 1090 (1100-3)	NA				
CATEGORY	A	B	C	D																				
LP MDA	1340-1	406 (500-1)	1340-1½ 406 (500-1½)	NA																				
LNAV MDA	1420-1	486 (500-1)	1420-1¾ 486 (500-1¾)	NA																				
CIRCLING	1440-1 510 (600-1)	1600-1 670 (700-1)	2020-3 1090 (1100-3)	NA																				

NE-1, 10 OCT 2019 to 07 NOV 2019

NE-1, 10 OCT 2019 to 07 NOV 2019