

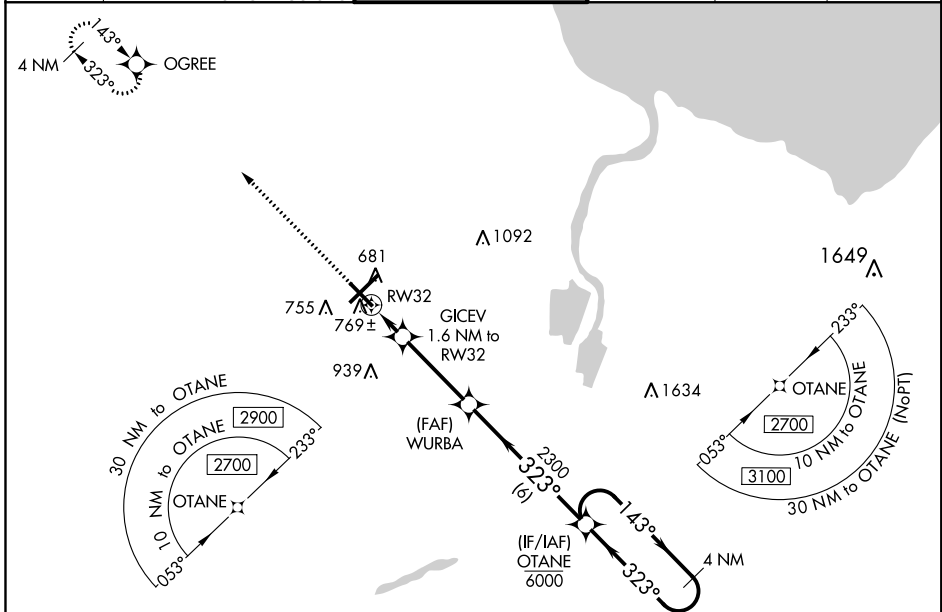
WAAS CH 78011 W32A	APP CRS 323°	Rwy Idg TDZE Apt Elev	6399 665 668
---------------------------------	------------------------	-----------------------------	---

RNAV (GPS) RWY 32

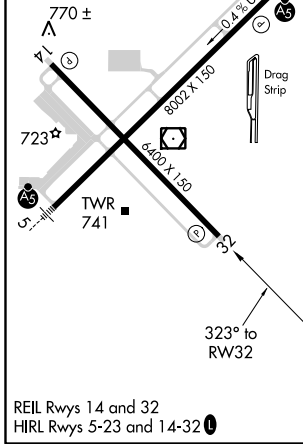
MBS INTL (MBS)

RNP APCH.		MISSED APPROACH: Climb to 2300 direct OGREE and hold.			
For uncompensated Baro-VNAV systems, LNAV/VNAV NA below -18°C or above 54°C.					

ATIS 125.925	GREAT LAKES APP CON ★ 050°-229° 120.95 235.625 230°-049° 126.45 235.625	SAGINAW TOWER ★ 120.1 (CTAF) 0 257.7	GND CON 121.7	CLNC DEL 121.85	UNICOM 122.95
------------------------	---	---	-------------------------	---------------------------	-------------------------



ELEV 668	D	TDZE 665
----------	----------	----------



	↑ 2300 OGREE	OTANE 4 NM Holding Pattern	
*LNAV only.	GICEV 1.6 NM to RW32	WURBA 2300	OTANE 6000 / 2700
	*1 NM to RW32	*1220	GP 3.00° TCH 50
	1 NM	0.6 NM	3.4 NM
	1 NM	0.6 NM	6 NM
CATEGORY	A	B	C
LPV DA		865-3/4	200 (200-3/4)
LNAV/VNAV DA		950-7/8	285 (300-7/8)
LNAV MDA		1020-1	355 (400-1)
C CIRCLING	1080-1 412 (500-1)	1120-1 452 (500-1)	1240-1½ 572 (600-1½)
			1240-2 572 (600-2)

EC-1, 10 OCT 2019 to 07 NOV 2019

EC-1, 10 OCT 2019 to 07 NOV 2019