

FORT RUCKER, ALABAMA

VOR RWY 6

VOR/DME OZR 111.2 Chan 49	APCH CRS 056°	Rwy ldg TDZE 298 Arpt Elev 301
---	-------------------------	--

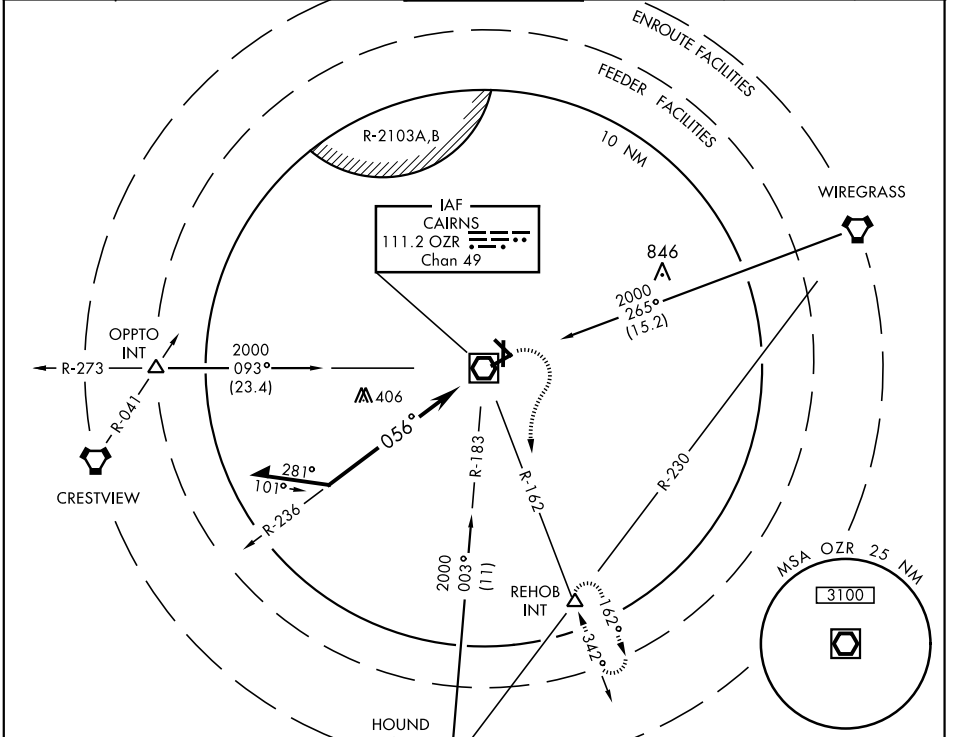
AL-577 [USA]

CAIRNS AAF (KOZR)

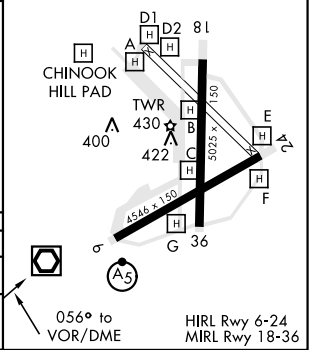
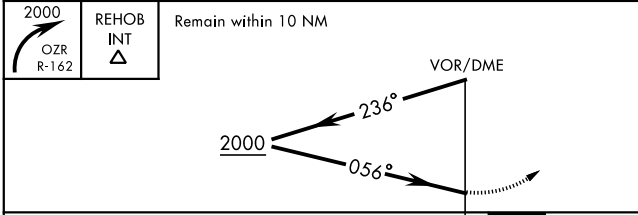
▼ Visibility reduction by helicopters NA.
 * When ALS inop, increase CAT AB RVR to 5000, vis to 1 mile, CAT CD RVR to 6000 and vis to 1½ miles.

MALS R
 MISSED APPROACH: Climbing right turn to 2000 via OZR VOR/DME R-162 to REHOB INT and hold; or when directed by ATC, climbing left turn to 2000 heading 290° within 10 NM (RADAR required).

CAIRNS APP CON	CAIRNS TOWER *	GND CON	CLNC DEL	PAR	
ATIS 111.2 316.15	021°-120° 125.4 327.125 121°-219° 133.75 270.35 220°-340° 133.45 239.275 341°-020° 121.1 319.25	135.2 (CTAF) 248.55	121.9 288.25	118.075 380.1	



ELEV	301	TDZE	298
------	-----	------	-----



CATEGORY	A	B	C	D
S-6 *	740/40 442 (500-¾)			
CIRCLING	740-1 439 (500-1)	780-1 479 (500-1)	860-1½ 559 (600-1½)	900-2 599 (600-2)

FORT RUCKER, ALABAMA
 Amdt 15B 13SEP18

31° 16'N-85°43'W

CAIRNS AAF (KOZR)

VOR RWY 6

SE-4, 10 OCT 2019 to 07 NOV 2019

SE-4, 10 OCT 2019 to 07 NOV 2019