

FORT RUCKER, ALABAMA

ILS or LOC RWY 6

LOC I-OZR 109.7 Chan 34	APCH CRS 064°	Rwy Idg TDZE Arpt Elev 4546 298 301
---	-------------------------	---

AL-577 [USA]

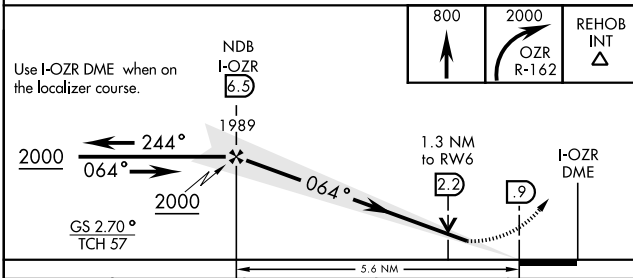
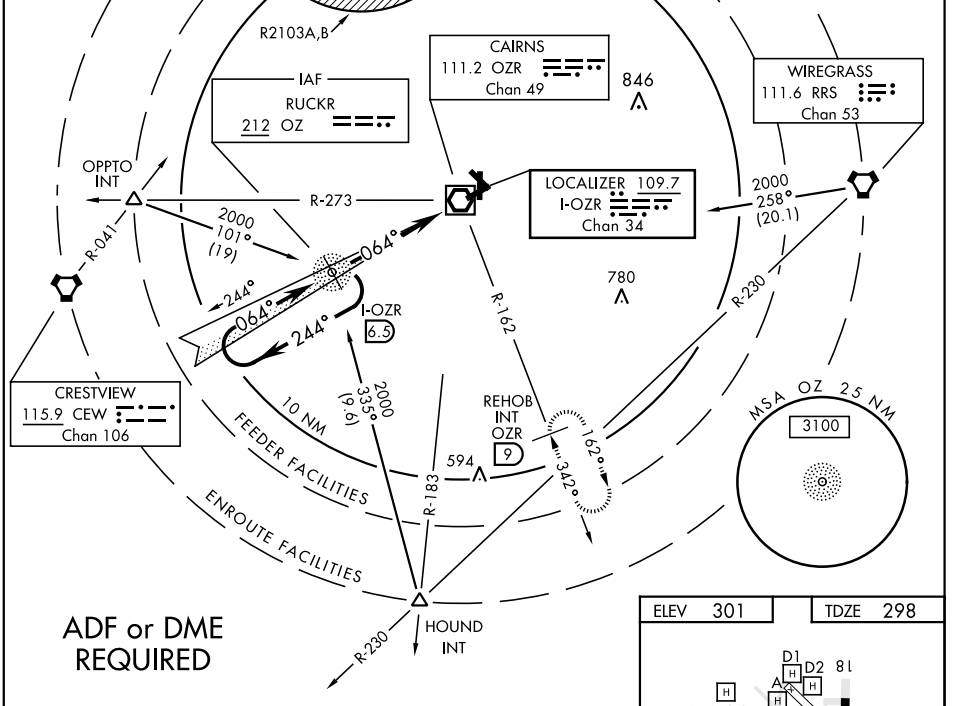
CAIRNS AAF (KOZR)

▼ * When ALS inop, increase CAT ABC vis to 1 mile, CAT D RVR to 60 and vis to 1 1/4 miles.



MISSED APPROACH: Climb to 800 then climbing right turn to 2000 via OZR VOR/DME R-162 to REHOB INT (OZR 9 DME) and hold; or when directed by ATIS, climb to 800 then climbing left turn to 2000 heading 290° within 10 NM (RADAR required).

ATIS 111.2 316.15	CAIRNS APP CON 021°-120° 125.4 327.125 121°-219° 133.75 270.35 220°-340° 133.45 239.275 341°-020° 121.1 319.25	CAIRNS TOWER * 135.2 (CTAF) 248.55	GND CON 121.9 288.25	CLNC DEL 118.075 380.1	PAR
---------------------------------------	--	--	--	--	-----



ELEV	301	TDZE	298
------	-----	------	-----

FAF to MAP 5.6 NM					
Knots	60	90	120	150	180
Min:Sec	5:36	3:44	2:48	2:14	1:52

FORT RUCKER, ALABAMA
Amdt 2A 13SEP18

31° 16'N-85° 43'W

CAIRNS AAF (KOZR)

ILS or LOC RWY 6

SE-4, 10 OCT 2019 to 07 NOV 2019

SE-4, 10 OCT 2019 to 07 NOV 2019