

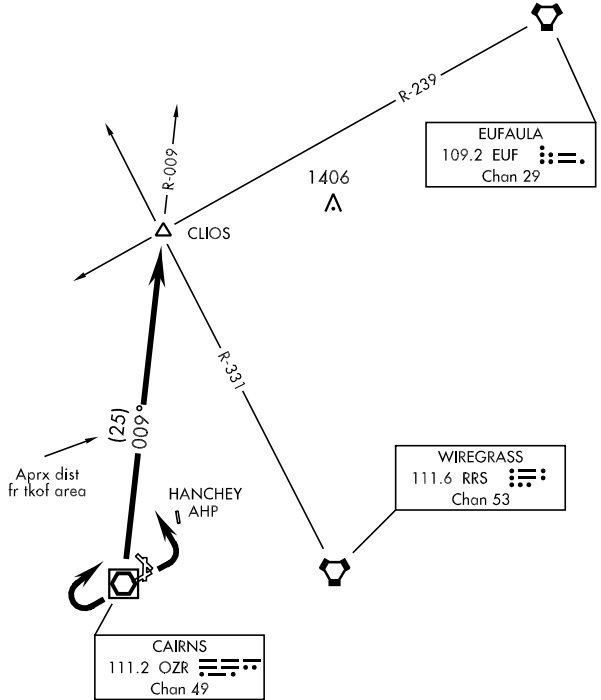
# CLIOS-TWO DEPARTURE (CLIOS2•CLIOS)

CAIRNS AAF (KOZR)  
FORT RUCKER, ALABAMA

ATIS 111.2 316.15  
CLNC DEL  
118.075 380.1  
GND CON  
121.9 288.25  
CAIRNS TOWER ★  
135.2 (CTAF) 248.55  
DEP CON  
121.1 319.25  
JACKSONVILLE CENTER  
120.2 346.4

SL-577 [USA]

## RADAR REQUIRED



SE-4, 10 OCT 2019 to 07 NOV 2019

SE-4, 10 OCT 2019 to 07 NOV 2019

## DEPARTURE ROUTE DESCRIPTION

TAKE-OFF RWY 6 or RWY 18: Climbing left turn heading 330° ....

TAKE-OFF RWY 24: Climbing right turn heading 050° ....

TAKE-OFF RWY 36: Climb on heading 350° ....

TAKE-OFF PAD D1: Climb on heading 350° ....

TAKE-OFF PAD D2: Climb on heading 350° ....

Maintain 2000, expect clearance to requested altitude/flight level ten (10) minutes after departure.

.... Intercept OZR VOR/DME R-009 to CLIOS INT.