


WAAS CH <b>65912</b> <b>W13A</b>	APP CRS <b>131°</b>	Rwy Idg <b>6724</b> TDZE <b>240</b> Apt Elev <b>240</b>
--	------------------------	---

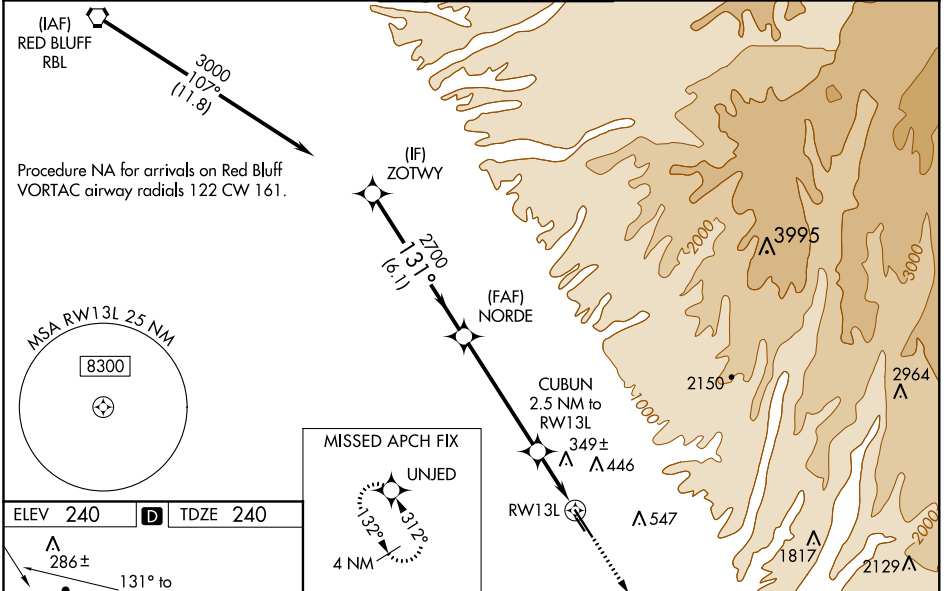
# RNAV (GPS) RWY 13L

CHICO MUNI (CIC)

**NA** Inoperative table does not apply to LPV and LNAV Cats A/B/C.  
 For inoperative MALSRS, increase LNAV Cat D visibility to 1/4.  
 Circling NA east of Rwy 13L/31R. Baro-VNAV NA when using Red Bluff altimeter setting. For uncompensated Baro-VNAV systems, LNAV/VNAV NA below -15°C (5°F) or above 49°C (120°F). DME/DME RNP-0.3 NA. Visibility reduction by helicopters NA. When local altimeter setting not received, use Red Bluff Muni altimeter setting and increase all DA 81 feet, and all MDA 100 feet, increase LNAV/VNAV all Cats visibility 1/4 mile. For inoperative MALSRS when using Red Bluff altimeter setting, LNAV Cats A/B inoperative table does not apply, increase Cat C visibility 1/4 mile.

**MALSRS**  MISSED APPROACH: Climb to 3600 direct UNJED and hold, continue climb-in-hold to 3600.

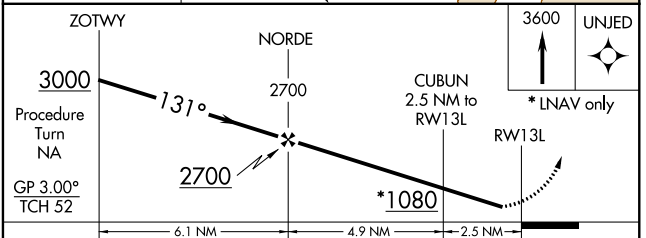
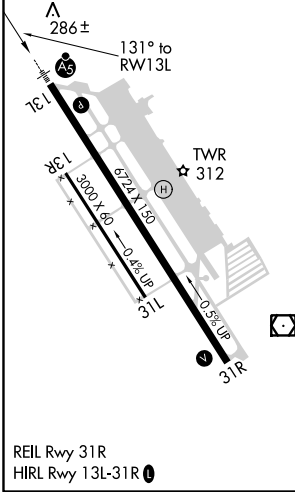
ATIS <b>119.675</b>	OAKLAND CENTER <b>132.2 350.3</b>	CHICO TOWER ★ <b>121.0 (CTAF) 239.3</b>	GND CON <b>121.9</b>	UNICOM <b>122.95</b>
------------------------	--------------------------------------	--	-------------------------	-------------------------



SW-2, 10 OCT 2019 to 07 NOV 2019

SW-2, 10 OCT 2019 to 07 NOV 2019

ELEV <b>240</b>	<b>D</b>	TDZE <b>240</b>
-----------------	----------	-----------------



CATEGORY	A	B	C	D
LPV DA		536-1	296 (300-1)	
LNAV/VNAV DA		648-1	408 (500-1)	
LNAV MDA		600-1	360 (400-1)	
CIRCLING	640-1 400 (500-1)	700-1 460 (500-1)	700-1½ 460 (500-1½)	800-2 560 (600-2)