

LOC I-CIC 111.3	APP CRS 131°	Rwy Idg 6724
		TDZE 240
		Apt Elev 240

ILS or LOC/DME RWY 13L

CHICO MUNI (CIC)

NA Circling NA east of Rwy 13L/31R. DME from CIC VOR/DME. Simultaneous reception of I-CIC and CIC DME required. When local altimeter setting not received, use Red Bluff Muni altimeter setting and increase all DA 81 feet and all MDA 100 feet. Increase S-LOC 13L Cat. C and D visibility 1/4 mile. For inoperative MALSRS, increase S-LOC Cat. D visibility 1/4 mile. For inoperative MALSRS when using Red Bluff Muni altimeter setting, increase S-ILS 13L all Cats. visibility 1/2 mile.

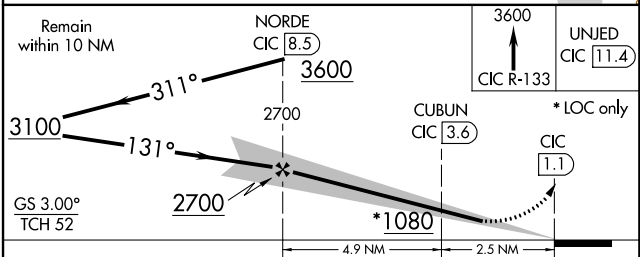
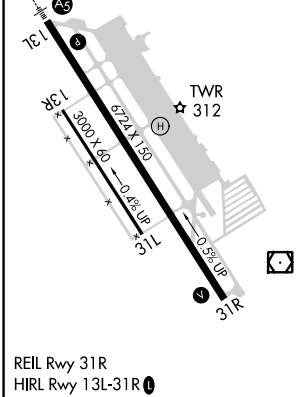
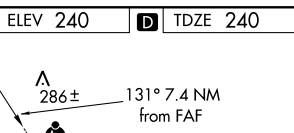
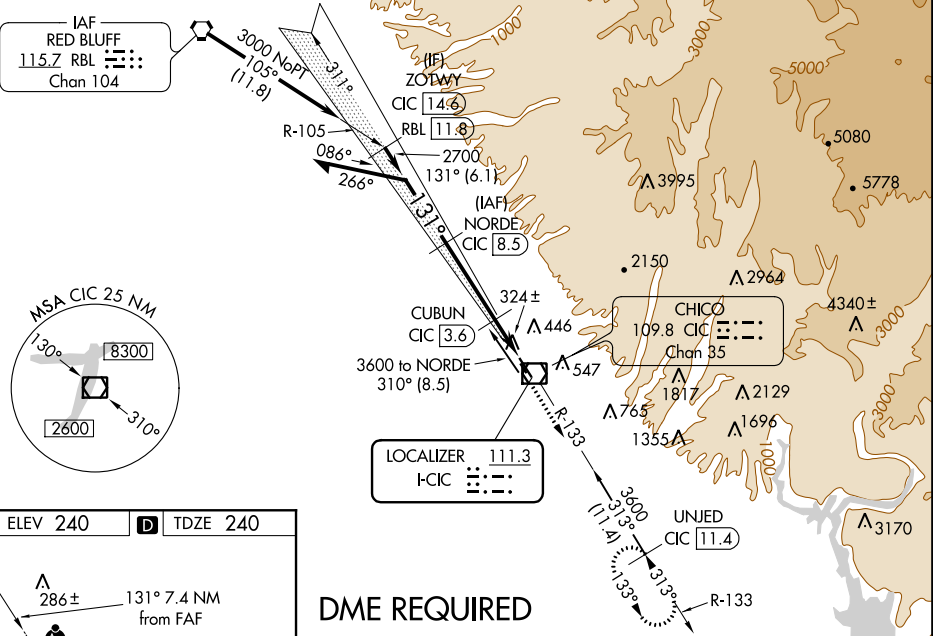
MALSRS



MISSED APPROACH: Climb to 3600 via CIC VOR/DME R-133 to UNJED/CIC 11.4 DME and hold, continue climb-in-hold to 3600.

ATIS 119.675	OAKLAND CENTER 132.2 350.3	CHICO TOWER ★ 121.0 (CTAF) 0 239.3	GND CON 121.9	UNICOM 122.95
------------------------	--------------------------------------	--	-------------------------	-------------------------

Procedure NA for arrivals on Red Bluff VORTAC airway radials 122 CW 161.



CATEGORY	A	B	C	D
S-ILS 13L		440-1/2	200 (200-1/2)	
S-LOC 13L		580-1/2	340 (400-1/2)	580-3/4 340 (400-3/4)
CIRCLING	640-1 400 (400-1)	700-1 460 (500-1)	700-1/2 460 (500-1/2)	800-2 560 (600-2)

SW-2, 10 OCT 2019 to 07 NOV 2019

SW-2, 10 OCT 2019 to 07 NOV 2019