

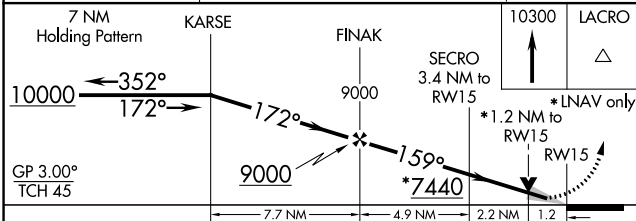
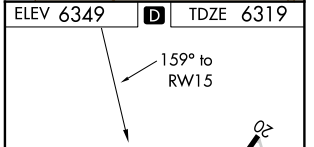
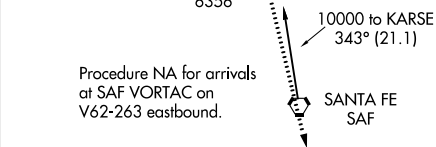
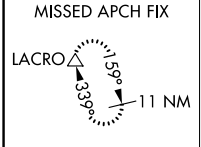
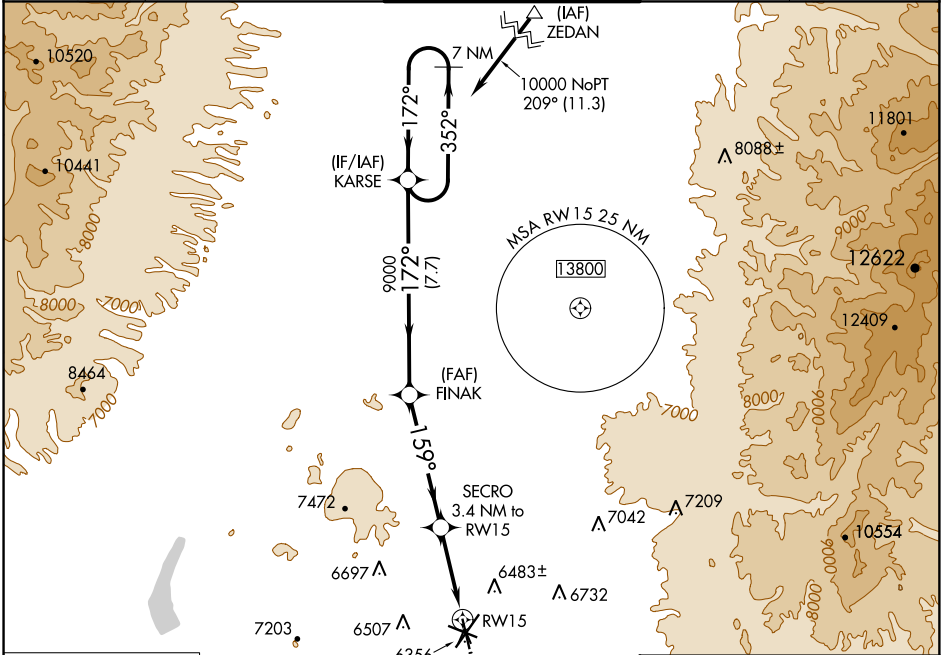
WAAS CH <b>87039</b> W15A	APP CRS <b>159°</b>	Rwy Idg TDZE Apt Elev	<b>5221</b> <b>6319</b> <b>6349</b>
---------------------------------	------------------------	-----------------------------	---

# RNAV (GPS) RWY 15

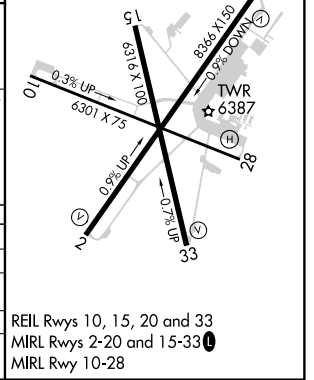
SANTA FE MUNI (SAF)

**⚠** For uncompensated Baro-VNAV systems, LNAV/VNAV NA below -18°C (0°F) or above 47°C (117°F). DME/DME RNP-0.3 NA. **MISSED APPROACH:** Climb to 10300 direct LACRO and hold, continue climb-in-hold to 10300.

ATIS <b>128.55</b>	ALBUQUERQUE CENTER <b>132.8 346.35</b>	SANTA FE TOWER ★ <b>119.5 (CTAF) 239.3</b>	GND CON <b>121.7</b>	UNICOM <b>122.95</b>
-----------------------	---	---	-------------------------	-------------------------



CATEGORY	A	B	C	D
LPV DA		6569-3/4	250 (300-3/4)	
LNAV/VNAV DA		6569-3/4	250 (300-3/4)	
LNAV MDA	6740-1	421 (400-1)	6740-1 1/4	421 (400-1 1/4)
CIRCLING	6800-1	6920-1	7340-3	7660-3
	451 (500-1)	571 (600-1)	991 (1000-3)	1311 (1400-3)



SW-1, 10 OCT 2019 to 07 NOV 2019

SW-1, 10 OCT 2019 to 07 NOV 2019