

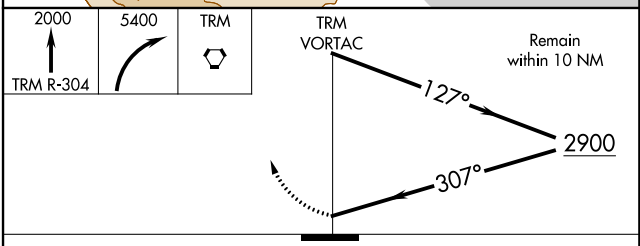
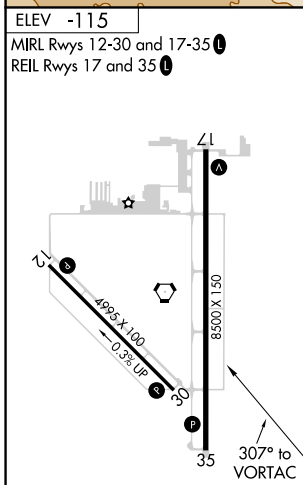
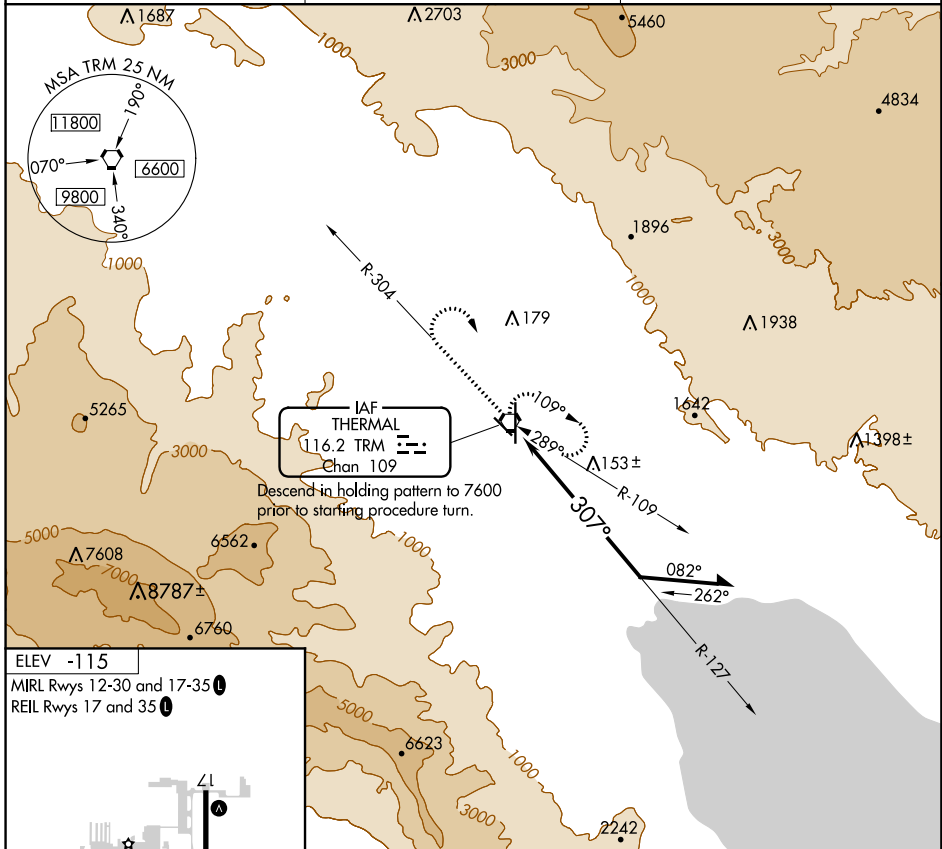
VORTAC TRM 116.2 Chan 109	APP CRS 307°	Rwy Idg TDZE Apt Elev	N/A N/A -115
---	------------------------	-----------------------------	---

VOR-A

JACQUELINE COCHRAN RGNL (TRM)

MISSED APPROACH: Climb to 2000 on TRM VORTAC R-304 then climbing right turn to 5400 direct TRM VORTAC and hold, continue climb-in-hold to 5400.

ASOS 118.325	SOCAL APP CON ★ 135.275 251.1	UNICOM 123.0 (CTAF) 0
------------------------	---	--



CATEGORY	A	B	C	D
C CIRCLING	1400-1¼ 1515 (1600-1¼)	1400-1½ 1515 (1600-1½)	1400-3	1515 (1600-3)

SW-3, 10 OCT 2019 to 07 NOV 2019

SW-3, 10 OCT 2019 to 07 NOV 2019