

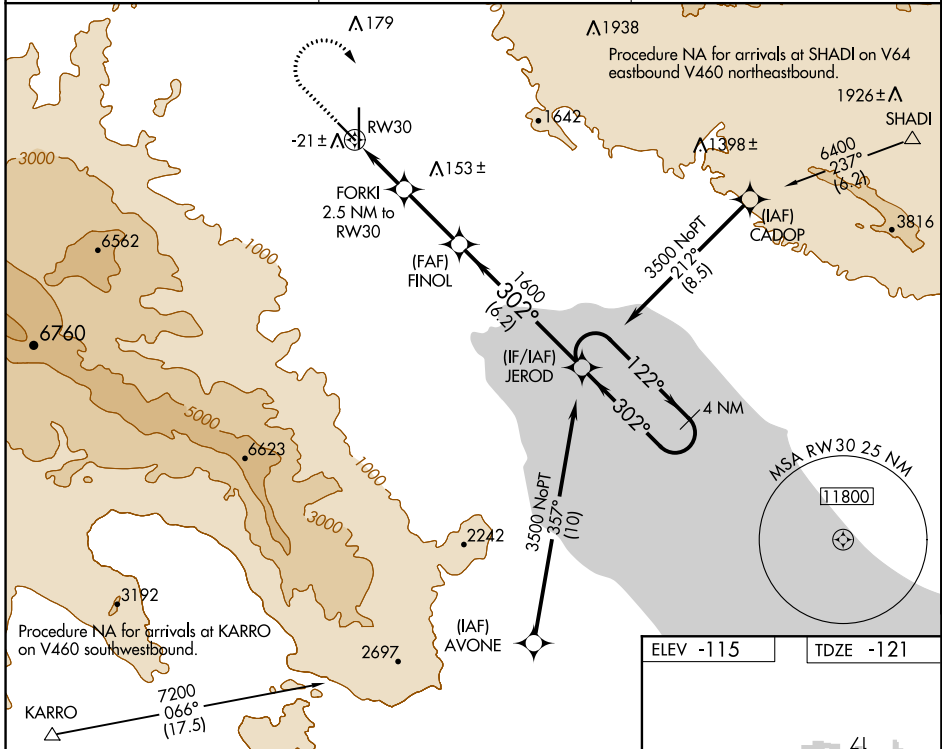
WAAS CH <b>77941</b> <b>W30A</b>	APP CRS <b>302°</b>	Rwy Idg TDZE Apt Elev	<b>4995</b> <b>-121</b> <b>-115</b>
--	------------------------	-----------------------------	---

# RNAV (GPS) RWY 30

JACQUELINE COCHRAN RGNL (TRM)

RNP APCH. ▼ ▲ Rwy 30 helicopter visibility reduction below 3/4 SM NA.	MISSED APPROACH: (Do not exceed 230K until JEROD) Climb to 1200 then climbing right turn to 3500 direct JEROD and hold.
---	--

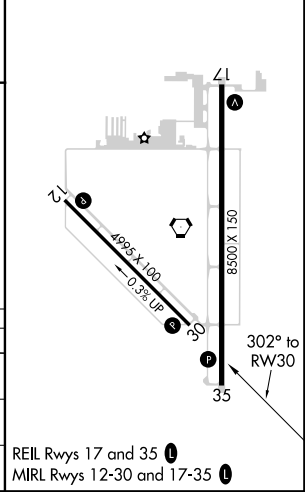
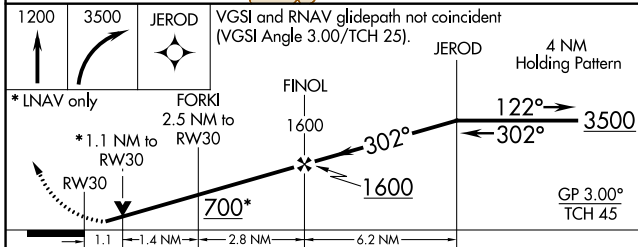
ASOS <b>118.325</b>	SOCAL APP CON * <b>135.275 251.1</b>	UNICOM <b>123.0 (CTAF) 0</b>
------------------------	---	---------------------------------



SW-3, 10 OCT 2019 to 07 NOV 2019

SW-3, 10 OCT 2019 to 07 NOV 2019

ELEV -115	TDZE -121
-----------	-----------



CATEGORY	A	B	C	D
LPV DA	129-3/4 250 (300-3/4)			
RNAV MDA	260-1 381 (400-1)	260-1 1/8 381 (400-1 1/8)		
CIRCLING	320-1 435 (500-1)	340-1 455 (500-1)	460-1 1/2 575 (600-1 1/2)	780-3 895 (900-3)

REIL Rwy 17 and 35 0  
MIRL Rwy 12-30 and 17-35 0