

EDWARDS, CALIFORNIA

VOR/DME or TACAN RWY 5R

VORTAC EDW 116.4 Chan 111	APCH CRS 046°	Rwy Idg 15,024 TDZE 2303 Arprt Elev 2311
---	-------------------------	---

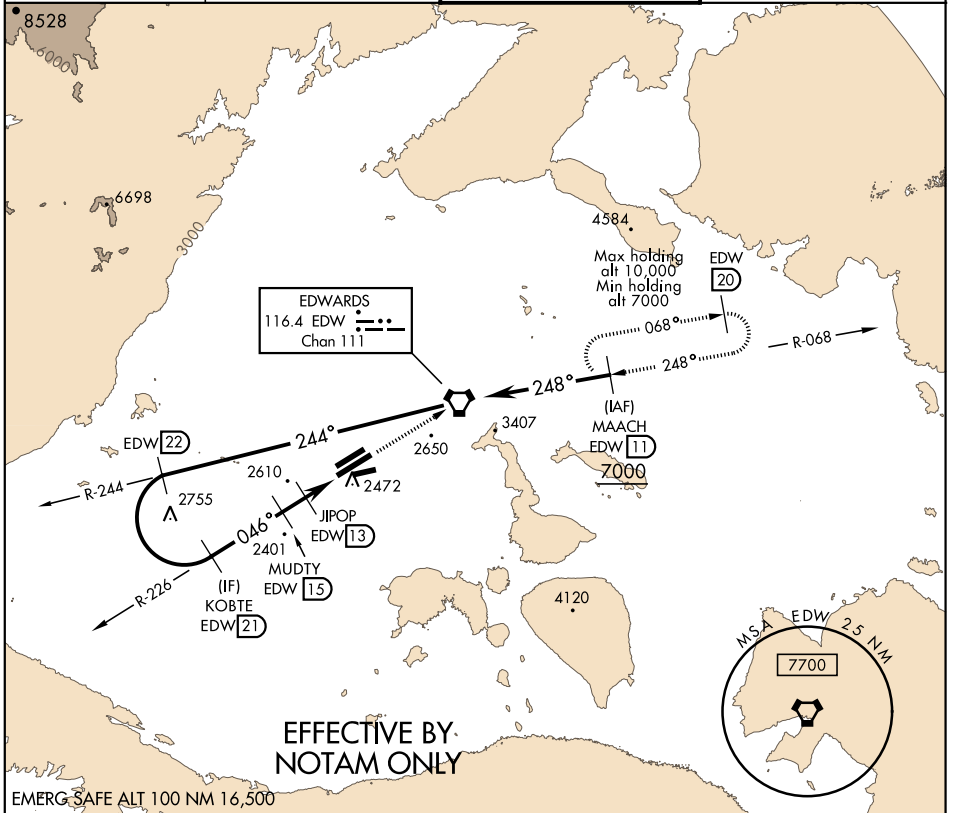
AL-500 [USAF]

EDWARDS AFB (KEDW)

⚠ * Circling not authorized NW of Rwy 5L-23R.
 Circling not authorized at night to Rwy 5L-23R.

MISSED APPROACH: Track EDW VORTAC R-226 to EDW.
 Intercept EDW R-068 to MAACH and hold. Maintain 7000.
 Missed approach requires use of RNAV or ATC radar monitoring.

ATIS ★ 127.425 269.9	SPORT APP CON 132.75 343.7	EDWARDS TOWER ★ 120.7 318.1	GND CON 121.8 225.4
--------------------------------	--------------------------------------	---------------------------------------	-------------------------------



EFFECTIVE BY NOTAM ONLY

EMERG SAFE ALT 100 NM 16,500

R-244 [22] 5700	VORTAC	7000 EDW R-226	EDW ELEV 2311	TDZE 2303	
		Remain within 26 NM			
CATEGORY	A	B	C	D	E
S-5R	2820-1 517 (600-1)		2820-1 $\frac{3}{8}$	517	(600-1 $\frac{3}{8}$)
C CIRCLING*	2880-1 569 (600-1)		2880-1 $\frac{1}{2}$ 569 (600-1 $\frac{1}{2}$)	2880-2	569 (600-2)

EDWARDS, CALIFORNIA
 Orig 10OCT19

34°55'N-117°53'W

EDWARDS AFB (KEDW)

VOR/DME or TACAN RWY 5R

SW-3, 10 OCT 2019 to 07 NOV 2019

SW-3, 10 OCT 2019 to 07 NOV 2019