

EDWARDS, CALIFORNIA

# VOR/DME or TACAN RWY 5L

VORTAC EDW <b>116.4</b> Chan <b>111</b>	APCH CRS <b>049°</b>	Rwy Idg <b>12,000</b> TDZE <b>2311</b> Arprt Elev <b>2311</b>
---	-------------------------	---

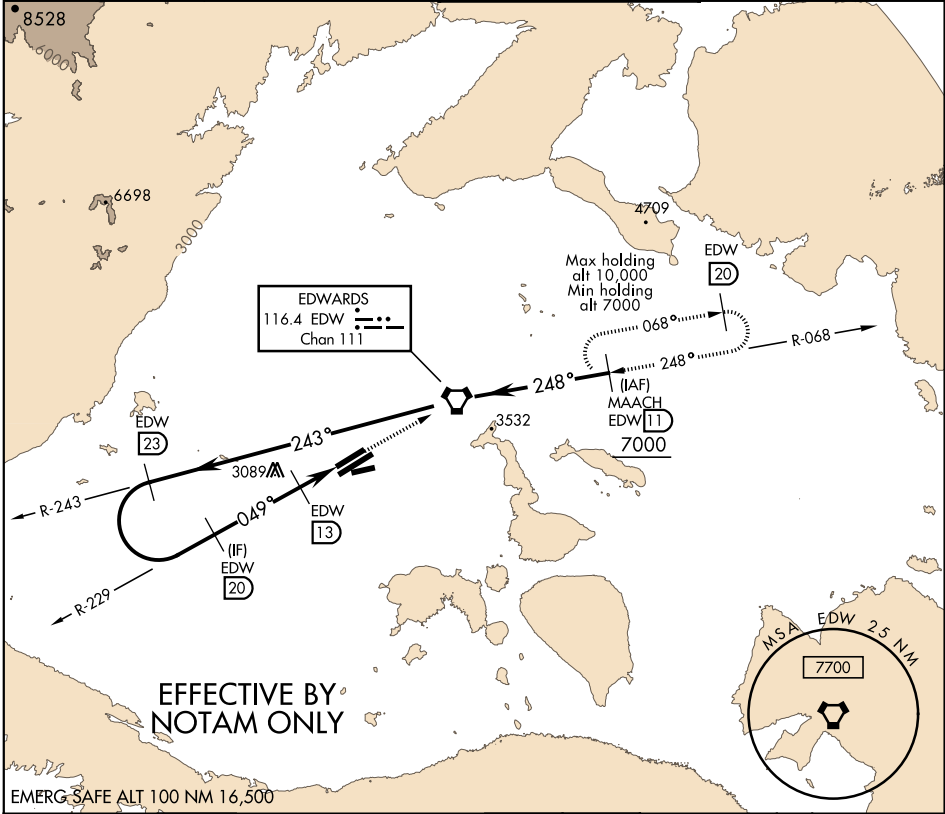
AL-500 [USAF]

EDWARDS AFB (KEDW)

▼ \*Circling not authorized NW of Rwy 5L-23R.  
Circling not authorized at night to Rwy 5L-23R.

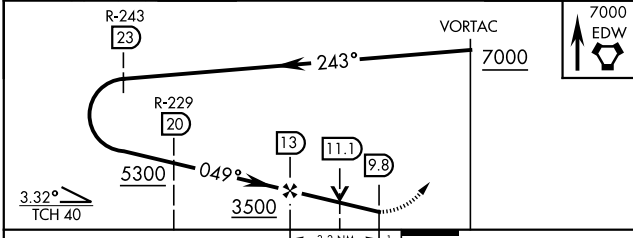
MISSED APPROACH: Proceed direct EDW VORTAC, then intercept EDW R-068 to MAACH and hold. Maintain 7000. Missed approach requires use of RNAV or ATC RADAR monitoring.

ATIS ★ <b>127.425 269.9</b>	SPORT APP CON <b>132.75 343.7</b>	EDWARDS TOWER ★ <b>120.7 318.1</b>	GND CON <b>121.8 225.4</b>
--------------------------------	--------------------------------------	---------------------------------------	-------------------------------



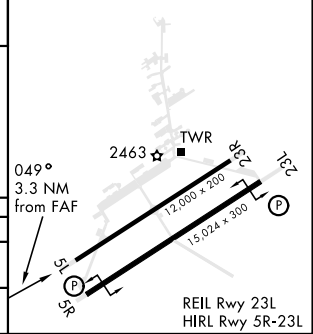
EFFECTIVE BY NOTAM ONLY

EMERG SAFE ALT 100 NM 16,500



ELEV 2311	TDZE 2311
-----------	-----------

CATEGORY	A	B	C	D	E	
S-5L	2840-1	529 (600-1)	2840-1½	529	(600-1½)	
☑ CIRCLING*	2880-1	569 (600-1)	2880-1½	569 (600-1½)	2880-2	569 (600-2)



EDWARDS, CALIFORNIA

34°55'N-117°53'W

EDWARDS AFB (KEDW)

Orig 10OCT19

# VOR/DME or TACAN RWY 5L

SW-3, 10 OCT 2019 to 07 NOV 2019

SW-3, 10 OCT 2019 to 07 NOV 2019