

EDWARDS, CALIFORNIA

ILS or LOC/DME RWY 22L

LOC I-EDW 110.1	APCH CRS 223°	Rwy Idg 15,024 TDZE 2286 Arpt Elev 2311
---------------------------	-------------------------	--

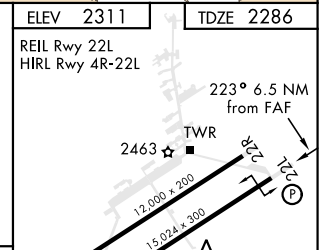
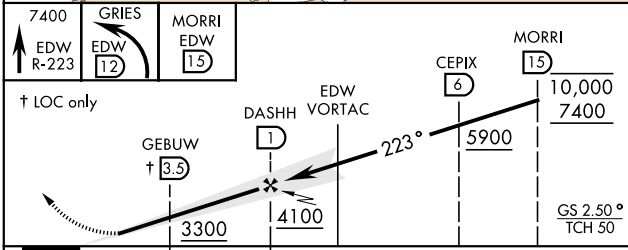
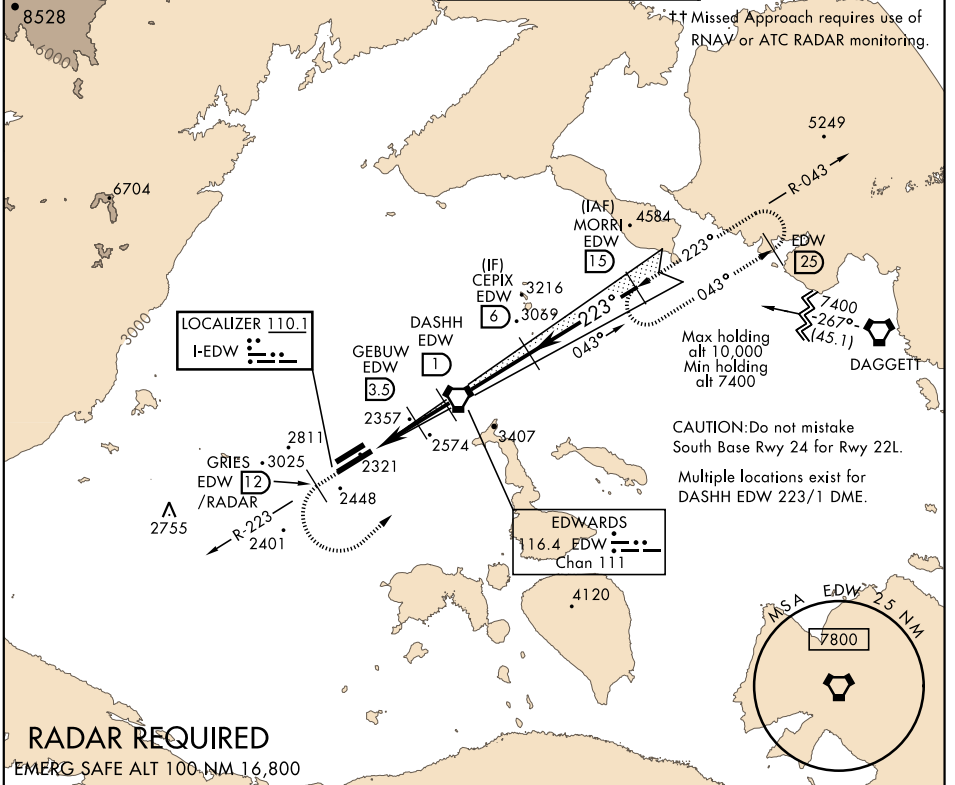
AL-500 [USAF]

EDWARDS AFB (KEDW)

▼ * Circling not authorized NW of Rwy 4L-22R.
Circling not authorized at night to Rwy 4L-22R.

↑↑ MISSED APPROACH: Climb to 7400. Track EDW R-223 outbound to GRIES, then turn left direct MORRI and hold.

ATIS ★ 127.425	SPORT APP CON 132.75 343.7	EDWARDS TOWER ★ 120.7 318.1	GND CON 121.8 225.4
--------------------------	--------------------------------------	---------------------------------------	-------------------------------



CATEGORY	A	B	C	D	E
S-ILS 22L		2486-¾	200	(200-¾)	
S-LOC 22L		2540-1	254	(300-1)	
CIRCLING *	2880-1 569 (600-1)	2880-1½ 569(600-1½)	2880-2 569 (600-2)		

FAF to MAP 6.5 NM					
Knots	60	90	120	150	180
Min:Sec	6:30	4:20	3:15	2:36	2:10

EDWARDS, CALIFORNIA
Amdt 4 25APR19

34°55'N-117°53'W

EDWARDS AFB (KEDW)

ILS or LOC/DME RWY 22L

SW-3, 10 OCT 2019 to 07 NOV 2019

SW-3, 10 OCT 2019 to 07 NOV 2019