

EDWARDS, CALIFORNIA

HI-ILS or LOC/DME Z RWY 23L

LOC I-EDW 110.1	APCH CRS 226°	Rwy ldg TDZE Arprt Elev	15,024 2286 2311
---------------------------	-------------------------	-------------------------------	---

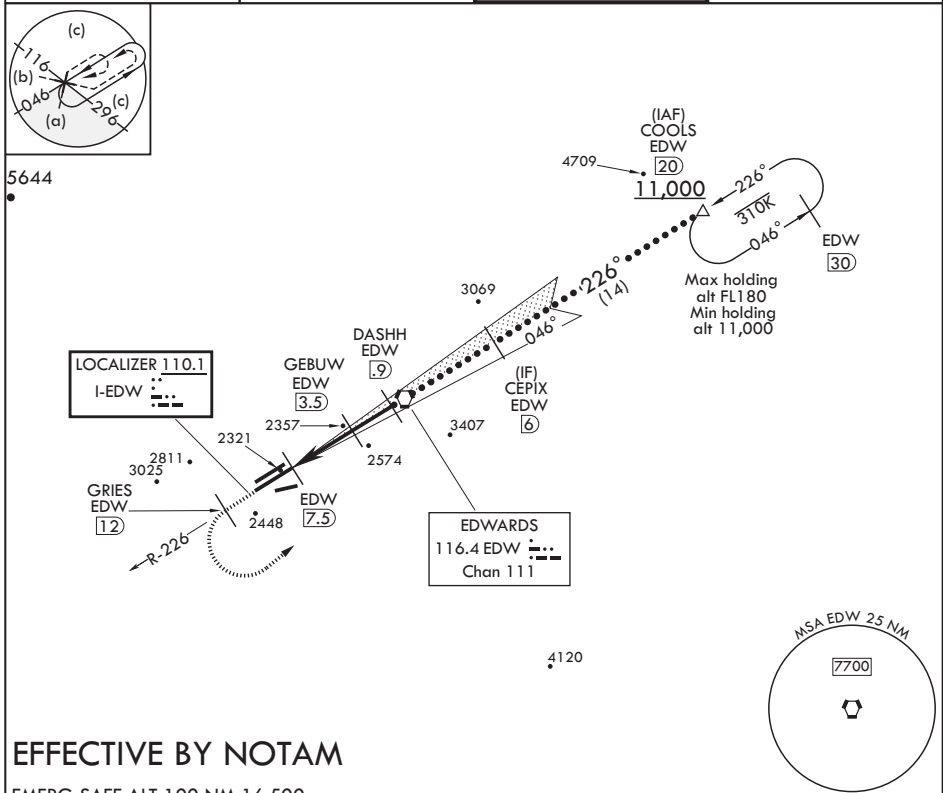
JAL-500 (USAF)

EDWARDS AFB (KEDW)

⚠ * Circling not authorized NW of Rwy 5L-23R.
Circling not authorized at night to Rwy 5L-23R.

MISSED APPROACH: Climb to 11,000. Track EDW VORTAC R-226 outbound to GRIES, then turn left direct COOLS and hold. Missed Approach requires use of RNAV or ATC RADAR monitoring.

ATIS* 127.425 269.9	SPORT APP CON/DEP CON 132.75 343.7	TOWER* 120.7 318.1	GND CON 121.8 225.4
-------------------------------	--	------------------------------	-------------------------------

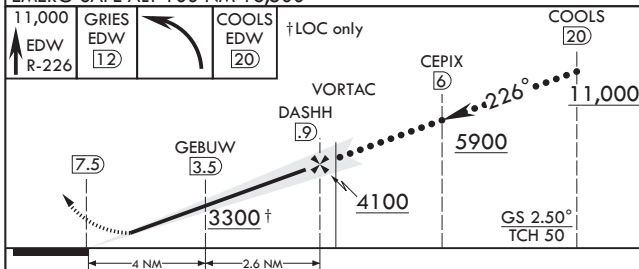


SW-3, 10 OCT 2019 to 07 NOV 2019

SW-3, 10 OCT 2019 to 07 NOV 2019

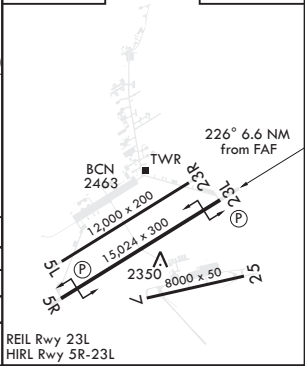
EFFECTIVE BY NOTAM

EMERG SAFE ALT 100 NM 16,500



ELEV 2311	TDZE 2286
-----------	-----------

CATEGORY	C	D	E
S-ILS 23L	2486-3/4	200	(200-3/4)
S-LOC 23L	2540-3/4	254	(300-3/4)
C CIRCLING*	2880-1 1/2 569 (600-1 1/2)	2880-2	569 (600-2)



EDWARDS, CALIFORNIA

34°55'N - 117°53'W

EDWARDS AFB (KEDW)

Orig 10OCT19

HI-ILS or LOC/DME Z RWY 23L