

|  |                        |   |   |
|--|------------------------|---|---|
| WAAS<br>CH <b>82011</b><br><b>W33A</b> | APP CRS<br><b>332°</b> | Rwy Idg<br>TDZE <b>941</b><br>Apt Elev <b>969</b> | <b>6655</b><br><b>941</b><br><b>969</b> |
|--|------------------------|---|---|

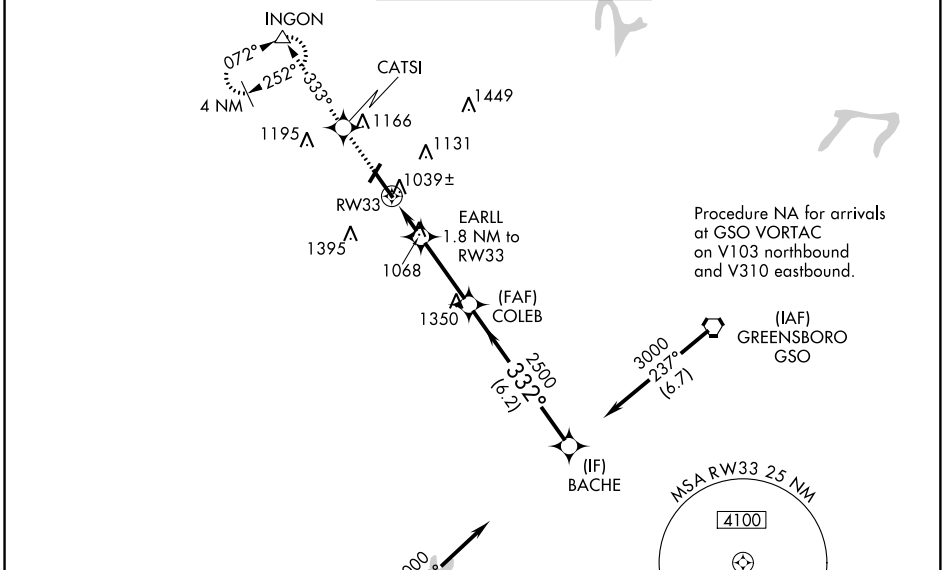
# RNAV (GPS) RWY 33

SMITH REYNOLDS (INT)

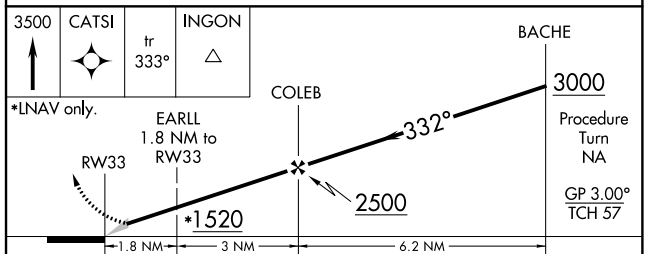
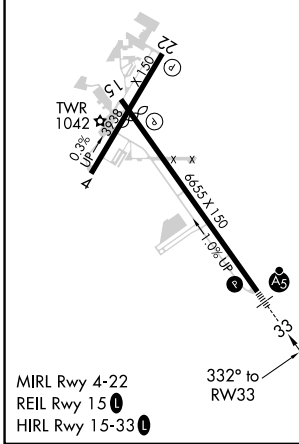
**⚠** For inoperative MALSR, when using Piedmont Triad Intl altimeter setting, increase LPV all Cats visibility to 1 mile. Baro-VNAV NA when using Piedmont Triad Intl altimeter setting. For uncompensated Baro-VNAV systems, LNAV/VNAV NA below -1.6°C (4°F) or above 47°C (116°F). DME/DME RNP-0.3 NA. When local altimeter setting not received, use Piedmont Triad Intl altimeter setting and increase all DA 39 feet, and all MDA 40 feet, increase LNAV/VNAV all Cats and Circling Cat D visibility ¼ mile. Circling Rwy 4, 22 NA at night. \*\*RVR 1800 authorized with use of FD or AP or HUD to DA, NA when using Piedmont Triad Intl altimeter setting.

**MALSR**  
MISSED APPROACH: Climb to 3500 direct CATSI and on 333° track to INGON and hold, continue climb-in-hold to 3500.

|                      |   |   |                          |                         |
|----------------------|---|---|--------------------------|-------------------------|
| ATIS<br><b>121.3</b> | GREENSBORO APP CON<br><b>124.35 269.225</b> | WINSTON-SALEM TOWER *<br><b>123.75 (CTAF) 0 257.8</b> | GND CON<br><b>128.25</b> | UNICOM<br><b>122.95</b> |
|----------------------|---|---|--------------------------|-------------------------|



|          |          |          |
|----------|----------|----------|
| ELEV 969 | <b>D</b> | TDZE 941 |
|----------|----------|----------|



| CATEGORY     | A                     | B                     | C                       | D                       |
|--------------|-----------------------|-----------------------|-------------------------|-------------------------|
| LPV DA**     |                       | 1141/24               | 200 (200-½)             |                         |
| LNAV/VNAV DA |                       | 1407/60               | 466 (500-1¼)            |                         |
| LNAV MDA     | 1380/24               | 439 (500-½)           | 1380/40<br>439 (500-¾)  | 1380/50<br>439 (500-1)  |
| CIRCLING     | 1480-1<br>511 (600-1) | 1580-1<br>611 (700-1) | 1580-1¼<br>611 (700-1¾) | 1740-2½<br>771 (800-2½) |

SE-2, 10 OCT 2019 to 07 NOV 2019

SE-2, 10 OCT 2019 to 07 NOV 2019