

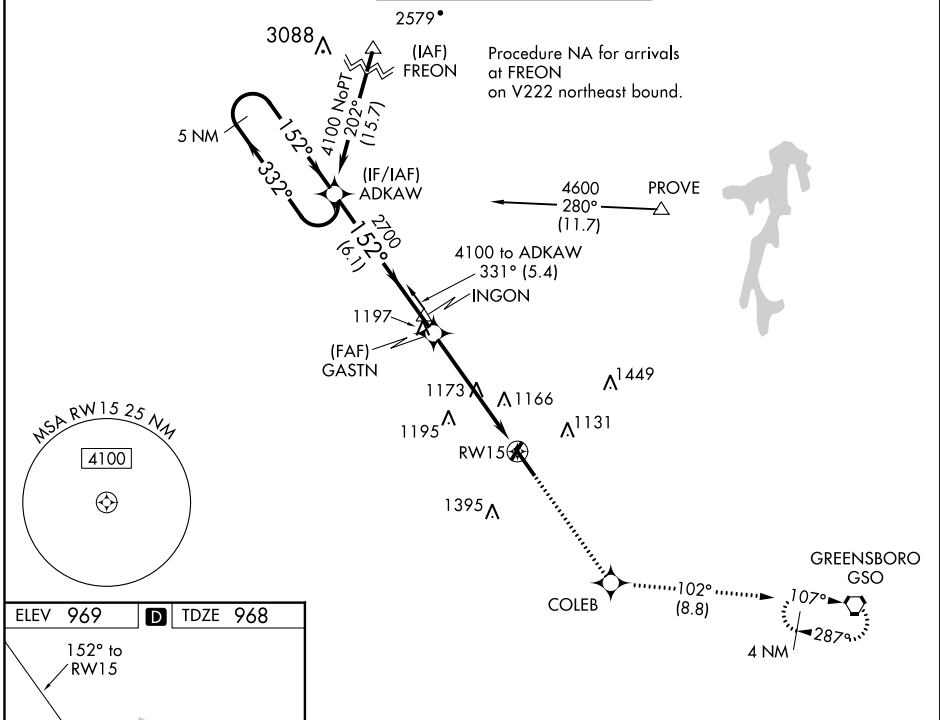
APP CRS	Rwy Idg	6069
152°	TDZE	968
	Apt Elev	969

RNAV (GPS) RWY 15

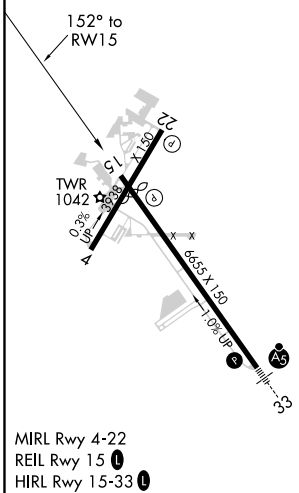
SMITH REYNOLDS (INT)

RNP APCH.		MISSED APPROACH: Climb to 3000 direct COLEB and on track 102° to GSO VORTAC and hold.	
<p>When local altimeter setting not received, use Piedmont Triad Intl altimeter setting and increase all MDA 40 feet and Circling Cat D visibility ¼ mile. Circling Rwy 4, 22 NA at night. Rwy 15 helicopter visibility reduction below ¾ SM NA.</p>			

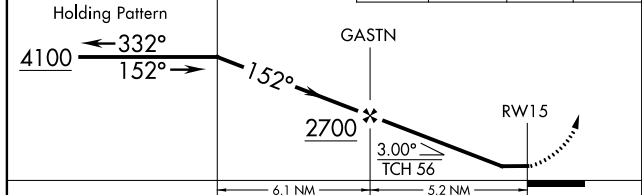
ATIS	GREENSBORO APP CON	WINSTON-SALEM TOWER ★	GND CON	UNICOM
121.3	124.35 269.225	123.75 (CTAF) 0 257.8	128.25	122.95



ELEV 969	D	TDZE 968
----------	----------	----------



VGSI and descent angles not coincident (VGSI Angle 3.00/TCH 38).	3000	COLEB	tr 102°	GSO
	↑	✦		◡



CATEGORY	A	B	C	D
LNAV MDA	1440-1	472 (500-1)	1440-1 ³ / ₈	472 (500-1 ³ / ₈)
CIRCLING	1480-1 511 (600-1)	1580-1 611 (700-1)	1580-1 ³ / ₄ 611 (700-1 ³ / ₄)	1740-2 ¹ / ₂ 771 (800-2 ¹ / ₂)

SE-2, 10 OCT 2019 to 07 NOV 2019

SE-2, 10 OCT 2019 to 07 NOV 2019