

TACAN RWY 19R

TACAN IAB Chan 112	APCH CRS 186°	Rwy Idg THRE 1371 Arpt Elev 1371
------------------------------	-------------------------	--

AL-453 [USAF]

MC CONNELL AFB (KIAB)

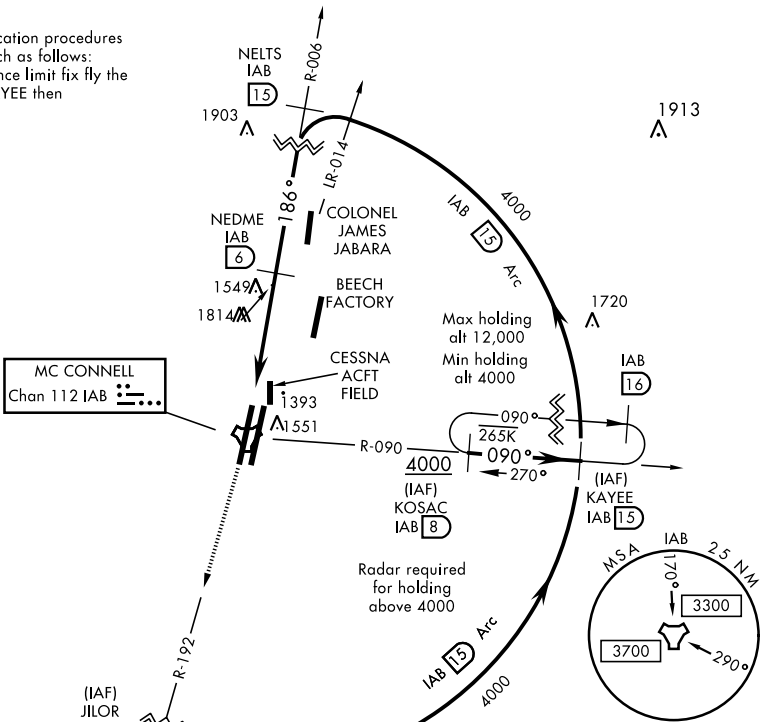
▼ * When ALS inop, increase CAT AB RVR to 55 and vis to 1 mile, CAT CDE vis to 1 3/8 miles.
 ** Circling not authorized W of Rwy 1L-19R.



MISSED APPROACH: Climb to 4000 via IAB TACAN R-192 to 15 DME (JILOR). Expect further clearance from ATC.

ATIS 124.65 269.9	WICHITA APP CON 134.8 269.1	MC CONNELL TOWER 127.25 291.775	GND CON 118.0 275.8
-----------------------------	---------------------------------------	---	-------------------------------

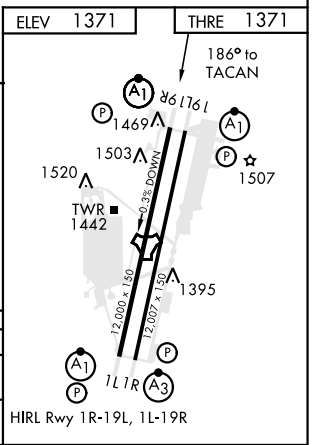
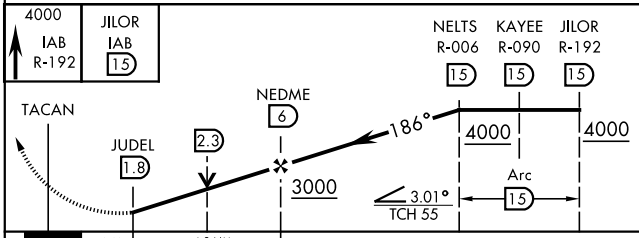
ATC lost communication procedures on missed approach as follows:
 At 15 DME clearance limit fix fly the 15 DME Arc to KAYEE then KOSAC and hold.



NC-2, 10 OCT 2019 to 07 NOV 2019

NC-2, 10 OCT 2019 to 07 NOV 2019

ELEV 1371	THRE 1371
-----------	-----------



CATEGORY	A	B	C	D	E
S-19R*	1820/24 449 (500-1/2)		1820/45 449 (500-7/8)		
CIRCLING**	1900-1 529 (600-1)		1900-1 1/2 529 (600-1 1/2)	2400-3 1029 (1100-3)	

TACAN RWY 19R