

APCH CRS	Rwy Idg	12,007
005°	TDZE	1347
	Arpt Elev	1371

AL-453 (USAF)

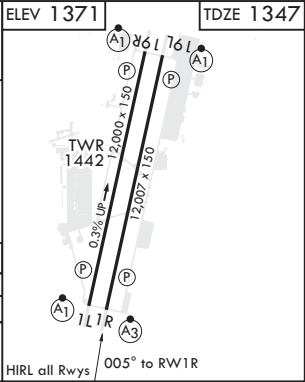
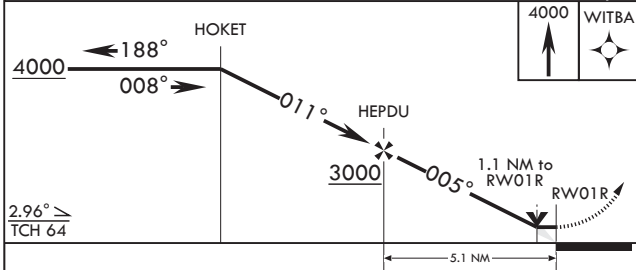
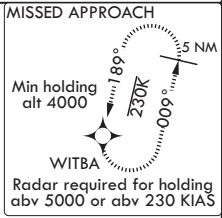
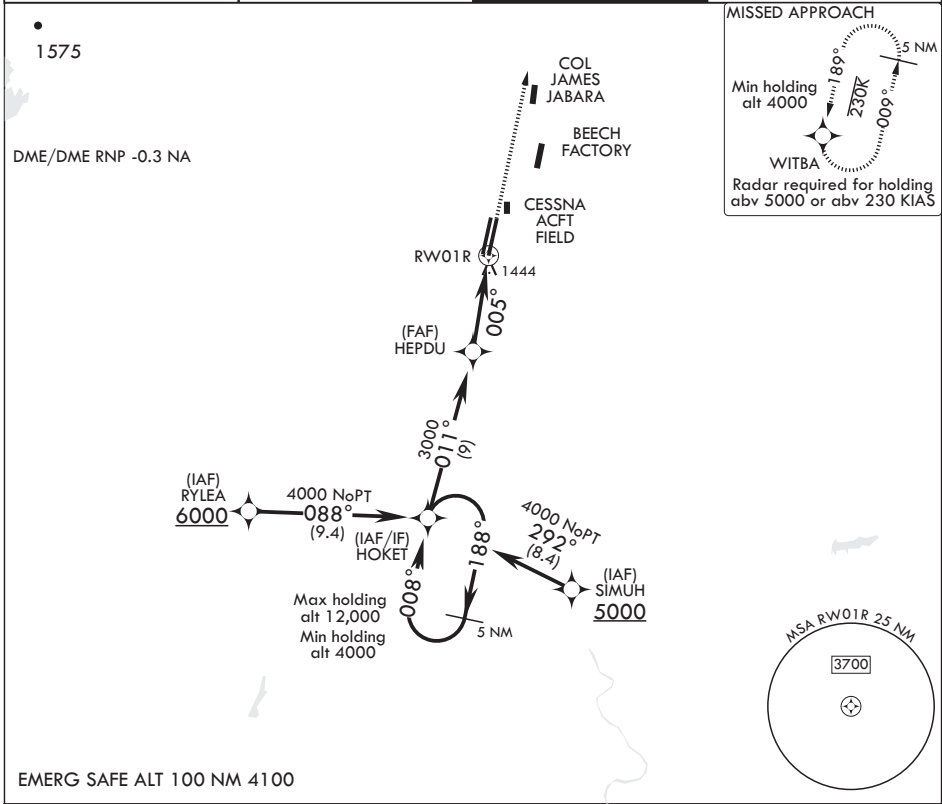
MC CONNELL AFB (KIAB)

V * When ALS inop, increase CAT AB RVR to 55, vis to 1 mile; CAT CDE RVR to 60, vis to 1.1/8 miles.
 ** Circling not authorized west of Rwy 1L-19R.



MISSED APPROACH: Climbing right turn to 4000 direct WITBA and hold.

D ATIS 124.65 269.9	WICHITA APP CON 134.8 269.1	TOWER 127.25 291.775	GND CON 118.0 275.8
-------------------------------	---------------------------------------	--------------------------------	-------------------------------



CATEGORY	A	B	C	D	E
LNVA MDA*	1740/40		393	(400-3/4)	
C CIRCLING**	1900-1 529 (600-1)		1900-1 1/2 529 (600-1 1/2)	2400-3 1029 (1100-3)	

NC-2, 10 OCT 2019 to 07 NOV 2019

NC-2, 10 OCT 2019 to 07 NOV 2019