

WICHITA, KANSAS

RNAV (GPS) RWY 1L

WAAS CH 71272 W01A	APCH CRS 008°	Rwy ldg TDZE 12,000 1347	Arprt Elev 1371
--------------------------	------------------	--------------------------------	--------------------

AL-453 (USAF)

MC CONNELL AFB (KIAB)

V * When ALS inop, increase CAT ABCDE RVR to 40, vis to 3/4 mile.
 ** When ALS inop, increase CAT ABCDE vis to 1 1/4 miles.
 *** When ALS inop, increase CAT AB RVR to 55, vis to 1 mile; CAT CDE RVR to 60, vis to 1 1/8 miles.



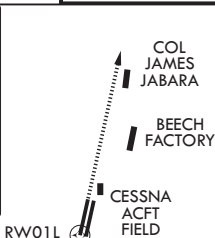
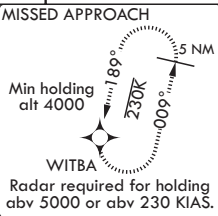
MISSED APPROACH: Climb to 4000 direct WITBA and hold.

D ATIS
124.65 269.9

WICHITA APP CON
134.8 269.1

TOWER
127.25 291.775

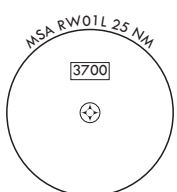
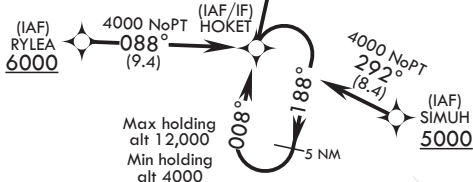
GND CON
118.0 275.8



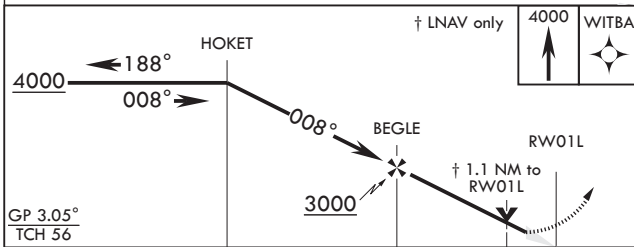
DME/DME RNP -0.3 NA.

For uncompensated Baro-VNAV systems, Procedure NA below -17°C (2°F) or above 49°C (121°F).

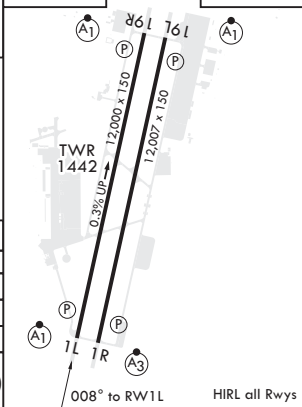
****Circling not authorized west of Rwy 1L-19R.



EMERG SAFE ALT 100 NM 4100



ELEV 1371 TDZE 1347



CATEGORY	A	B	C	D	E
LPV DA*	1547/24		200	(200-1/2)	
LNAV/VNAV DA**	1732/40		385	(400-7/8)	
LNAV MDA***	1740/24 393 (400-1/2)		1740/35	393 (400-5/8)	
C CIRCLING****	1900-1 529 (600-1)		1900-1 1/2 529 (600-1/2)	2400-3 1029 (1100-3)	

WICHITA, KANSAS
Amdt 2 07DEC17

37°37'N - 97°16'W

MC CONNELL AFB (KIAB)

RNAV (GPS) RWY 1L

NC-2. 10 OCT 2019 to 07 NOV 2019

NC-2. 10 OCT 2019 to 07 NOV 2019