

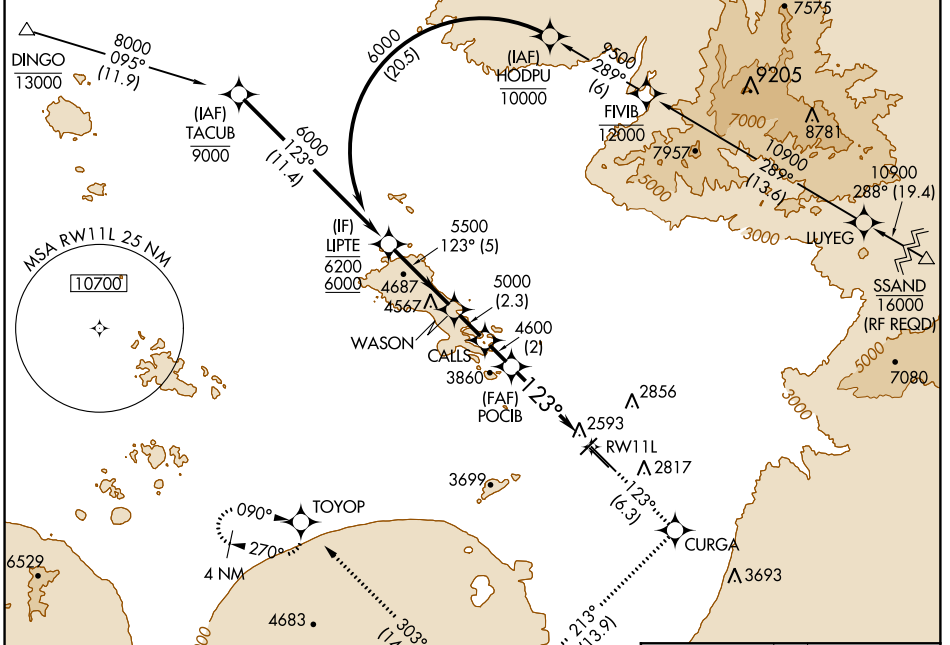
# RNAV (RNP) Y RWY 11L

TUCSON INTL (TUS)

APP CRS <b>123°</b>	Rwy Idg TDZE <b>2599</b>	<b>10996</b>
	Apt Elev <b>2643</b>	

RNP AR APCH.		MALSR	MISSED APPROACH: Climb to 6000 via 123° track to CURGA, 213° track to REBDE, 303° track to TOYOP and hold.
▼ NA	For uncompensated Baro-VNAV systems, procedure NA below -3°C or above 52°C. For inoperative MALSR, increase RNP 0.30 visibility to RVR 6000 all Cats. GPS required.	AS	

ATIS <b>123.8 279.65</b>	TUCSON APP CON <b>119.4 318.1</b>	TUCSON TOWER <b>118.3 257.8</b>	GND CON <b>124.4 348.6</b>	CLNC DEL <b>126.65 326.2</b>
-----------------------------	--------------------------------------	------------------------------------	-------------------------------	---------------------------------

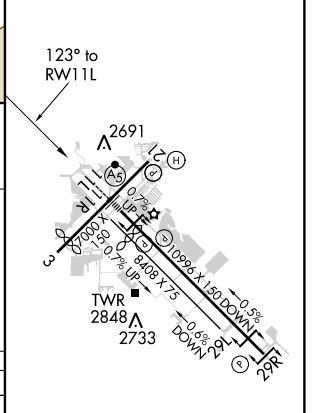
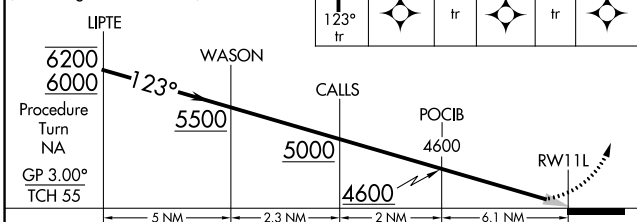


SW-4, 10 OCT 2019 to 07 NOV 2019

SW-4, 10 OCT 2019 to 07 NOV 2019

ELEV 2643	<b>D</b> TDZE 2599
-----------	--------------------

VGSI and RNAV glidepath not coincident (VGSI Angle 3.00/TCH 73).



CATEGORY	A	B	C	D
RNP 0.30 DA	2947/40 348 (400-¾)			

**AUTHORIZATION REQUIRED**

HIRL Rwy 11L-29R  
MIRL Rwy 3-21 and 11R-29L  
REIL Rwy 21, 29L and 29R