

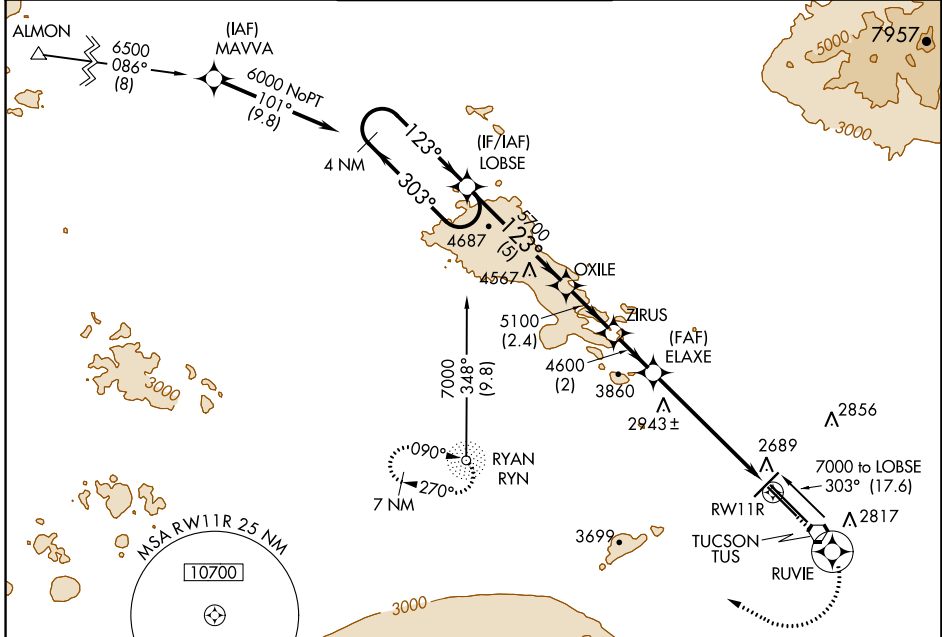
RNAV (GPS) RWY 11R

TUCSON INTL (TUS)

APP CRS 123°	Rwy Idg 6998
	TDZE 2605
	Apt Elev 2643

NA For uncompensated Baro-VNAV systems, LNAV/VNAV NA below -20°C (-4°F) or above 43°C (111°F).
MISSED APPROACH: Climb to 6000 via 123° course to RUVIE WP then climbing right turn direct RYN NDB and hold.

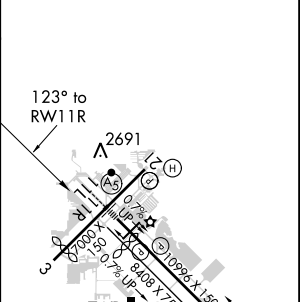
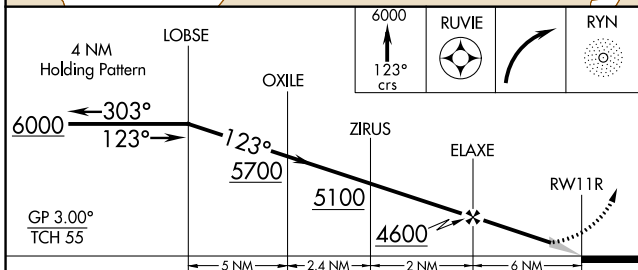
ATIS 123.8 279.65	TUCSON APP CON 119.4 318.1	TUCSON TOWER 118.3 257.8	GND CON 124.4 348.6	CLNC DEL 126.65 326.2
-----------------------------	--------------------------------------	------------------------------------	-------------------------------	---------------------------------



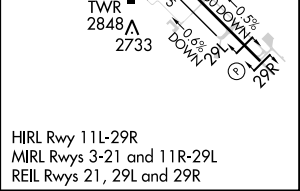
SW-4, 10 OCT 2019 to 07 NOV 2019

SW-4, 10 OCT 2019 to 07 NOV 2019

ELEV 2643	D TDZE 2605
-----------	--------------------



CATEGORY	A				B		C		D		
GLS DA	NA										
LNAV/VNAV DA	2965-1¼				360 (400-1¼)						
LNAV MDA	3200-1		595 (600-1)		3200-1½		595 (600-1½)		3200-1¾		595 (600-1¾)
CIRCLING	3200-1		3220-1		3220-1½		3220-1½		3220-2		577 (600-2)
	557 (600-1)		577 (600-1)		577 (600-1½)		577 (600-1½)		577 (600-2)		



HIRL Rwy 11L-29R
 MIRL Rwy 3-21 and 11R-29L
 REIL Rwy 21, 29L and 29R