

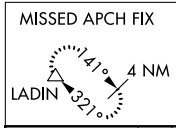
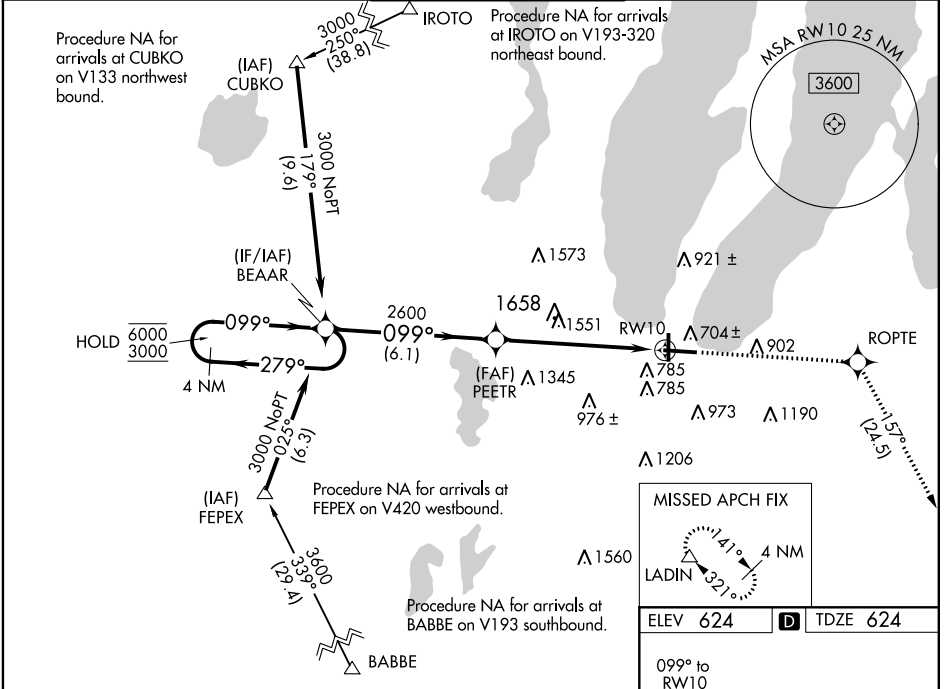
WAAS CH 42610 W10A	APP CRS 099°	Rwy Idg TDZE 624 Apt Elev 624	7016
--	------------------------	---	-------------

RNAV (GPS) RWY 10

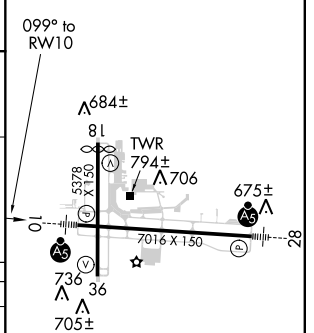
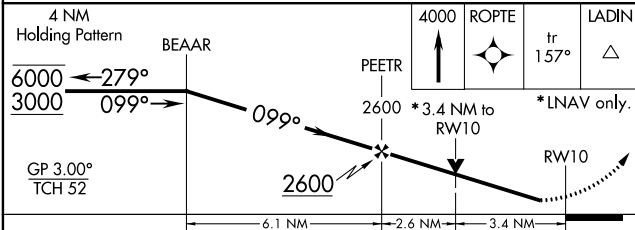
CHERRY CAPITAL (TV'C)

RNP APCH.	<p>▼ For uncompensated Baro-VNAV systems, LNAV/VNAV NA below -19°C (-2°F) or above 54°C (130°F). Rwy 10 helicopter visibility reduction below 3/4 SM NA. For inop ALS, increase LPV visibility all Cats 1/2 SM. Inop table does not apply to LNAV/VNAV all Cats and LNAV Cats C/D.</p> <p>⚠ -20°C</p>	MALSR 	MISSED APPROACH: Climb to 4000 direct ROPTe and on track 157° to LADIN and hold.
-----------	---	-----------	---

ATIS 119.175	MINNEAPOLIS CENTER 132.9 338.3	TRAVERSE CITY TOWER* 124.2 (CTAF) 0 348.6	GND CON 121.8 348.6	UNICOM 122.95
------------------------	--	---	-------------------------------	-------------------------



ELEV 624	D TDZE 624
----------	-------------------



CATEGORY	A	B	C	D
LPV DA	909-3/4		285 (300-3/4)	
LNAV/VNAV DA	1983-5		1359 (1400-5)	
LNAV MDA	1780-3/4 1156 (1200-3/4)	1780-1 1156 (1200-1)	1780-3	1156 (1200-3)
C CIRCLING	1780-1 1/4 1156 (1200-1 1/4)	1780-1 1/2 1156 (1200-1 1/2)	1780-3	1156 (1200-3)

HIRL Rwy 10-28
MIRL Rwy 18-36
REIL Rwy 36

EC-1, 10 OCT 2019 to 07 NOV 2019

EC-1, 10 OCT 2019 to 07 NOV 2019