

LOC I-TVC <b>110.7</b>	APP CRS <b>279°</b>	Rwy Idg <b>7016</b>
		TDZE <b>616</b>
		Apt Elev <b>624</b>

# ILS or LOC RWY 28

CHERRY CAPITAL (TVC)

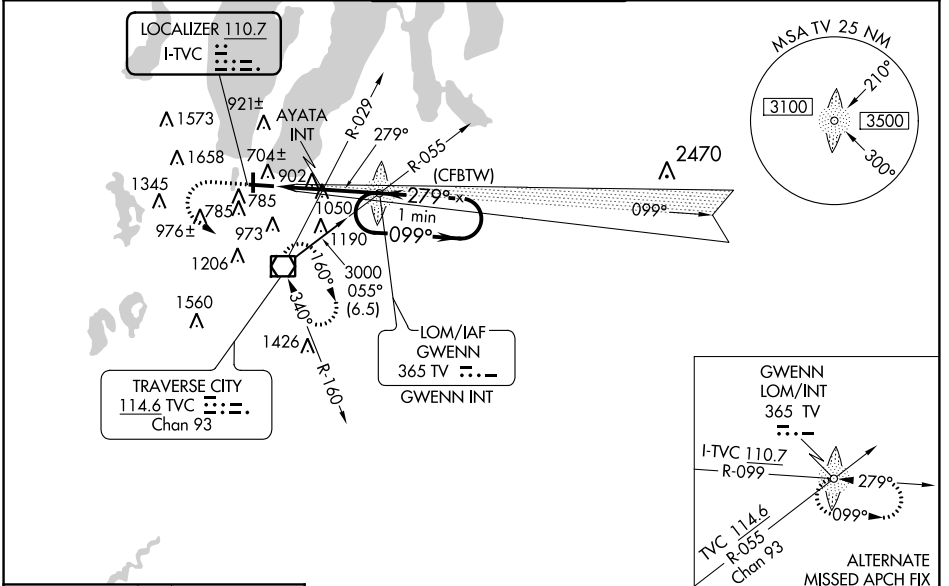
**⚠** AYATA fix minimums: For inop MALSR, increase S-LOC 28 Cat C, D visibility to 2 miles. AYATA fix minimums: For inop MALSR when using Bellaire altimeter setting, increase S-LOC 28 Cat C, D visibility to 2½ miles. Circling to Rwy 18 NA at night. When local altimeter setting not received, use Bellaire altimeter setting and increase all DA 51 feet and all MDA 60 feet, increase S-LOC 28 Cat A and Circling Cat C visibility ¼ mile; increase AYATA fix minimums S-LOC 28 Cats C, D visibility ½ mile and Circling Cat C visibility ¼ mile.

MALSR

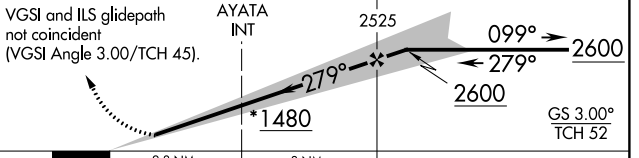
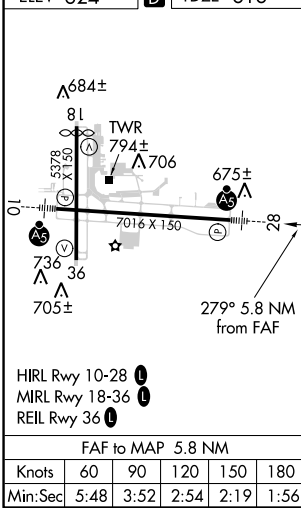
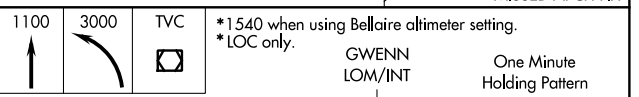


**MISSED APPROACH:**  
Climb to 1100 then climbing left turn to 3000 direct TVC VOR/DME and hold, continue climb-in-hold to 3000.

ATIS <b>119.175</b>	MINNEAPOLIS CENTER <b>132.9 338.3</b>	TRAVERSE CITY TOWER * <b>124.2 (CTAF) 348.6</b>	GND CON <b>121.8 348.6</b>	UNICOM <b>122.95</b>
------------------------	--	--	-------------------------------	-------------------------



ELEV 624 TDZE 616



CATEGORY	A	B	C	D
S-ILS 28	816-½ 200 (200-½)			
S-LOC 28	1480-¾ 864 (900-¾)	1480-2 864 (900-2)		
<b>C</b> CIRCLING	1480-1¼ 856 (900-1¼)	1500-2½ 876 (900-2½)	1720-3 1096 (1100-3)	
AYATA FIX MINIMUMS				
S-LOC 28	1360-½ 744 (800-½)	1360-¾ 744 (800-¾)	1360-1¾ 744 (800-1¾)	
<b>C</b> CIRCLING	1360-1 736 (800-1)	1360-1¼ 736 (800-1¼)	1500-2½ 876 (900-2½)	1720-3 1096 (1100-3)

EC-1, 10 OCT 2019 to 07 NOV 2019

EC-1, 10 OCT 2019 to 07 NOV 2019