

APP CRS 280°	Rwy Idg TDZE Apt Elev	9003 413 421
------------------------	-----------------------------	---

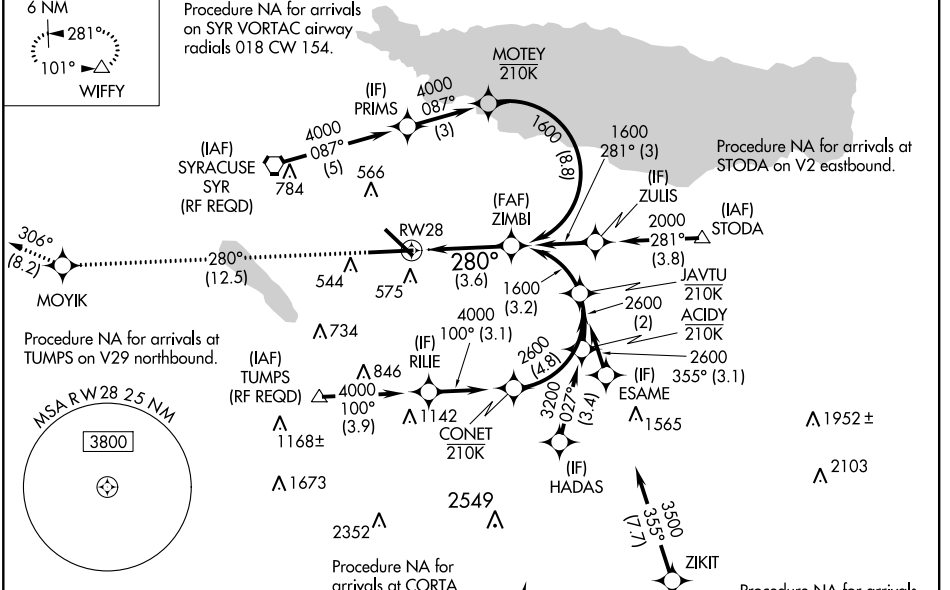
RNAV (RNP) Y RWY 28

SYRACUSE HANCOCK INTL (SYR)

<p>GPS required. For uncompensated Baro-VNAV systems, procedure NA below -18°C (0°F) or above 54°C (130°F). For inoperative ALSF-2, increase RNP 0.15 all Cats visibility to 1½. For inoperative ALSF-2, increase RNP 0.30 all Cats visibility to 1¾.</p>		<p>ALSF-2</p>	<p>MISSED APPROACH: Climb to 3000 on track 280° to MOYIK and on track 306° to WIFFY and hold.</p>	
<p>ATIS 124.225</p>	<p>SYRACUSE APP CON 134.275 279.6</p>	<p>SYRACUSE TOWER 120.3 239.0</p>	<p>GND CON 121.7 348.6</p>	<p>CLNC DEL 125.05 257.775</p>

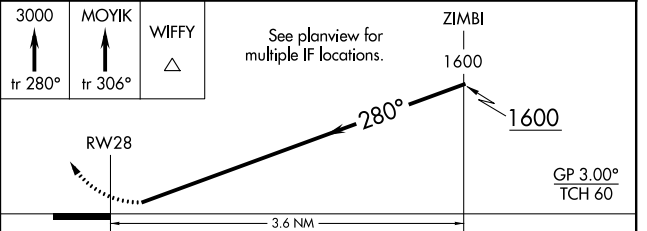
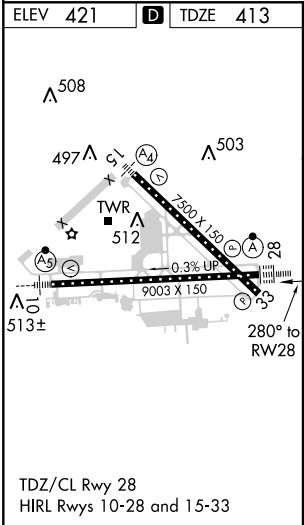


Procedure NA for arrivals on SYR VORTAC airway radials 018 CW 154.



NE-2, 10 OCT 2019 to 07 NOV 2019

NE-2, 10 OCT 2019 to 07 NOV 2019



CATEGORY	A	B	C	D
RNP 0.15 DA		862/55	449 (500-1)	
RNP 0.30 DA		957-1¾	544 (600-1¾)	

AUTHORIZATION REQUIRED