


APP CRS	Rwy Idg	<b>9003</b>
<b>100°</b>	TDZE	<b>421</b>
	Apt Elev	<b>421</b>

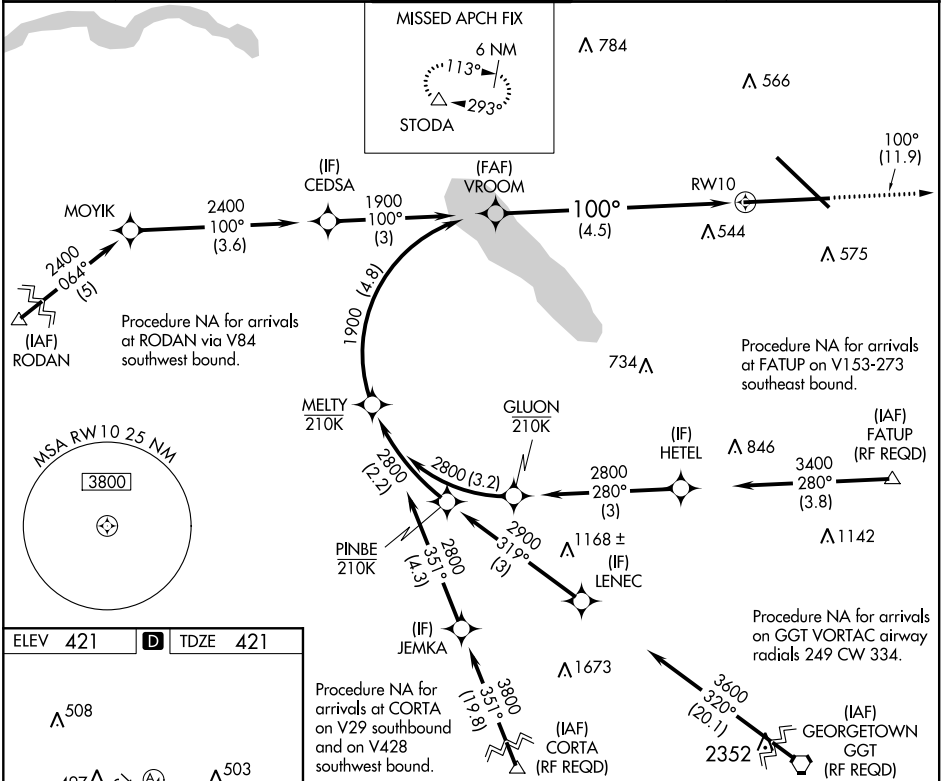
# RNAV (RNP) Y RWY 10

SYRACUSE HANCOCK INTL (SYR)

▼ For uncompensated Baro-VNAV systems, procedure NA below -18°C (0°F) or above 54°C (130°F). For inoperative MALS, increase RNP 0.15 all Cats visibility to 1½. For inoperative MALS, increase RNP 0.30 all Cats visibility to 1½. GPS required.

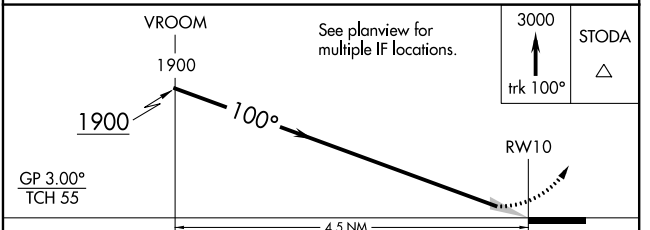
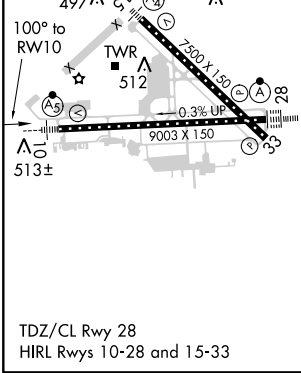
MALS  MISSED APPROACH: Climb to 3000 on track 100° to STODA and hold.

ATIS <b>124.225</b>	SYRACUSE APP CON <b>134.275 279.6</b>	SYRACUSE TOWER <b>120.3 239.0</b>	GND CON <b>121.7 348.6</b>	CLNC DEL <b>125.05 257.775</b>
------------------------	--	--------------------------------------	-------------------------------	-----------------------------------



NE-2, 10 OCT 2019 to 07 NOV 2019

NE-2, 10 OCT 2019 to 07 NOV 2019



CATEGORY	A	B	C	D
RNP 0.15 DA		816/45	395 (400-7%)	
RNP 0.30 DA		881/55	460 (500-1)	

**AUTHORIZATION REQUIRED**