

WAAS CH <b>50117</b> <b>W15A</b>	APP CRS <b>147°</b>	Rwy ldg TDZE Apt Elev	<b>7500</b> <b>417</b> <b>421</b>
--	------------------------	-----------------------------	---

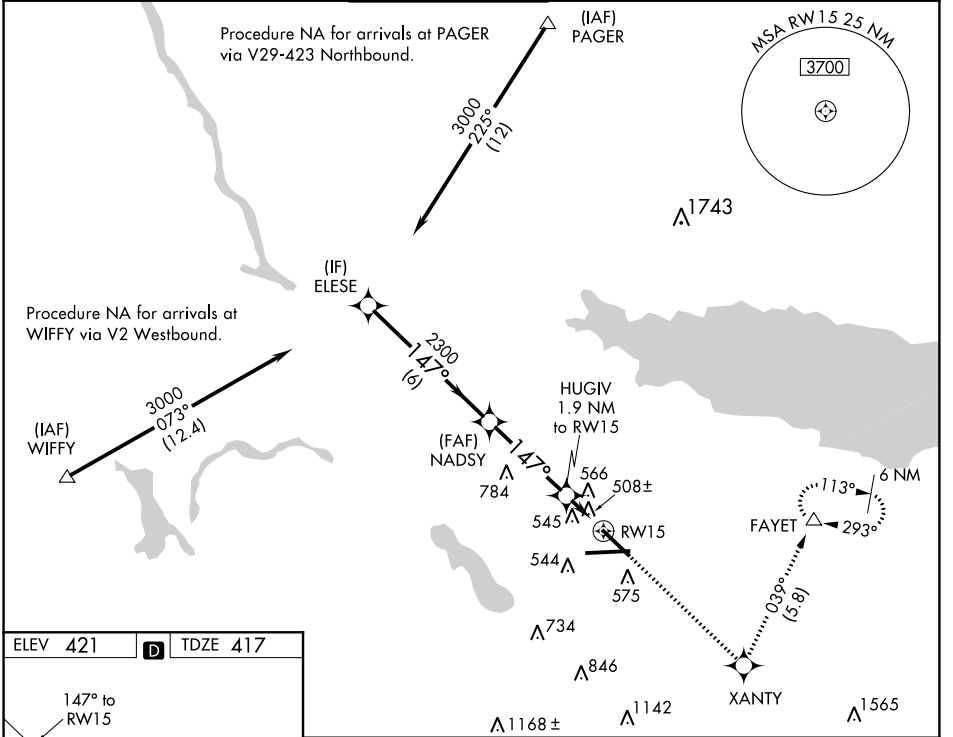
# RNAV (GPS) RWY 15

SYRACUSE HANCOCK INTL (SYR)

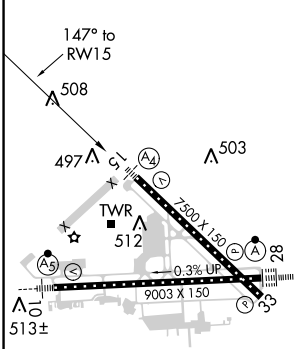
▼ For uncompensated Baro-VNAV systems, LNAV/VNAV NA below -15°C (5°F) or above 48°C (118°F). DME/DME RNP-0.3 NA. Inoperative table does not apply to LNAV/VNAV all Cats and LNAV Cat C. Visibility reduction by helicopters NA.

MALS MISSED APPROACH: Climb to 3000 direct XANTY and left turn via 039° track to FAYET and hold.

ATIS <b>124.225</b>	SYRACUSE APP CON <b>134.275 279.6</b>	SYRACUSE TOWER <b>120.3 239.0</b>	GND CON <b>121.7 348.6</b>	CLNC DEL <b>125.05 257.775</b>
------------------------	--	--------------------------------------	-------------------------------	-----------------------------------



ELEV 421	<b>D</b>	TDZE 417
----------	----------	----------



TDZ/CL Rwy 28  
HIRL Rwy 10-28 and 15-33

ELESE	3000	NADSY	3000	XANTY	FAYET
	2300		HUGIV 1.9 NM to RW15	tr 039°	
Procedure Turn NA	GP 3.00°	TCH 53	6 NM	3.8 NM	1.9 NM
CATEGORY	A	B	C	D	
LPV DA	735-1		318 (400-1)		
LNAV/VNAV DA	889-1¾		472 (500-1¾)		
LNAV MDA	900-¾	483 (500-¾)	900-1¼	483 (500-1¼)	900-1½
CIRCLING	900-1	479 (500-1)	900-1½	479 (500-1½)	980-2
					559 (600-2)

NE-2, 10 OCT 2019 to 07 NOV 2019

NE-2, 10 OCT 2019 to 07 NOV 2019