

LOC/DME I-SYR 109.9 Chan 36	APP CRS 280°	Rwy Idg TDZE Apt Elev	9003 413 421
---	------------------------	-----------------------------	---

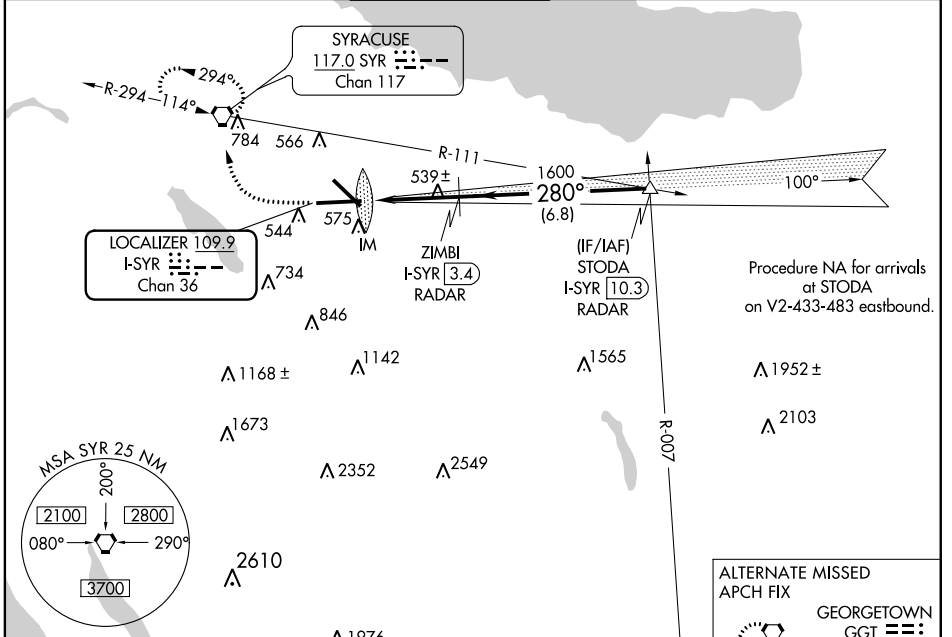
ILS or LOC RWY 28

SYRACUSE HANCOCK INTL (SYR)

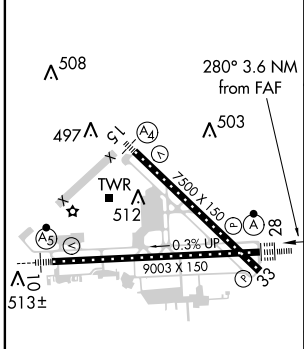
ALSF-2 For inoperative ALSF-2, increase S-LOC 28 Cats A and B visibility to RVR 5500 and Cats C and D visibility to RVR 6000. DME or RADAR required.

ALSF-2 MISSED APPROACH: Climb to 1100 then climbing right turn to 3000 direct SYR VORTAC and hold, continue climb-in-hold to 3000.

ATIS 124.225	SYRACUSE APP CON 134.275 279.6	SYRACUSE TOWER 120.3 239.0	GND CON 121.7 348.6	CLNC DEL 125.05 257.775
------------------------	--	--------------------------------------	-------------------------------	-----------------------------------



ELEV 421	D	TDZE 413
----------	----------	----------



CATEGORY	A				B				C				D			
S-ILS 28	613/18				200 (200-½)											
S-LOC 28	800/24				387 (400-½)				800/35				387 (400-¾)			
CIRCLING	880-1 459 (500-1)				900-1 479 (500-1)				900-1½ 479 (500-1½)				980-2 559 (600-2)			

NE-2, 10 OCT 2019 to 07 NOV 2019

NE-2, 10 OCT 2019 to 07 NOV 2019