


LOC/DME I-MRZ 109.9 Chan 36	APP CRS 100°	Rwy Idg TDZE Apt Elev	9003 421 421
--	------------------------	-----------------------------	---

ILS or LOC RWY 10

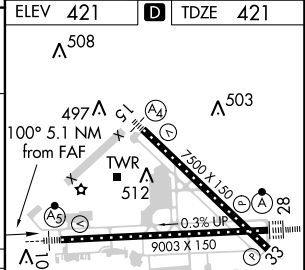
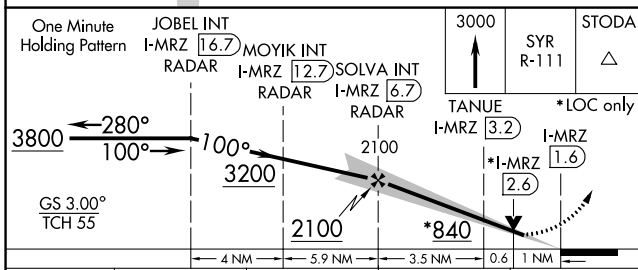
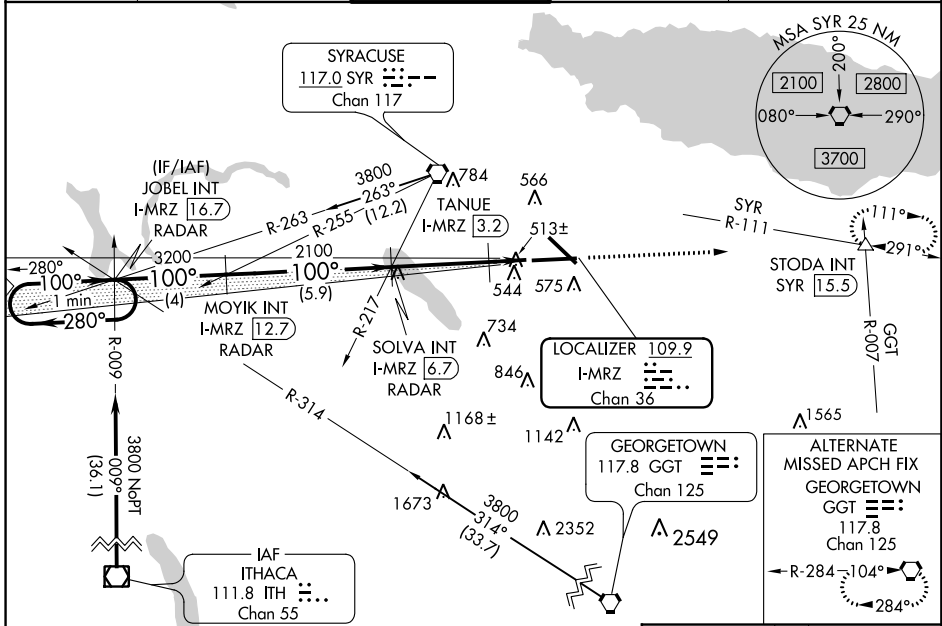
SYRACUSE HANCOCK INTL (SYR)

⚠ For inoperative MALS/R, increase S-LOC 10 Cats A and B visibility to RVR 5500 and Cats C and D visibility to 1 1/4. TANUE fix minimums, for inoperative MALS/R, increase S-LOC 10 all Cats visibility to RVR 5500. **RVR 1800 authorized with the use of FD or AP or HUD to DA.

MALS/R


MISSED APPROACH: Climb to 3000 via SYR VORTAC R-111 to STODA Int/SYR 15.5 DME and hold.

ATIS 124.225	SYRACUSE APP CON 134.275 279.6	SYRACUSE TOWER 120.3 239.0	GND CON 121.7 348.6	CLNC DEL 125.05 257.775
------------------------	--	--------------------------------------	-------------------------------	-----------------------------------



CATEGORY	A	B	C	D
S-ILS 10	**621/24 200 (200-1/2)			
S-LOC 10	840/24	419 (500-1/2)	840/40	419 (500-3/4)
CIRCLING	880-1 459 (500-1)	900-1 479 (500-1)	900-1 1/2 479 (500-1 1/2)	980-2 559 (600-2)
TANUE FIX MINIMUMS				
S-LOC 10	780/24	359 (400-1/2)	780/35	359 (400-3/4)
CIRCLING	880-1 459 (500-1)	900-1 479 (500-1)	900-1 1/2 479 (500-1 1/2)	980-2 559 (600-2)

TDZ/CL Rwy 28

HIRL Rwys 10-28 and 15-33

FAF to MAP 5.1 NM

Knots	60	90	120	150	180
Min:Sec	5:06	3:24	2:33	2:02	1:42

NE-2, 10 OCT 2019 to 07 NOV 2019

NE-2, 10 OCT 2019 to 07 NOV 2019