

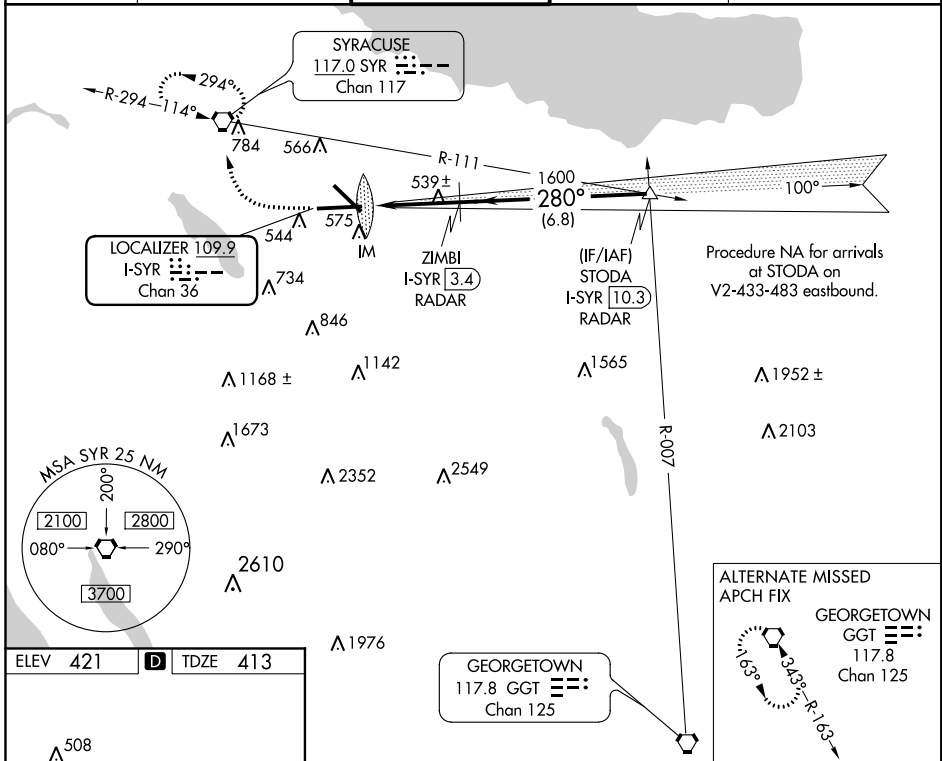
LOC/DME I-SYR 109.9 Chan 36	APP CRS 280°	Rwy Idg TDZE 413 Apt Elev 421	9003 413 421
---	------------------------	---	---

ILS RWY 28 (CAT II)

SYRACUSE HANCOCK INTL (SYR)

V RVR 1000 authorized with specific OPSEC, MSPEC, or LOA approval and use of autoland or HUD to touchdown.	ALSIF-2	MISSED APPROACH: Climb to 1100 then climbing right turn to 3000 direct SYR VORTAC and hold, continue climb-in-hold to 3000.

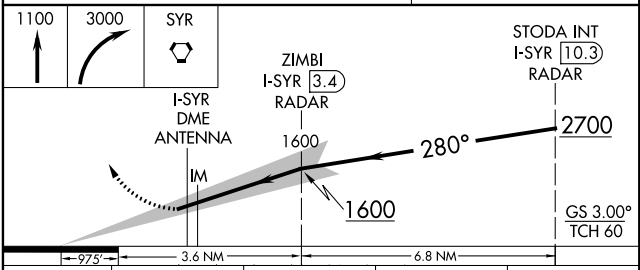
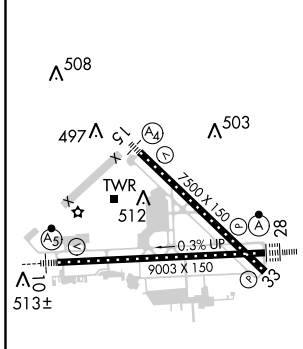
ATIS 124.225	SYRACUSE APP CON 134.275 279.6	SYRACUSE TOWER 120.3 239.0	GND CON 121.7 348.6	CLNC DEL 125.05 257.775
------------------------	--	--------------------------------------	-------------------------------	-----------------------------------



NE-2, 10 OCT 2019 to 07 NOV 2019

NE-2, 10 OCT 2019 to 07 NOV 2019

ELEV 421	D	TDZE 413
-----------------	----------	-----------------



CATEGORY	A	B	C	D
S-ILS 28	RA 100/12		100 DA	513

CATEGORY II ILS - SPECIAL AIRCREW & AIRCRAFT CERTIFICATION REQUIRED