

SUMTER, SOUTH CAROLINA

TACAN Y RWY 22R

TACAN SSC Chan 38	APCH CRS 222°	Rwy Idg TDZE 240 Arpt Elev 241	22R TDZE 240 Arpt Elev 241	22L TDZE 235 Arpt Elev 241
-----------------------------	-------------------------	--	--	--

AL-409 [USAF]

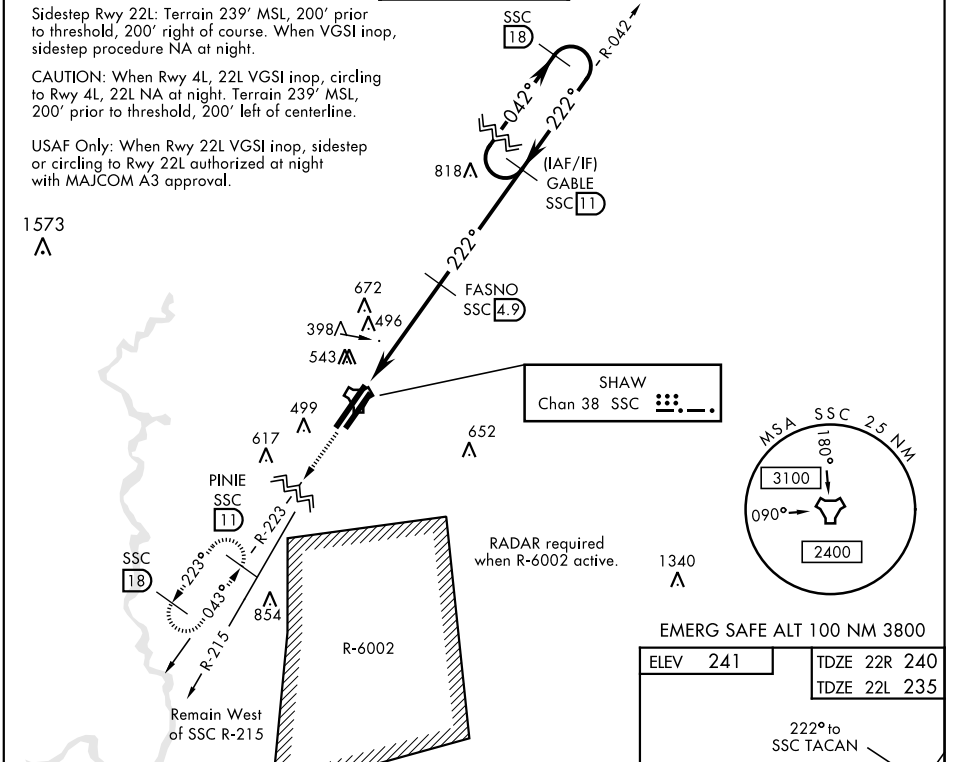
SHAW AFB (KSSC)

▼ * When ALS inop, increase CAT AB RVR to 55, vis to 1 mile; CAT CDE vis to 1½ miles.
 ** When ALS inop, increase CAT AB RVR to 55, vis to 1 mile; CAT CDE vis to 1¾ miles.

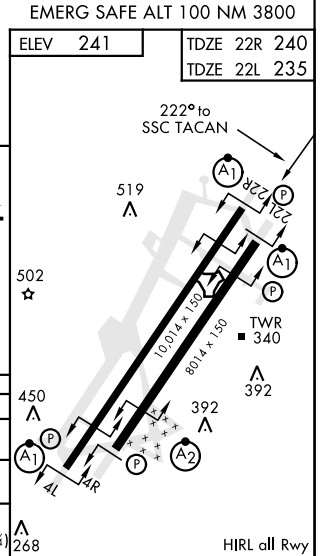
ALSF-1

MISSED APPROACH: Climbing to 2000, intercept SSC TACAN R-223 to PINIE and hold.

ATIS ★ 132.125 270.1	SHAW APP CON 125.4 318.1	SHAW TOWER ★ 126.65 254.25	GND CON 126.1 275.8	CLNC DEL 126.1 275.8
--------------------------------	------------------------------------	--------------------------------------	-------------------------------	--------------------------------



TACAN Y RWY 22R



	TACAN		FASNO		GABLE R-042	
	REBIE		1700		2000	
	.6 NM		3.9 NM		2.96° TCH 51	
CATEGORY	A	B	C	D	E	
S-22R*	760/24 520 (600-½)		760/55 520 (600-1)			
SIDESTEP** 22L	740/50		505		(500-1)	
CIRCLING	820-1 579 (600-1)	880-1 639 (700-1)	1000-2¼ 759 (800-2¼)	1000-2½ 759 (800-2½)	1000-2¾ 759 (800-2¾)	

SUMTER, SOUTH CAROLINA
Amdt 1 10OCT19

33° 58' N-80° 28' W

SHAW AFB (KSSC)

TACAN Y RWY 22R

SE-2: 10 OCT 2019 to 07 NOV 2019

SE-2: 10 OCT 2019 to 07 NOV 2019