

SUMTER, SOUTH CAROLINA

HI-TACAN Z RWY 4L

TACAN SSC Chan 38	APCH CRS 043°	Rwy Idg TDZE 240 Arprt Elev 241	4L 10,014	4R 8014 236 241
-----------------------------	-------------------------	---	---------------------	---

JAL-409 [USAF]

SHAW AFB (KSSC)

* When ALS inop, increase CAT CDE vis to 1 1/8 miles.

MISSED APPROACH: Climbing to 2000, intercept SSC TACAN R-042 to GABLE and hold.

ATIS ★ 132.125 270.1	SHAW APP CON 125.4 318.1	SHAW TOWER ★ 126.65 254.25	GND CON 126.1 275.8	CLNC DEL 126.1 275.8
--------------------------------	------------------------------------	--------------------------------------	-------------------------------	--------------------------------

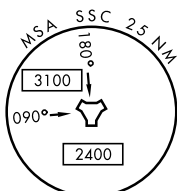
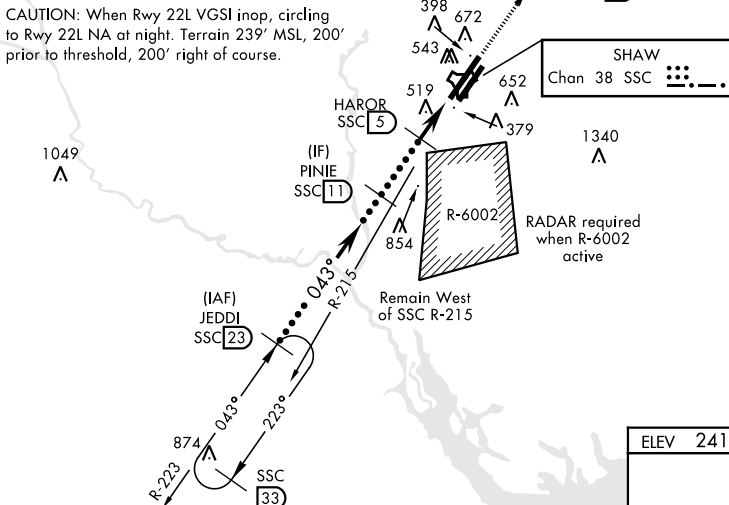
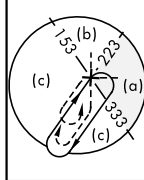
When VGSI inop, procedure NA at night. Terrain 242' MSL, 200' prior to threshold, 816' left of course.

USAF Only: When VGSI inop, straight in Rwy 4L authorized at night with MAJCOM A3 approval.

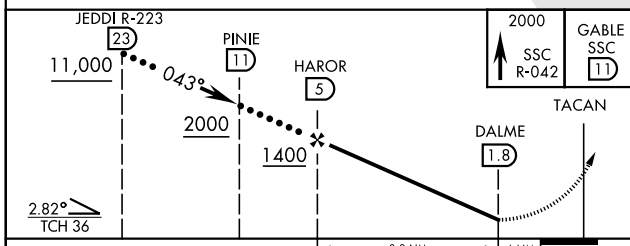
1400

2047

CAUTION: When Rwy 22L VGSI inop, circling to Rwy 22L NA at night. Terrain 239' MSL, 200' prior to threshold, 200' right of course.

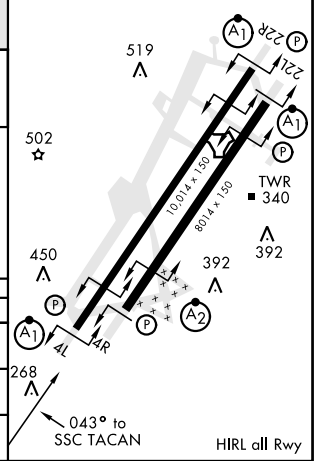


EMERG SAFE ALT 100 NM 3800



ELEV 241	TDZE 4L 240
	TDZE 4R 236

CATEGORY	C	D	E
S-4L *	800/60	560 (600-1 1/8)	
SIDESTEP 4R *	800-1 3/8	564 (600-1 3/8)	
CIRCLING	1000-2 1/4 759 (800-2 1/4)	1000-2 1/2 759 (800-2 1/2)	1000-2 3/4 759 (800-2 3/4)



SUMTER, SOUTH CAROLINA

33° 58' N-80° 28' W

SHAW AFB (KSSC)

Amdt 1 10OCT19

HI-TACAN Z RWY 4L

SE-2, 10 OCT 2019 to 07 NOV 2019

SE-2, 10 OCT 2019 to 07 NOV 2019