

LOC/DME I-SLE 110.3 Chan 40	APP CRS 313°	Rwy Idg 5811	TDZE 214	Apt Elev 214
--	------------------------	------------------------	--------------------	------------------------

LOC Y RWY 31

MCNARY FIELD (SLE)

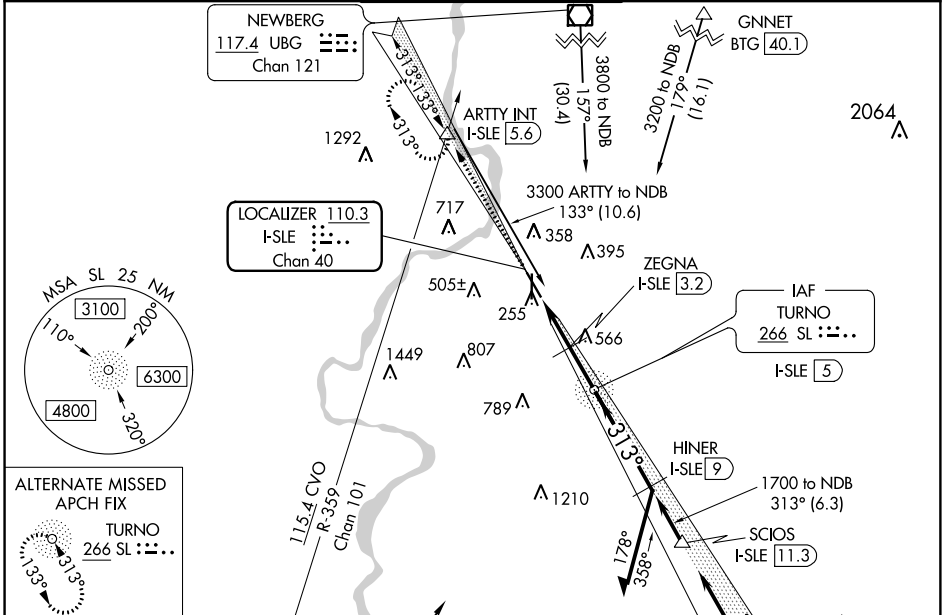
DME required. RADAR required.

When local altimeter setting not received, use Mc Minnville altimeter setting; increase all MDA 60 feet; increase S-LOC 31 Cat C and D visibility to 1 1/2 SM, Circling Cat C visibility to 2 1/2 SM. For inop ALS, increase S-LOC 31 Cats C and D visibility to 1 1/2 SM. For inop ALS when using Mc Minnville altimeter setting, increase S-LOC 31 Cats C and D visibility to 1 3/4 SM. VDP NA when using Mc Minnville altimeter setting.

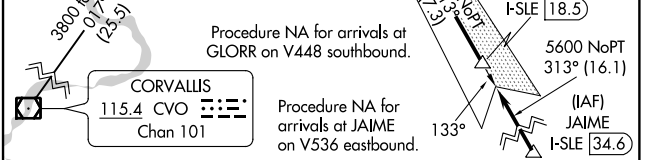
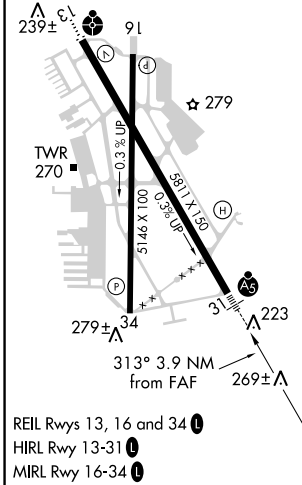
MALSRS

MISSED APPROACH: Climb to 4000 on I-SLE Localizer NW course to ARTTY INT/ I-SLE 5.6 DME and hold, continue climb-in-hold to 4000.

ATIS 124.55	SEATTLE CENTER 125.8 291.7	SALEM TOWER ★ 119.1 (CTAF) 0 257.2	GND CON 121.9	UNICOM 122.95
-----------------------	--------------------------------------	--	-------------------------	-------------------------



ELEV 214	TDZE 214
----------	----------



CATEGORY	A	B	C	D
S-LOC 31	780/24	566 (600-1/2)	780-1 1/4	566 (600-1 1/4)
CIRCLING	900-1 686 (700-1)	960-1 746 (800-1)	1060-2 1/2 846 (900-2 1/2)	1260-3 1046 (1100-3)

NW-1, 10 OCT 2019 to 07 NOV 2019

NW-1, 10 OCT 2019 to 07 NOV 2019